

XLR Adapter ASD

XLR Adapter ASD-2

for XL2 Analyzer



XLR male/female Adapter with electronic data sheet for automated sensor detection (ASD) of other sensors. The adapter is available in two variations: The type ASD-2 is used for measurement microphones with isolated housing ground connection and the type ASD for induction loop and other sensors.

The Automated Sensor Detection (ASD) of the XL2 Analyzer automatically reads the electronic data sheet of this adapter, i.e. the adapter model, the sensor serial number and calibration data. This promotes faster setup and ensures accurate measurements. The information of the electronic data sheet is documented in every XL2 measurement report.

Application example

The XLR Adapter ASD stores the sensitivity of induction loop sensors in the installed electronic data sheet. The XL2 reads this information, is immediately ready for accurate measurements and documents this sensitivity data in the reports.

Specifications

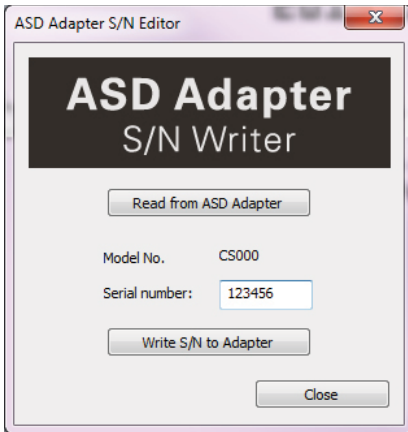
Output / Input	XLR / XLR
XLR Adapter ASD	non-isolated housing ground connection for induction loop and other sensors
XLR Adapter ASD-2	isolated housing ground connection for measurement microphones
Weight	60 g, 2.1 oz
Dimensions	<ul style="list-style-type: none"> • Length x Diameter: 74 x 20 mm (2.9" x 0.8") • Extends sensor by 60 mm (2.4")
Order Information	<ul style="list-style-type: none"> • XLR Adapter ASD NTi Audio # 600 000 383 • XLR Adapter ASD-2 NTi Audio # 600 000 385

Prior First Use

Serial Number Setting

Store the serial number of your connected sensor in the electronic data sheet of the adapter.

- Connect the XL2 to the computer and start the XL2 Projector PRO software V1.53 or higher. You will see the XL2 screen live on the PC monitor. The latest XL2 Projector PRO software is available for download at <http://my.nti-audio.com/support/xl2>.
- Press F4 on the keyboard to open the ASD Adapter S/N Writer.
- Click **Read from ASD Adapter**.
- Enter the sensor serial number.
- Click **Write S/N to Adapter**.


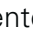




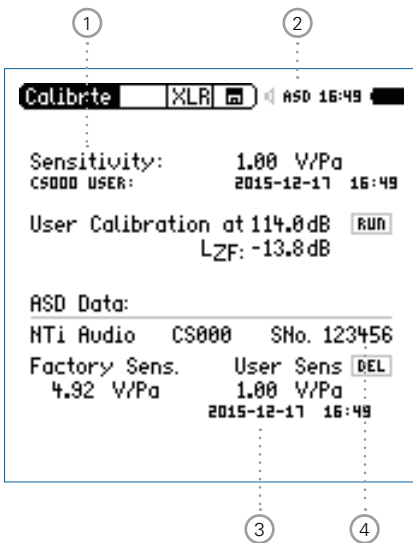
XL2 Projector PRO
Serial Number Setting

In case you use multiple custom sensors, then we suggest utilizing an individual adapter for each sensor. This saves time and simplifies your operation.

User Calibration



Set the sensitivity according to the sensor specifications:

- Connect the adapter to the XL2.
- Power on the XL2 and select **Calibrte** in the main menu. The ASD indication ② will be shown. In case ASD is not shown, then select the measurement function **SLMeter** shortly and afterwards **Calibrte** again. The XL2 reads the sensor data at start up and change of measurement function.
- Select **Sensitivity** ① with the rotary wheel .
- Press enter  and adjust the sensitivity with the rotary wheel  in 0.1 mV/Pa steps. The setting range 1 µV/Pa - 9.99 V/Pa is supported.
- Confirm with enter .



👉 The configuration is completed. The serial number ③ and sensitivity ④ are stored in the electronic data sheet.

DISTRIBUTOR CONTACT:
CALTRON PTE LTD
email: caltron@caltron.sg
www.caltron.sg

	<p>Keep User Calibration The XL2 deletes the user calibration at the serial number setting. Thus always set the serial number first and the user calibration afterwards.</p>
	<p>Dispose the instrument in accordance with the legal environmental regulations in the country.</p>