

ACCESSORIES

LV7290 REMOTE CONTROLLER



- Remote Control of Leader Waveform Monitors or Rasterizers via Ethernet (by connecting to ETHERNET terminal at the rear of the product)
- One remote controller can connect up to 8 units of waveform monitor or rasterizer
- Applicable Models: LV5900(A) / LV5600 / LV5350 / LV5300(A) / LV7600 / LV7300 / LV7390

CABLES



PN: DM2.5HWSC002EA-BJ, Micro BNC Cable

- Converts 12G output of a micro BNC terminal to a normal BNC
- Applicable Model: LT4670-SER04 Sync Generator

PN: LC2186, L-Sync Cable

- Can be connected to two LT4670 units to synchronize the time
- The reference input must be an analog sync signal



PN: LC2185, LTC Cable

- Conversion cable used when combining the changeover LT4448 with the sync generator LT 4670
- Converts the 25-pin D-sub LTC connector into two 26-pin D-sub LTC connectors that can be connected to the PRIMARY and BACKUP connectors of the LT4670, or
- Converted into three XLR connectors for LTC output
- Cable length: 1.5m.
- Applicable Models: LT4670, LT4448



ACCESSORIES

RJ45 SFP (SMALL FORM-FACTOR PLUGGABLE) MODULE

PN: LC2142, SFP RJ45 Module

- Speed: 1000 Mbps
- Connector Type: RJ-45
- Applicable Models: LT4670



PN: LC2148, SFP + Multi-Mode Module

- Transmission Distance: 300m
- Wavelength: 850nm
- Compliant standard: 10GBASE-SR
- Connector Type: LC
- Applicable Models: LV5600-SER05, LV5600-SER06, LV7600-SER05, LV7600-SER06, LT4670-SER03, LT4670-SER04

PN: LC2149, SFP + Single-Mode Module

- Transmission Distance: 10,000m
- Wavelength: 1310nm
- Compliant standard: 10GBASE-LR
- Connector Type: LC
- Applicable Models: LV5600-SER05, LV5600-SER06, LV7600-SER05, LV7600-SER06, LT4670-SER03, LT4670-SER04



PN: LC2151, SFP28 Multi-Mode Module

- Transmission Distance: 300m
- Wavelength: 850nm
- Compliant standard: 25GBASE-SR
- Connector Type: LC
- Applicable Models: LV5600-SER06, LV7600-SER06, LT4670-SER04

PN: LC2152, SFP28 Single-Mode Module

- Transmission Distance: 10,000m
- Wavelength: 1310nm
- Compliant standard: 25GBASE-LR
- Connector Type: LC
- Applicable Models: LV5600-SER06, LV7600-SER06, LT4670-SER04

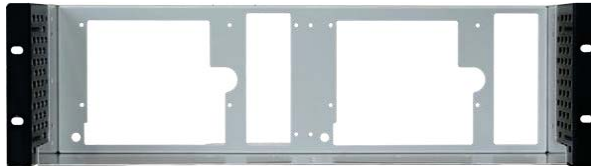


ACCESSORIES

RACK MOUNT ADAPTER / KIT

PN: LR2561, Rack Mount Adapter

- Allows two LV5600 waveform monitors to be mounted side by side or
- One LV5600W and LV5350 or LV5300A to be mounted side by side in an EIA 19-inch rack
- The LV5350 and LV5300A can only be installed on the right side of the LR2561 rack mount adapter
- Applicable Models: LV5600-SER06, LV7600-SER06, LT4670-SER04

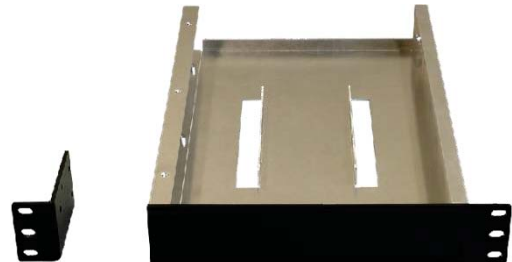


PN: LR2530, Rack Mount Adapter

- Dual rack mount adapter
- Either Two LV5300A or LV5350 can be mounted in an EIA 19-inch rack. Require to specify model when ordering for rack compatibility
- Applicable Models: LV5300A, LV5350

PN: LR2731, Rack Mount Adapter

- For one LV7300 Rasterizer in a 19-inch EIA standard rack
- Applicable Models: LV7300

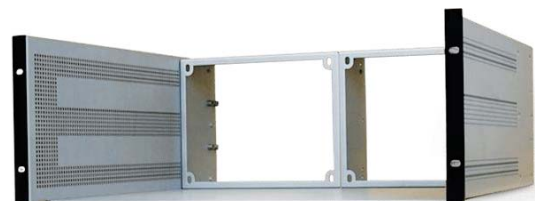


PN: LR27312, Rack Mount Adapter

- Dual rack mount adapter for LV7300 rasterizers in a 19-inch EIA standard rack
- Allow two LV7300 Rasterizers to be installed side by side
- Applicable Models: LV7300

PN: LR2490, Rack Mount Adapter

- Dual rack mount adapter for Leader's 4U half-rack size products in a 19-inch EIA standard rack
- Allow two Leader products to be installed side by side



ACCESSORIES

RACK MOUNT ADAPTER / KIT



PN: LR2478, Rack Mount Adapter

- Dual rack mount adapter for Leader's 1U half-rack size products in a 19-inch EIA standard rack
- Allow two Leader products to be installed side by side

PN: LR2481, Rack Mount Adapter

- Rack mount adapter for Leader's 1U half-rack size product in a 19-inch EIA standard rack
- One side of rack mount adapter is a blank panel



PN: LC2566, Blank Panel

- Blank panel for LR2561 rack mount adapter
- Use it when installing a single LV5600 waveform monitor in the LR2561

PN: LC2535, Blank Panel

- Blank panel for LR2530 rack mount adapter.
- Use it when installing a single LV5300A or LV5350 waveform monitor in the LR2530



PN: LC2190, Blank Panel

- Blank panel for LR2490 rack mount adapter
- Use it when installing a single Leader measuring instrument in the LR2490

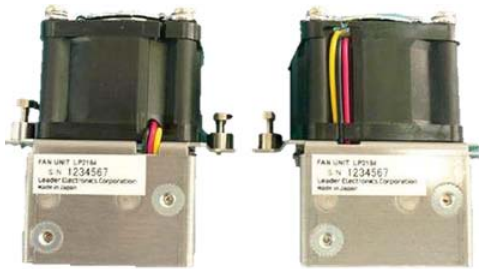
ACCESSORIES

OTHERS

PN: GST90A12, AC Adapter

- Connector Type: 4-pin XLR-Female
- Input: 100 to 240 VAC, 50/60 Hz
- Output: 12 VDC, 6.67A max.
- Dimensions: 60 (W) × 32 (H) × 145 (D) mm (without cord)
- Weight: 0.45 kg (without cord)
- Accessories: Power cord × 1
- Applicable model: LV5300A / LV5350 / LV7300 * / LV5300 / LV5333 / LV5838 / LV5837 / LV5380 / LV5330 / LV5381 / LV5382 / LV5750 / LV7330 / LT4600 / LT4400

* GST90A12 is included with LV7300



PN: LP2184, Fan Unit

- Set of front and rear replacement ventilation fans for LT4670 sync generator