

FLUORESCENCE MICROSCOPES

- 1. BS-2036F(LED) Fluorescence Biological Microscope 2
- 2. BS-2036F2(LED) LED Fluorescence Biological Microscope 4
- 3. BS-2044FB Fluorescence Biological Microscope 7
- 4. BS-2044F(LED) LED Fluorescence Biological Microscope 11
- 5. BS-2063F(LED) LED Fluorescence Microscope 17
- 6. BS-2063F2(LED) LED Fluorescence Microscope 23
- 7. BS-2080F(LED) Fluorescence Biological Microscope 29
- 8. BS-3060F Fluorescence Stereo Microscope 31
- 9. BS-7000A Upright Fluorescence Microscope 33
- 10. BS-7000B Inverted Fluorescence Microscope 37

1. BS-2036F(LED) Fluorescence Biological Microscope



BS-2036FB(LED)



BS-2036FT(LED)

Introduction

BS-2036F(LED) Series LED fluorescence microscopes are newly developed microscopes, the microscopes use LED as the light source, the life span of the LED lamp is much longer than mercury lamp, the performance is also better. It has 6 turret positions for filter cubes, more filter cubes can be used without change the blocks.

Features

1. Excellent fluorescence image with infinite optical system.
2. LED illumination with 50,000 hours life span.
3. Convenient to use, no need warm-up.
4. No need for cooling due to LED cold light source.
5. 6 positions for filter cubes.

Application

BS-2036F(LED) series LED Fluorescence microscopes are used to study the absorbing, transportation, chemicals distribution and positioning in cells. They are widely used in disease examination, immune diagnosis and life science areas.

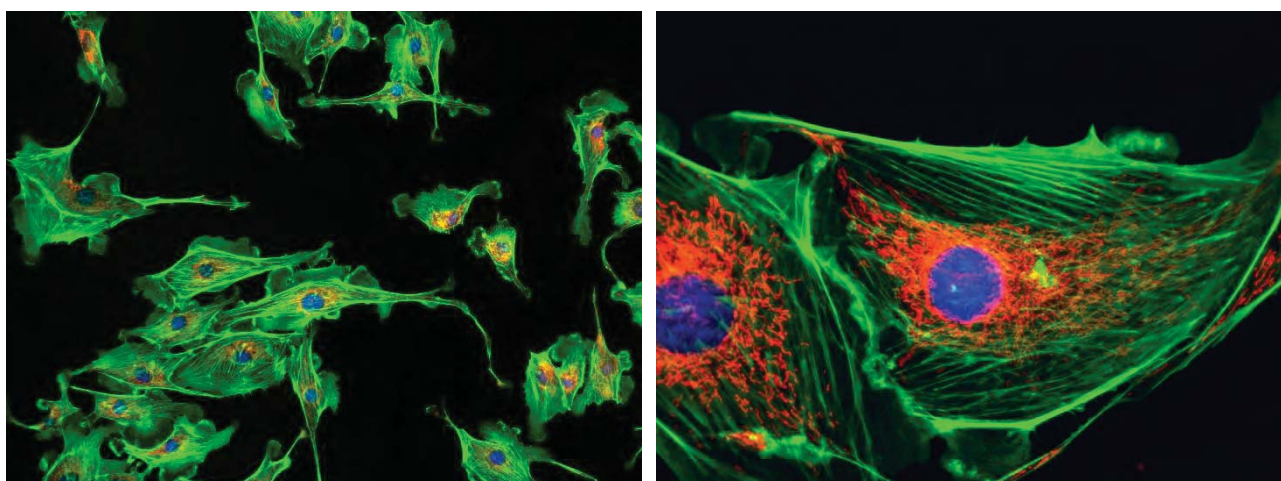
Specifications

Item	Specification	BS-2036 FB(LED)	BS-2036 FT(LED)
Optical System	Infinite Optical System	•	•
Viewing Head	Seidentopf Binocular Viewing Head, Inclined at 30°, 360° Rotatable, Interpupillary 50-75mm	•	
	Seidentopf Trinocular Viewing Head, Inclined at 30°, 360° Rotatable, Interpupillary 50-75mm		•
	Seidentopf Binocular/Trinocular Viewing Head, Inclined at 30°, 360° Rotatable,	○	○

	Interpupillary 48-75mm					
Eyepiece	WF10×/20mm	●	●			
	WF16×/13mm	○	○			
	Reticule Eyepiece WF10×/20mm (0.1mm)	○	○			
Objective	Infinite E-Plan Achromatic Objective 4×, 10×, 40×, 100×(Oil)	●	●			
	Infinite Plan Achromatic Objective 4×, 10×, 20×, 40× (S), 60× (S), 100× (Oil) (S)	○	○			
Nosepiece	Backward Quadruple Nosepiece	●	●			
	Backward Quintuple Nosepiece	○	○			
Focusing	Coaxial Coarse & Fine Focusing knobs, Travel Range: 26mm, Scale:2um	●	●			
Stage	Stage Size: 145×140mm, Cross Travel 76×52mm, Two Slide Holder	●	●			
	Rackless Double Layers Mechanical Stage, Size: 182×140mm, Cross Travel 77×33mm, Two Slide Holder	○	○			
Condenser	Abbe Condenser NA1.25 with Iris Diaphragm	●	●			
Transmitted Illumination	12V/20W Halogen Lamp, Brightness Adjustable	●	●			
	12V/30W Halogen Lamp, Brightness Adjustable	○	○			
	3W-LED Illumination Systems (non-rechargeable), Brightness Adjustable	○	○			
	0.3W-LED Illumination Systems (Rechargeable), Brightness Adjustable	○	○			
Optional Accessories	Field Diaphragm, Photo adapters(for DSLR cameras), Video adapters(1X, 0.5X), Polarization set, Phase contrast kit, filters, mirror, Cable Winding Device	○	○			
Reflected Light Source		Excitation	Dichroic Mirror	Barrier Filter		
	Blue excitation	420-490	505	520	●	●
	Green excitation	500-550	575	590	●	●
	Ultraviolet Excitation	330-380	400	435	○	○
	Violet Excitation	380-420	430	460	○	○
Fluorescent Lamp	3W LED Lamp	●	●			
Package	42cm*28cm*45cm, 40cm*20cm*40cm, 12kg	●	●			

Note: ●Standard Outfit, ○Optional

Sample Images



2. BS-2036F2 (LED) Fluorescence Biological Microscope



BS-2036F2B (LED)



BS-2036F2T (LED)

Introduction

BS-2036F2(LED) Series LED fluorescence microscopes are newly developed microscopes, the microscopes use LED as the light source, the life span of the LED lamp is much longer than mercury lamp, the performance is also better. It has 2 positions for filter cubes, the fluorescence light source can be automatically changed after you change the fluorescence filter.

Features

1. Excellent fluorescence image with infinite optical system.
2. LED illumination with 50,000 hours life span.
3. Convenient to use, no need warm-up.
4. No need for cooling due to LED cold light source.
5. 2 positions for filter cubes, compact and take small space.

Application

BS-2036F2(LED) series LED Fluorescence microscopes are used to study the absorbing, transportation, chemicals distribution and positioning in cells. They are widely used in disease examination, immune diagnosis and life science areas in Medical colleges, universities, hospitals and clinics.

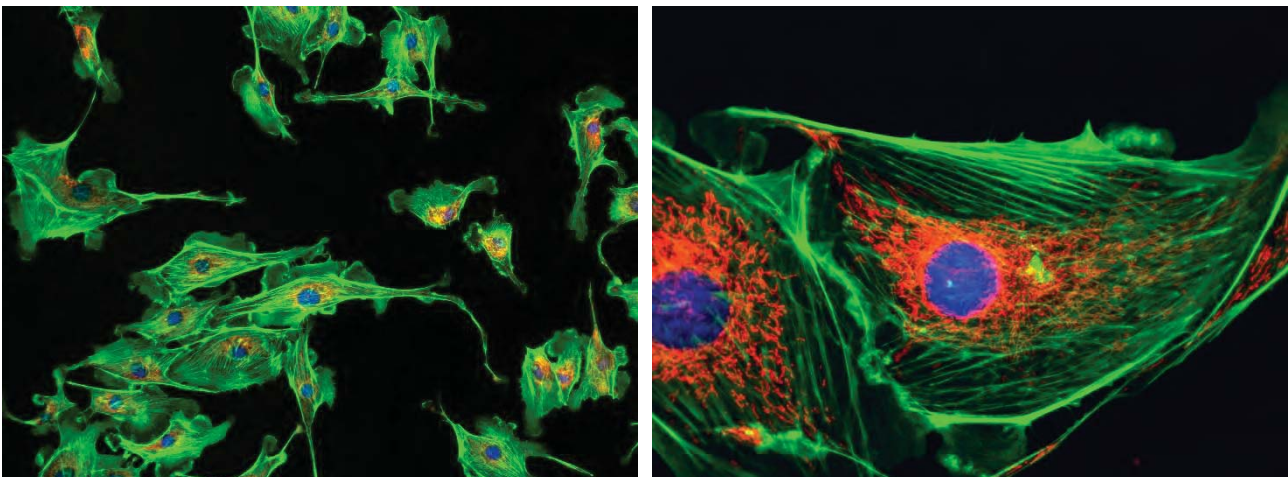
Specifications

Item	Specification	BS-2036 F2B(LED)	BS-2036 F2T(LED)
Optical System	Infinite Optical System	•	•
Viewing Head	Seidentopf Binocular Viewing Head, Inclined at 30°, 360° Rotatable, Interpupillary 48-75mm	•	
	Seidentopf Trinocular Viewing Head, Inclined at 30°, 360° Rotatable, Interpupillary 48-75mm, Light Distribution 20:80		•

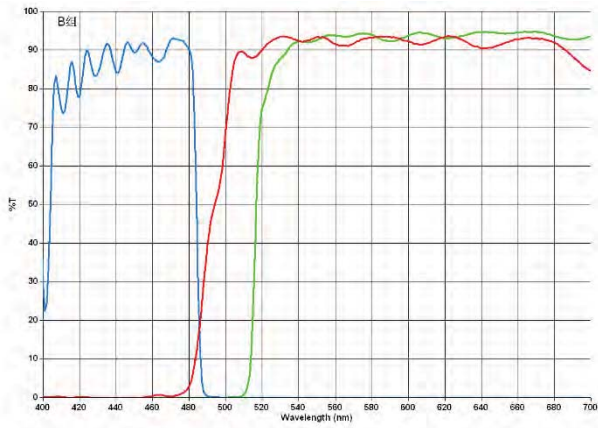
Eyepiece	WF10×/20mm				●	●
	WF16×/13mm				○	○
	Reticule Eyepiece WF10×/20mm (0.1mm)				○	○
Objective	Infinite Plan Achromatic Objective 4×, 10×, 40×, 100×(Oil)				●	●
	Infinite Plan Achromatic Objective 20×, 60× (S), 100× (Dry, S)				○	○
	Infinite UPlan fluorescence objective 10×, 20×, 40×, 100×				○	○
Nosepiece	Backward Quadruple Nosepiece				●	●
	Backward Quintuple Nosepiece				○	○
Focusing	Coaxial Coarse & Fine Focusing knobs, Travel Range: 26mm, Scale:2um				●	●
Stage	Stage Size: 145×140mm, Cross Travel 76×52mm, Scale0.1mm, Two Slide Holder				●	●
	Rackless Double Layers Mechanical Stage, Size: 140×135mm, Cross Travel 75×35mm, Scale0.1mm, Two Slide Holder				○	○
Condenser	Abbe Condenser NA1.25 with Iris Diaphragm				●	●
Transmitted Illumination	3W-LED Illumination, Brightness Adjustable				●	●
	12V/20W Halogen Lamp, Brightness Adjustable				○	○
	12V/30W Halogen Lamp, Brightness Adjustable				○	○
Fluorescence Attachment	Epi fluorescence unit (2 positions for Uv /V/B/G fluorescence filters), 5W-LED fluorescence lamp				●	●
Fluorescence filters		Excitation	Dichroic Mirror	Barrier Filter		
	Blue excitation	420-490	505	520	●	●
	Green excitation	500-550	575	590	●	●
	Ultraviolet Excitation	330-380	400	435	○	○
	Violet Excitation	380-420	430	460	○	○
Filter	Blue /Green /Yellow				○	○
Optional Accessories	Field Diaphragm, Photo adapters(for DSLR cameras), Video adapters(1X, 0.5X), Polarization set, Phase contrast kit, mirror, Cable Winding Device				○	○
Package	42cm*28cm*45cm, 40cm*20cm*40cm, 12kg				●	●

Note: ●Standard Outfit, ○Optional

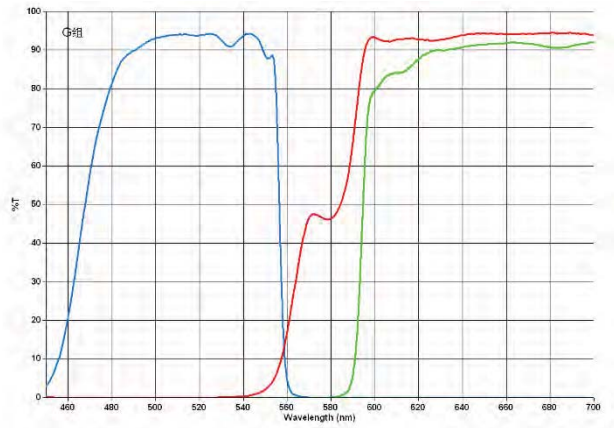
Sample Images



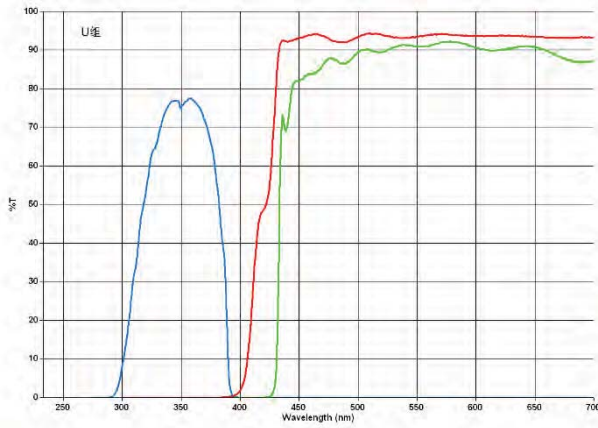
Fluorescence Filters



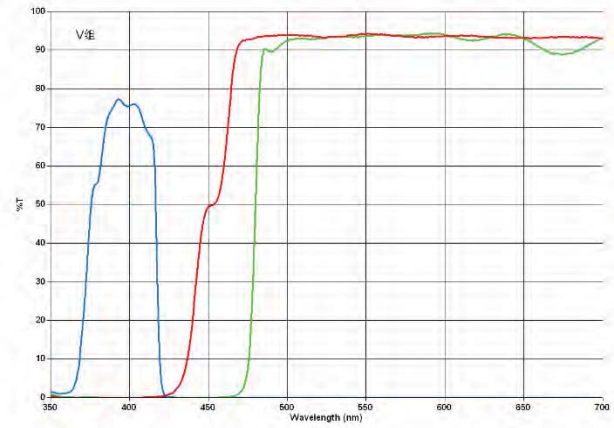
Blue



Green



UV



V

3. BS-2044FB Fluorescence Microscope



BS-2044FB

Introduction

BS-2044FB microscope is a high quality fluorescence microscopes, which are specially designed for biological and medical research and teaching experiments for colleges, universities, laboratories and related institutes. With infinity color correction optical system and excellent Koehler illumination system, BS-2044FB can get uniform illumination, clear and bright images at any magnification. These microscopes can be used for teaching experiments, pathological examinations and clinical diagnosis. With outstanding functions, excellent cost performance, easy and comfortable operation, BS-2044FB fluorescence microscope presents over expected and splendid micro images.

Feature

1. Infinite Color Corrected Optical System provides sharp and comfortable images.
2. Wide-field high eye-point eyepieces and plan achromatic objectives make the effect of fluorescence observation more perfect.
3. Outstanding appearance design and ergonomics structure design, long time use without feeling tired.
4. With the design of security lock and safe limits, it is much more secure, stable and can be kept for long.
5. Various microscopic examinations can be fulfilled, such as brightfield, dark-field, phase contrast, fluorescence, simple polarizing and so on.
6. LED fluorescence excitation illumination, breaking through the traditional type, is more stable, low radiation and long working life. Special fluorescence filters for tuberculosis examination is available.

Application

BS-2044FB fluorescence microscope is ideal instruments for biological, pathological, histological, bacterial, immune, pharmacological and genetic fields. They can be widely used in education, medical and research.

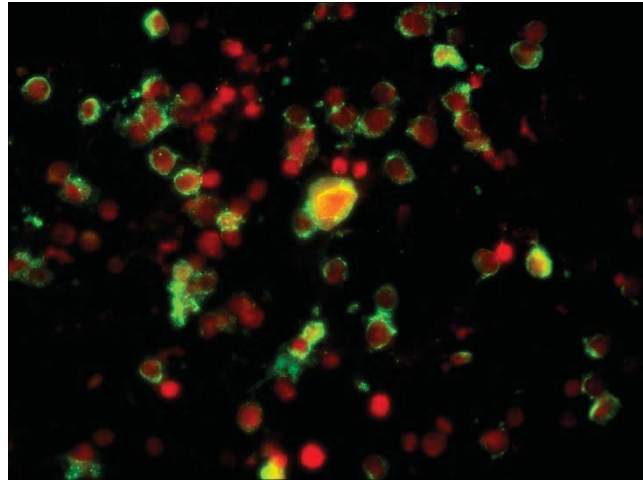
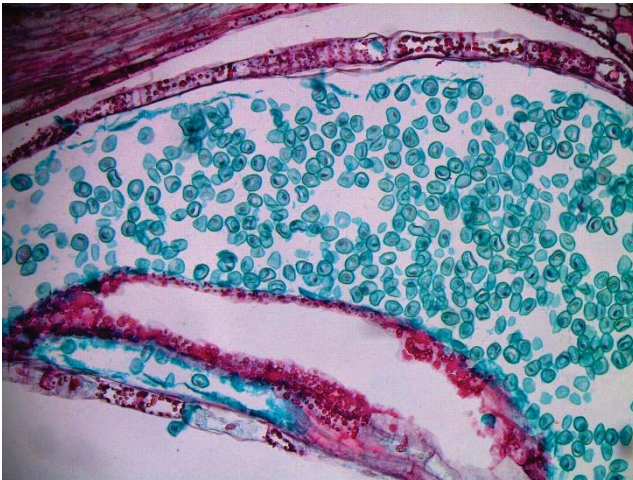
Specification

Item	Specification	BS-2044FB	BS-2044FT	
Optical System	Infinite Color Corrected Optical System, parfocal distance 45mm	●	●	
Viewing Head	Seidentopf binocular head, 30° inclined, Interpupillary 50-75mm, 360° rotatable, eyepiece tube: Φ30mm	●	○	
	Seidentopf trinocular head, 30° inclined, Interpupillary 50-75mm, 360° rotatable, Fixed light splitting ratio: Eyepiece:Trinocular=8:2, eyepiece tube: Φ30mm	○	○	
	Seidentopf trinocular head(dedicated for fluorescence), 30° inclined, Interpupillary 50-75mm, 360° rotatable, Fixed light splitting ratio: Eyepiece:Trinocular=5:5, eyepiece tube: Φ30mm	○	●	
Eyepiece	High eyepoint wide field plan eyepiece PL 10×/22mm with adjustable diopter ±5	●	●	
	High eyepoint wide field plan eyepiece PL 10×/22mm with adjustable diopter ±5, with eyepiece micrometer	○	○	
	Eyepiece pointer	○	○	
	Eyepiece micrometer	○	○	
Objective	Infinite Plan Achromatic Objectives	4×, NA=0.10, WD=11.9mm	●	●
		10×, NA=0.25, WD=12.1mm	●	●
		20×, NA=0.45, WD=1.5mm	○	○
		40×(S), NA=0.65, WD=0.36mm	●	●
		60×(S), NA=0.85, WD=0.3mm	○	○
		100×(S, Oil), NA=1.25, WD=0.18mm	●	●
	Infinite Plan Phase Contrast Objective	10×, NA=0.25, WD=12.1mm	○	○
		20×, NA=0.45, WD=1.5mm	○	○
		40×(S), NA=0.65, WD=0.36mm	○	○
		100×(S, Oil), NA=1.25, WD=0.18mm	○	○
	Infinite Plan Semi-Apochromatic Fluorescence Objectives	4×, NA=0.13, WD=18.5mm	○	○
		10×, NA=0.30, WD=10.6mm	○	○
		20×, NA=0.50, WD=2.33mm	○	○
		40×(S), NA=0.75, WD=0.6mm	○	○
		100×(S, Oil), NA=1.28, WD=0.21mm	○	○
Nosepiece	Reversed Quadruple Nosepiece	●	●	
	Reversed Quintuple Nosepiece	○	○	
Stage	Double Layers Mechanical Stage 150mm×140mm, moving range 76mm×50mm, double slide holder, accuracy: 0.1mm	●	●	
	Rackless Double Layers Mechanical Stage 150mm×162mm, moving range 76mm×50mm, double slide holder, accuracy: 0.1mm, Wear-resistant and anti-corrosion treatment on the stage surface	○	○	
Condenser	N.A.1.25 Koehler illumination condenser (with plug-in phase contrast and dark field plate slot), condenser preset center and height adjustable	●	●	
Focusing	Low position coaxial focusing system, moving range 30mm, with upper limit and tightness adjustment, fine division 0.002mm	●	●	
Transmitted	Adaptive 100V-240V, AC50/60Hz wide range voltage, single high brightness 3W	●	●	

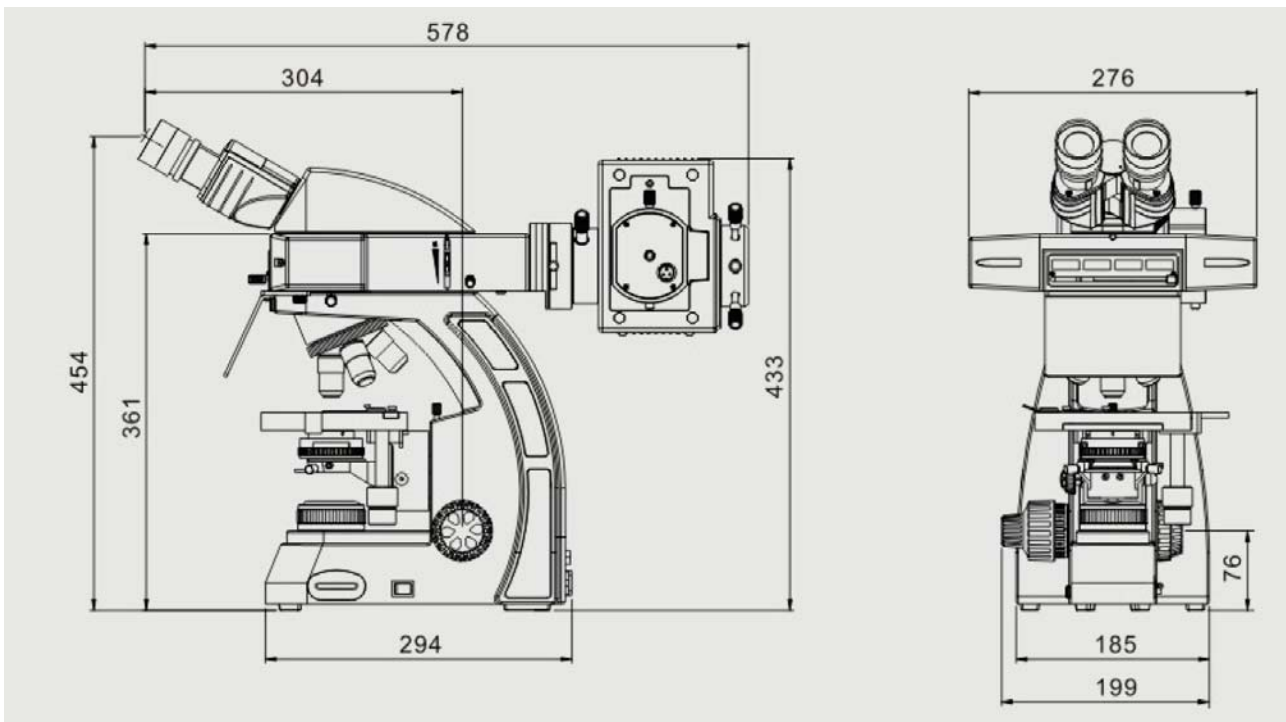
Illumination	LED (preset center), light intensity can be continuously adjusted		
Mercury Reflected Illumination	Mercury reflected fluorescence illuminator, 100W mercury lamp house, 100W DC mercury bulb (OSRAM/ Chinese brand)	●	●
LED Fluorescence Reflected Illumination	B1 band-pass type fluorescence module, with intensity adjusting knob, and switch knob for bright field and fluorescence, central wavelength:470nm	○	○
	G1 band-pass type LED fluorescence module, with intensity adjusting knob, and switch knob for bright field and fluorescence, central wavelength: 560nm	○	○
	B4 LED fluorescence module dedicated for TB, with intensity adjusting knob, and switch knob for bright field and fluorescence, central wavelength: 455nm	○	○
	UV2 ultraviolet long-pass type LED module, with intensity adjusting knob, and switch knob for bright field and fluorescence, central wavelength: 365nm	○	○
	Other various LED module for option, which can be custom-tailor according to the needs of clinical diagnosis.	○	○
Filters	Blue filter Φ45mm	○	○
	Green filter Φ45mm	○	○
	Yellow filter Φ45mm	○	○
	Neutral filter Φ45mm	○	○
Polarizing Kit	Polarizer	○	○
	Analyzer	○	○
Dark Field Plate	Dark field insert plate (used for 4x-40x objectives)	○	○
Centering Telescope	Centering TelescopeΦ23.2mm (used with phase contrast plate and objective)	○	○
Phase Contact Plate	10x, 40x Phase Contact Insert Plate (used for 10x, 40x phase contrast objectives)	○	○
	20x, 100x Phase Contact Insert Plate (used for 20x, 100x phase contrast objectives)	○	○
C-mount Adapter	0.35x C-mount adapter, adjustable	○	○
	0.5x C-mount adapter, adjustable	○	○
	1x C-mount adapter, adjustable	○	○
	Trinocular tube for digital eyepiece (Φ23.2mm)	○	○
Packing	2 cartons/set, 58x56x28cm, GW: 10kgs, NW: 8kgs; 51x31x49cm, GW: 11kgs, NW: 9kgs	●	●

Note: ● Standard Outfit, ○ Optional

Sample Images



Dimension



Unit:mm

4. BS-2044F(LED) LED Fluorescence Microscope



BS-2044FB(LED)



BS-2044FT(LED)

Introduction

BS-2044FB(LED) LED fluorescence microscope is a high quality microscope that is specially designed for biological, medical research and teaching for colleges, universities and laboratories.

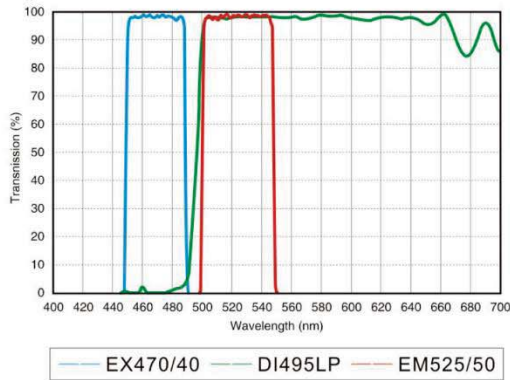
With infinity color correction optical system and excellent Koehler illumination system, BS-2044FB(LED) microscope can get uniform illumination, clear and bright images at any magnification. These microscopes can be used for clinical and pathological examinations. With outstanding functions, excellent cost performance and ease-of-use operations, BS-2044FB(LED) microscope presents over excellent micro images.

BS-2044F(LED) with B4 LED fluorescence module can be used for diagnosis of tuberculosis (TB)

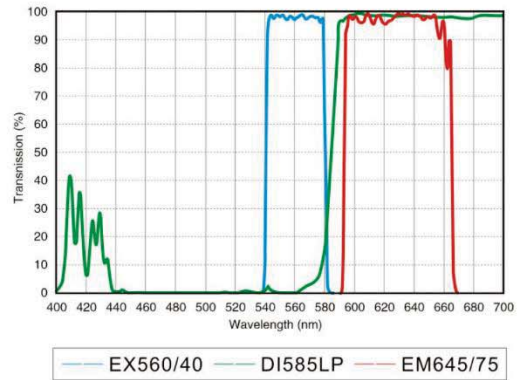
Feature

1. Infinite Color Corrected Optical System provides sharp and comfortable images.
2. Wide-field high eye-point eyepieces and plan achromatic objectives and semi-APO fluorescence objectives make the effect of fluorescence observation more perfect.
3. Outstanding appearance design and ergonomics structure design, long time use without feeling tired.
4. With the design of security lock and safe limits, it is much more secure, stable and can be kept for long.
5. Various microscopic examinations can be fulfilled, such as brightfield, dark-field, phase contrast, fluorescence, simple polarizing and so on.
6. LED fluorescence excitation illumination, breaking through the traditional type, is more stable, low radiation and long working life. Special fluorescence filter(B4) for tuberculosis examination is available. Except for TB test module B4, you could select B1, G1, UV2 fluorescence modules according to different applications. You can also choose several modules and replace them when you need.

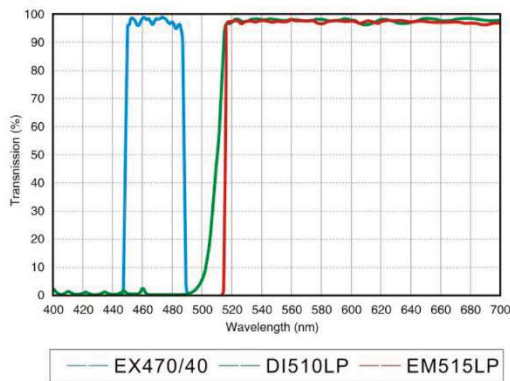
B1: EGFP/GFP/FITC /Alexa Fluor@488
Cy2@/DIO/Fluo-4



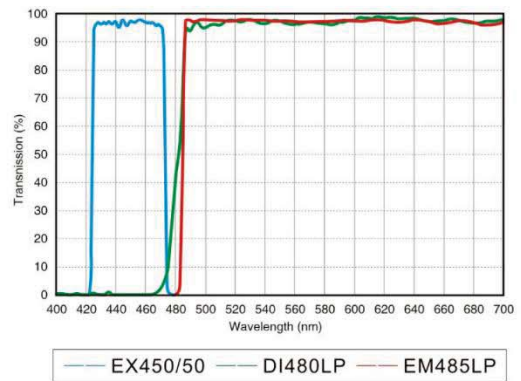
G1: TexasRED@/TexasRed@-X/Cy3.5
Mito Tracker@ Red



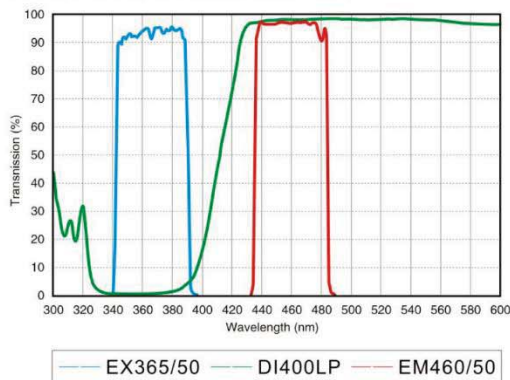
B2: EGFP/GFP/FITC /Alexa Fluor@488
Cy2@/DIO/Fluo-4



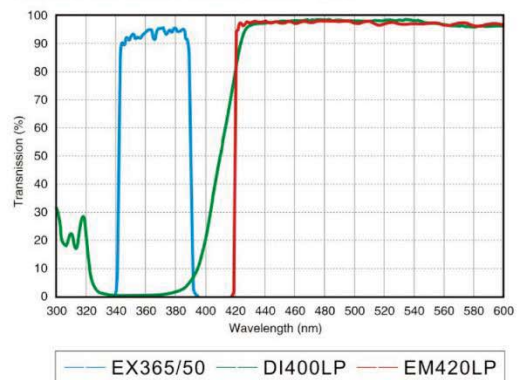
B4: Auramine O/wtGFP



UV1: DAPI/Hoechst 33342/33258 AMCA/
AMCA-X Blue/ Alexa Fluor® 350



UV2: DAPI/Hoechst 33342/33258 AMCA/
AMCA-X Blue/ Alexa Fluor® 350



7. The Single-band LED fluorescence attachment have light intensity control function, with 6V/2A DC power supply, external transformer, easy connection and safe use. There is a switch and easy to change from fluorescence observation to bright field observation with transmitted illumination.



8. Semi-APO fluorescence objectives are optional. These objectives have large numerical aperture, provide high-resolution, high contrast microscopic images. We also can provide objectives without cover slip corrections, which is used to observe smear slides.



Infinite Plan Semi-APO fluorescence objectives without cover slip corrections



Infinite Plan Semi-APO fluorescence objectives with 0.17mm cover slip corrections

Application

BS-2044FB(LED) fluorescence microscope is ideal instrument for biological, pathological, histological, bacterial,

immune, pharmacological and genetic fields. They can be widely used in education, medical and sanitary establishments, such as schools, hospitals, clinics, laboratories, medical academies, colleges, universities and related teaching labs and research centers.

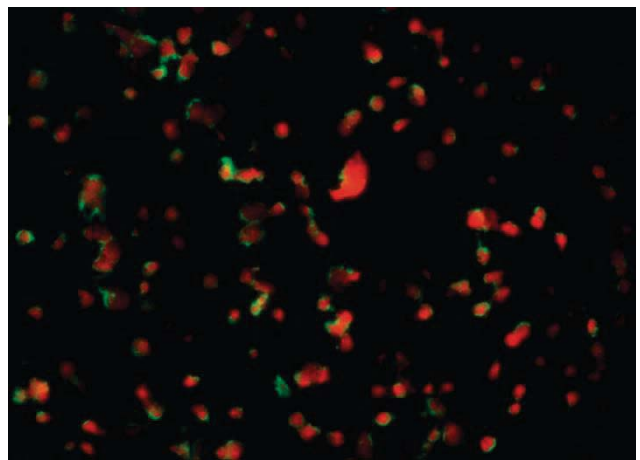
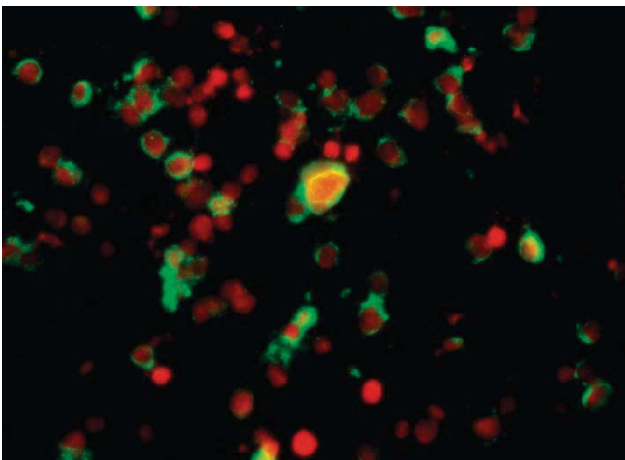
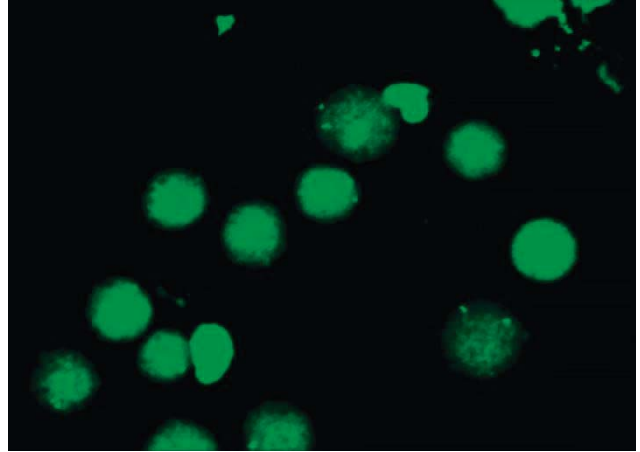
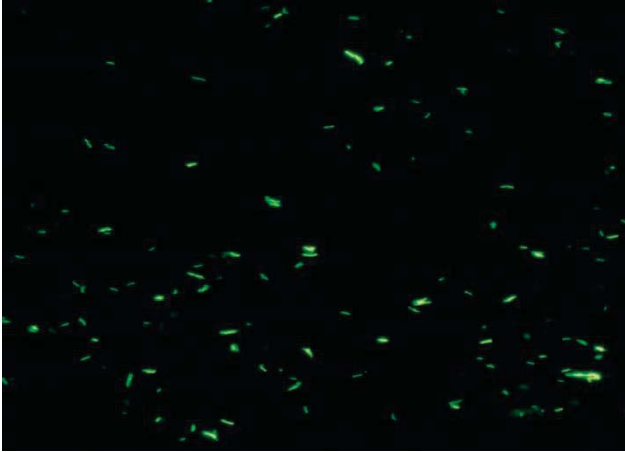
Specification

Item	Specification	BS-2044FB (LED)	BS-2044FT (LED)	
Optical System	Infinite Color Corrected Optical System, parfocal distance 45mm	●	●	
Viewing Head	Seidentopf binocular head, 30° inclined, Interpupillary 50-75mm, 360° rotatable, eyepiece tube: Φ30mm	●	○	
	Seidentopf trinocular head, 30° inclined, Interpupillary 50-75mm, 360° rotatable, Fixed light splitting ratio: Eyepiece:Trinocular=8:2, eyepiece tube: Φ30mm	○	○	
	Seidentopf trinocular head(dedicated for fluorescence), 30° inclined, Interpupillary 50-75mm, 360° rotatable, Fixed light splitting ratio: Eyepiece:Trinocular=5:5, eyepiece tube: Φ30mm	○	●	
Eyepiece	High eyepoint wide field plan eyepiece PL 10×/22mm with adjustable diopter ±5	●	●	
	High eyepoint wide field plan eyepiece PL 10×/22mm with adjustable diopter ±5, with eyepiece micrometer	○	○	
	Eyepiece pointer	○	○	
	Eyepiece micrometer	○	○	
Objective	Infinite Plan Achromatic Objectives	4×, NA=0.10, WD=11.9mm	●	●
		10×, NA=0.25, WD=12.1mm	●	●
		20×, NA=0.45, WD=1.5mm	○	○
		40×(S), NA=0.65, WD=0.36mm	●	●
		60×(S), NA=0.85, WD=0.3mm	○	○
		100×(S, Oil), NA=1.25, WD=0.18mm	●	●
	Infinite Plan Phase Contrast Objective	10×, NA=0.25, WD=12.1mm	○	○
		20×, NA=0.45, WD=1.5mm	○	○
		40×(S), NA=0.65, WD=0.36mm	○	○
		100×(S, Oil), NA=1.25, WD=0.18mm	○	○
	Infinite Plan Semi-Apochromatic Fluorescence Objectives	4×, NA=0.13, WD=18.5mm	○	○
		10×, NA=0.30, WD=10.6mm	○	○
		20×, NA=0.50, WD=2.33mm	○	○
		40×(S), NA=0.75, WD=0.6mm	○	○
		100×(S, Oil), NA=1.28, WD=0.21mm	○	○
Nosepiece	Reversed Quadruple Nosepiece	●	●	
	Reversed Quintuple Nosepiece	○	○	
Stage	Double Layers Mechanical Stage 150mm×140mm, moving range 76mm×50mm, double slide holder, accuracy: 0.1mm	●	●	
	Rackless Double Layers Mechanical Stage 150mm×162mm, moving range	○	○	

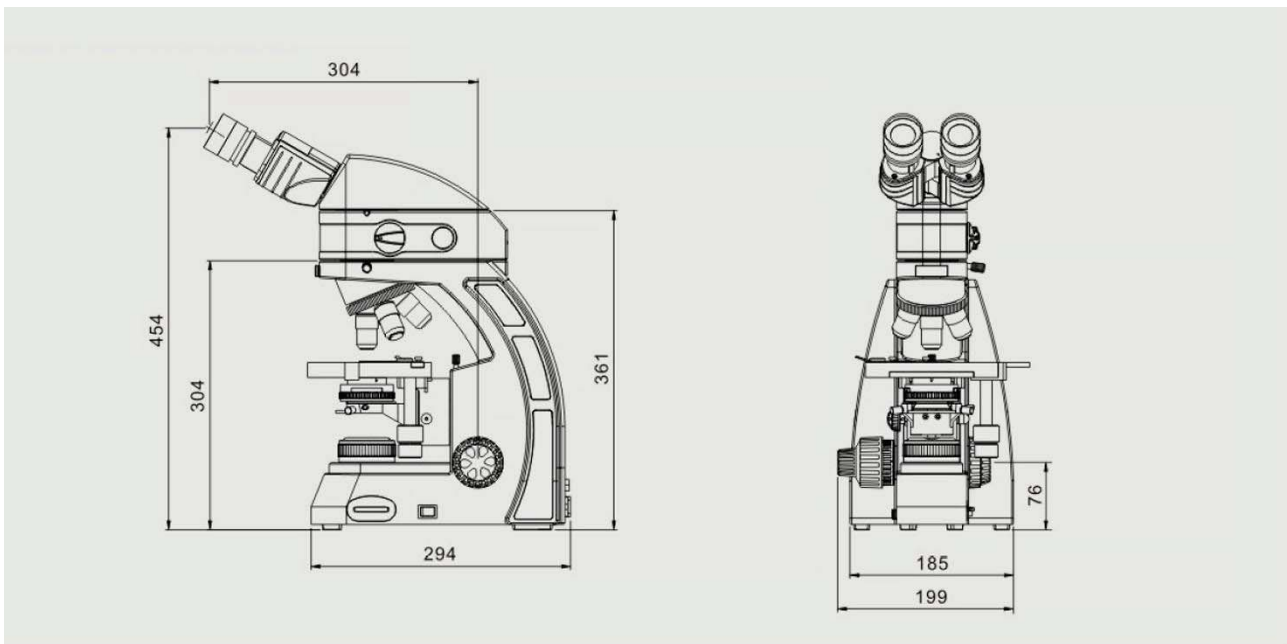
	76mm×50mm, double slide holder, accuracy: 0.1mm, Wear-resistant and anti-corrosion treatment on the stage surface		
Condenser	N.A.1.25 Koehler illumination condenser (with plug-in phase contrast and dark field plate slot), condenser preset center and height adjustable	●	●
Focusing	Low position coaxial focusing system, moving range 30mm, with upper limit and tightness adjustment, fine division 0.002mm	●	●
Transmitted Illumination	Adaptive 100V-240V, AC50/60Hz wide range voltage, single high brightness 3W LED (preset center), light intensity can be continuously adjusted	●	●
Mercury Reflected Illumination	Mercury reflected fluorescence illuminator, 100W mercury lamp house, 100W DC mercury bulb (OSRAM/ Chinese brand), with B1, G1 fluorescence filters	○	○
LED Fluorescence Reflected Illumination	B1 band-pass type fluorescence module, with intensity adjusting knob, and switch knob for bright field and fluorescence, central wavelength:470nm	●	●
	G1 band-pass type LED fluorescence module, with intensity adjusting knob, and switch knob for bright field and fluorescence, central wavelength: 560nm	○	○
	B4 LED fluorescence module dedicated for TB, with intensity adjusting knob, and switch knob for bright field and fluorescence, central wavelength: 455nm	○	○
	UV2 ultraviolet long-pass type LED module, with intensity adjusting knob, and switch knob for bright field and fluorescence, central wavelength: 365nm	○	○
	Other various LED module for option, which can be custom-tailor according to the needs of clinical diagnosis.	○	○
Filters	Blue filter Φ45mm	○	○
	Green filter Φ45mm	○	○
	Yellow filter Φ45mm	○	○
	Neutral filter Φ45mm	○	○
Polarizing Kit	Polarizer	○	○
	Analyzer	○	○
Dark Field Plate	Dark field insert plate (used for 4×-40× objectives)	○	○
Centering Telescope	Centering TelescopeΦ23.2mm (used with phase contrast plate and objective)	○	○
Phase Contact Plate	10×, 40× Phase Contact Insert Plate (used for 10×, 40× phase contrast objectives)	○	○
	20×, 100× Phase Contact Insert Plate (used for 20×, 100× phase contrast objectives)	○	○
C-mount Adapter	0.35× C-mount adapter, adjustable	○	○
	0.5× C-mount adapter, adjustable	○	○
	1× C-mount adapter, adjustable	○	○
	Trinocular tube for digital eyepiece (Φ23.2mm)	○	○
Packing	2 cartons/set, 58x56x28cm, GW: 10kgs, NW: 8kgs; 51x31x49cm, GW: 11kgs, NW: 9kgs	●	●

Note: ● Standard Outfit, ○ Optional

Sample Images



Dimension



Unit:mm

5. BS-2063F LED Fluorescence Microscope



BS-2063FT(LED) with B/G Filter



BS-2063FT(LED) with UV/V/B/G Filter

Introduction

BS-2063F(LED) Series LED Fluorescence Microscope is specifically designed for the daily routine work in the demanding applications of education, pathology investigation, clinical and laboratory usage. Innovative LED as fluorescence illumination source, provide excellent image with easy and comfortable usage experience.

Feature

1. LED fluorescence unit



Six-holes disk fluorescence unit, more fluorescence filters can be supplied.

2. Rackless stage



Rackless wire driven mechanical fixed stage with focus lock is safer than traditional stage.

3. Quintuple turret phase contrast unit



Quintuple turret phase contrast unit with 10X/20X/40X/100X Infinite plan phase contrast objective for phase contrast and bright field observation.

4. Other accessories.



N.A.0.9/0.13 Swing-out Condenser
 Dark field condenser (dry) available to 4X-60X Objective
 Dark field condenser (oil) available to 100X Objective



Infinite Plan Objectives

Specification

Item	Specification	BS-2063FB (LED)	BS-2063FT (LED)
Optical System	Color Corrected Infinite Optical System	•	•
Viewing Head	Inclined 30° binocular tube, 360° rotatable, interpupillary distance: 48-76mm	•	

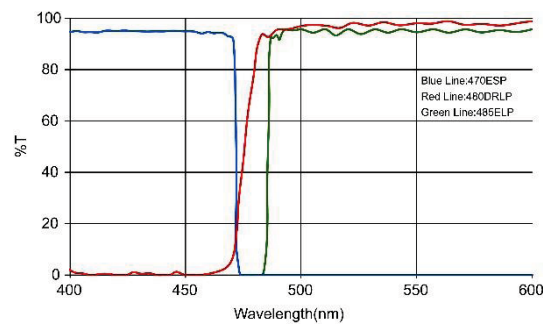
	Inclined 30° trinocular tube, 360° rotatable, interpupillary distance: 48-76mm, splitting ratio: eyepiece: trinocular=100:0 or 20:80		•
Eyepiece	Wide field eyepiece WF10X/22mm, diopter adjustable, tube diameter: 30mm	•	•
	WF15×/16mm, diopter adjustable	○	○
	WF10×/22mm with 0.1mm eyepiece micrometer	○	○
Infinite Plan Achromatic Objective	2X/ NA 0.06	○	○
	4X/ NA 0.10, WD=12.10mm	•	•
	10X/ NA 0.25, WD4.64mm	•	•
	20X/ NA 0.40 (S), WD=2.41mm	•	•
	40X/ NA 0.66 (S), WD=0.65mm	•	•
	60X/ NA 0.80 (S), WD=0.33mm	○	○
	(Oil) 100X/ NA 1.25 (S), WD=0.12mm	•	•
	(Water) 100X/ NA 1.15 (S), WD=0.19mm	○	○
Infinity Plan Semi-Apochromatic Fluorescence Objectives	4X/NA=0.16, WD=17.15mm	○	○
	10X/NA=0.30, WD=7.68mm	○	○
	20X/NA=0.50, WD=1.96mm	○	○
	40X/NA=0.75, WD=0.78mm	○	○
	40X/NA=0.75, WD=0.78mm (for TB, no correction of slide cover)	○	○
	(Oil) 100X/NA=1.3, WD=0.15mm	○	○
Nosepiece	Backward quintuple nosepiece	•	•
Stage	Rackless (integrated) stage, size: 182mm*140mm, travel range: 77mm*52mm, with two slide holders	•	•
	Stage size: 175mm*145mm. Travel: 78mm*55mm, scale: 0.1mm. With two slide holders	○	○
Condenser	Swing-out condenser NA 0.9/0.13, with iris diaphragm	•	•
	Dark field condenser, dry, apply to 4X-40X objective	○	○
	Dark field condenser, wet, apply to 100X objective	○	○
Focusing	Coaxial coarse and fine focusing knob, coarse focusing travel range: 25mm, coarse stroke 42.4mm/rotation, fine stroke 0.2mm/rotation, fine division: 2μm	•	•
Field Diaphragm	Field diaphragm	•	•
Koehler Illumination	12V/30W Halogen lamp	•	•
	5W LED lamp	○	○
Polarizing Unit	Analyzer and polarizer	○	○
Phase Contrast Unit	Quintuple hole turret unit with 10X/20X/40X/100X phase contrast objective	○	○
	Independent slot with 10X/20X/40X/100X phase contrast objective	○	○
Fluorescence Attachment	B/G Epi fluorescence unit (six-hole disc media which can be fixed with UV/V/B/G and another filters), 100W mercury lamp.	○	○
	UV/V/B/G Epi fluorescence unit (six-hole disc media which can be fixed with UV/V/B/G and another filters), 100W mercury lamp.	○	○

	B/G Epi fluorescence unit (six-hole disc media which can be fixed with UV/V/B/G), 5W-LED fluorescence lamp.	●	●
	UV/V/B/G Epi fluorescence unit (six-hole disc media which can be fixed with UV/V/B/G), 5W-LED fluorescence lamp.	○	○
	B or G fluorescence unit, 5W-LED fluorescence lamp.	○	○
	Auramine long pass fluorescence unit, with 5W LED fluorescence lamp	○	○
	B/G fluorescence unit, 5W-LED fluorescence lamp.	○	○
Video Adapter	0.35X C-mount adapter, adjustable focus		○
	0.5X C-mount adapter, adjustable focus		●
	0.75X C-mount adapter, adjustable focus		○
	1X C-mount adapter, adjustable focus		○
	Trinocular digital eyepiece interface		○
Photo Adapter	Used for CANON / NIKON / OLYMPUS/ SONY DLSR cameras		○
Filter	Blue filter (Φ45)	●	●
	Green filter (Φ45)	○	○
	Amber filter (Φ45)	○	○
Power Supply	Wide voltage input: 100V~240V	●	●
Packing	1 carton/set, Packing Size: 755mm×340mm×440mm, Gross Weight: 17 kgs, Net Weight: 15 kgs	●	●

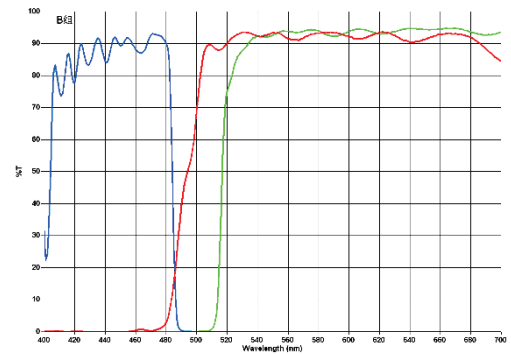
Note: "●" In Table Is Standard outfits, "○" Is Optional Accessories.

Fluorescence filters

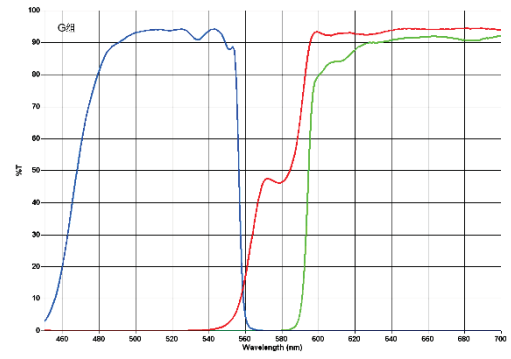
Auramine O	Wavelength (nm)
Exciter	470Sp
Dichroic	480DRLP
Barrier	485LP



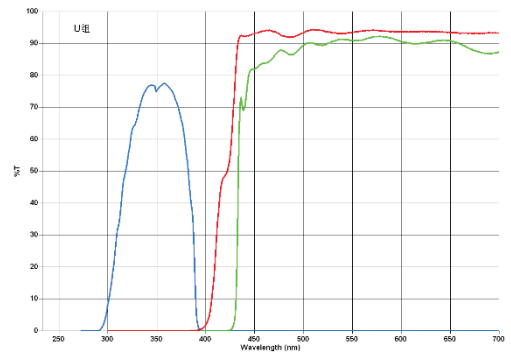
B Excitation	Wavelength (nm)
Exciter	470/37
Dichroic	505LP
Barrier	515LP



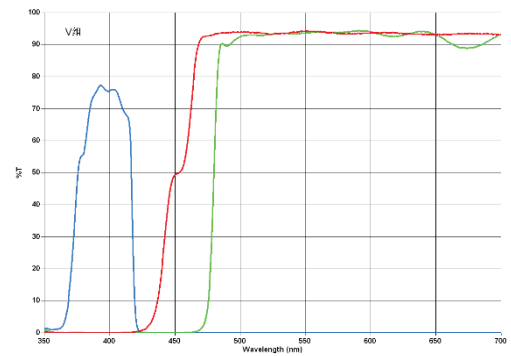
G Excitation	Wavelength (nm)
Exciter	500-550
Dichroic	575
Barrier	590



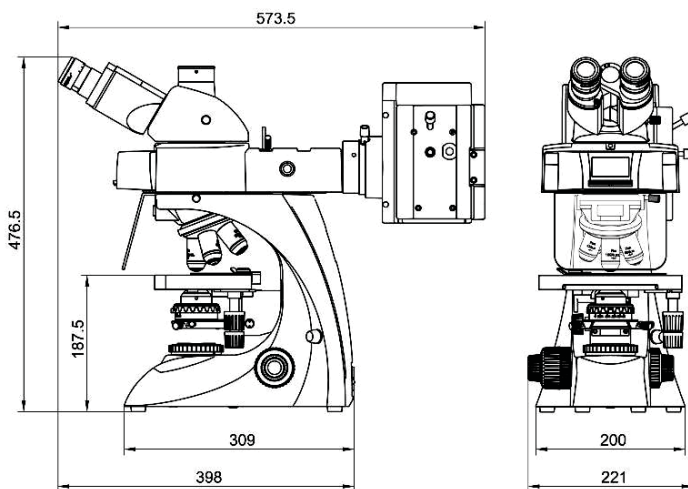
Uv Excitation	Wavelength (nm)
Exciter	330-380
Dichroic	400
Barrier	435



V Excitation	Wavelength (nm)
Exciter	380-420
Dichroic	430
Barrier	460

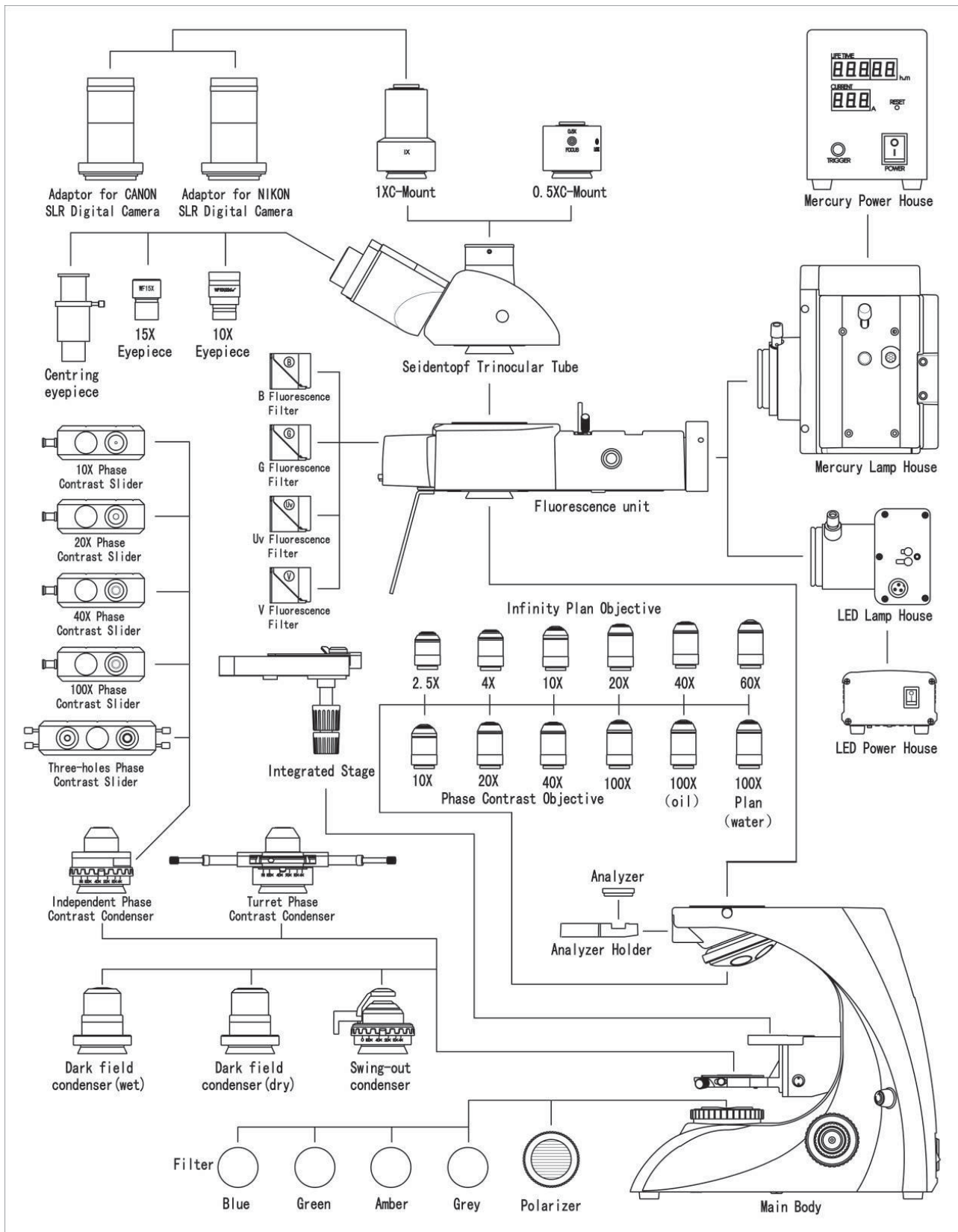


Dimension



Unit: mm

Layout Diagram



6. BS-2063F2 LED Fluorescence Microscope



BS-2063F2T(LED)

Introduction

BS-2063F(LED) Series LED Fluorescence Microscope is specifically designed for the daily routine work in the demanding applications of education, pathology investigation, clinical and laboratory usage. Innovative LED as fluorescence illumination source, provide excellent image with easy and comfortable usage experience.

BS-2063F2(LED, TB) Series LED Fluorescence Microscope is a professional solution for tuberculosis test applications with LED fluorescence excitation and transmitted-light brightfield illumination.

If you want to analyze tuberculosis with Ziehl-Neelsen-Staining or if you like to use fluorescence excitation, e.g. with Auramine O dye. BS-2063F2(LED,TB) can simply switch between the two modes.

Feature

1. Rackless stage



Rackless wire driven mechanical fixed stage with focus lock is safer than traditional stage.

2. Quintuple turret phase contrast unit



Quintuple turret phase contrast unit with 10X/20X/40X/100X Infinite plan phase contrast objective for phase contrast and bright field observation.

3. Other accessories



N.A.0.9/0.13 Swing-out Condenser
 Dark field condenser (dry) available to 4X-60X Objective
 Dark field condenser (oil) available to 100X Objective



Infinite Plan Objectives

Application

BS-2063F(LED) Series LED Fluorescence Microscope is specifically designed for the daily routine work of education, pathology diagnosis, hospital, clinical and laboratory examinations and research.

Specification

BS-2063F2B (LED), BS-2063F2T (LED)

Item	Specification	BS-2063F2B (LED)	BS-2063F2T (LED)
Optical System	Color Corrected Infinite Optical System	●	●
Viewing Head	Inclined 30° binocular tube, 360° rotatable, interpupillary distance: 48-76mm	●	
	Inclined 30° trinocular tube, 360° rotatable, interpupillary distance: 48-76mm, splitting ratio: eyepiece: trinocular=100:0 or 20:80		●
Eyepiece	Wide field eyepiece WF10X/22mm, diopter adjustable, tube diameter: 30mm	●	●
	WF15X/16mm, diopter adjustable	○	○
	WF10X/22mm with 0.1mm eyepiece micrometer	○	○

Infinite Plan Achromatic Objective	2X/ NA 0.06	○	○
	4X/ NA 0.10, WD=12.10mm	●	●
	10X/ NA 0.25, WD4.64mm	●	●
	20X/ NA 0.40 (S), WD=2.41mm	●	●
	40X/ NA 0.66 (S), WD=0.65mm	●	●
	60X/ NA 0.80 (S), WD=0.33mm	○	○
	(Oil) 100X/ NA 1.25 (S), WD=0.12mm	●	●
(Water) 100X/ NA 1.15 (S), WD=0.19mm	○	○	
Infinity Plan Semi-Apochromatic Fluorescence Objectives	4X/NA=0.16, WD=17.15mm	○	○
	10X/NA=0.30, WD=7.68mm	○	○
	20X/NA=0.50, WD=1.96mm	○	○
	40X/NA=0.75, WD=0.78mm	○	○
	40X/NA=0.75, WD=0.78mm (for TB, no correction of slide cover)	○	○
	(Oil) 100X/NA=1.3, WD=0.15mm	○	○
Nosepiece	Backward quintuple nosepiece	●	●
Stage	Rackless (integrated) stage, size: 182mm*140mm, travel range: 77mm*52mm, with two slide holders	●	●
	Stage size: 175mm*145mm. Travel: 78mm*55mm, scale: 0.1mm. With two slide holders	○	○
Condenser	Swing-out condenser NA 0.9/0.13, with iris diaphragm	●	●
	Dark field condenser, dry, apply to 4X-40X objective	○	○
	Dark field condenser, wet, apply to 100X objective	○	○
Focusing	Coaxial coarse and fine focusing knob, coarse focusing travel range: 25mm, coarse stroke 42.4mm/rotation, fine stroke 0.2mm/rotation, fine division: 2μm	●	●
Field Diaphragm	Field diaphragm	●	●
Koehler Illumination	12V/30W Halogen lamp	●	●
	5W LED lamp	○	○
Polarizing Unit	Analyzer and polarizer	○	○
Phase Contrast Unit	Quintuple hole turret unit with 10X/20X/40X/100X phase contrast objective	○	○
	Independent slot with 10X/20X/40X/100X phase contrast objective	○	○
Fluorescence Attachment	B/G Epi fluorescence unit (six-hole disc media which can be fixed with UV/V/B/G and another filters), 100W mercury lamp.	○	○
	UV/V/B/G Epi fluorescence unit (six-hole disc media which can be fixed with UV/V/B/G and another filters), 100W mercury lamp.	○	○
	B/G Epi fluorescence unit (six-hole disc media which can be fixed with UV/V/B/G), 5W-LED fluorescence lamp.	○	○
	UV/V/B/G Epi fluorescence unit (six-hole disc media which can be fixed with UV/V/B/G), 5W-LED fluorescence lamp.	○	○
	B or G fluorescence unit, 5W-LED fluorescence lamp.	●	●
	Auramine long pass fluorescence unit, with 5W LED fluorescence lamp	○	○

	B/G fluorescence unit, 5W-LED fluorescence lamp.	○	○
Video Adapter	0.35X C-mount adapter, adjustable focus		○
	0.5X C-mount adapter, adjustable focus		●
	0.75X C-mount adapter, adjustable focus		○
	1X C-mount adapter, adjustable focus		○
	Trinocular digital eyepiece interface		○
Photo Adapter	Used for CANON / NIKON / OLYMPUS/ SONY DSLR cameras		○
Filter	Blue filter (Φ45)	●	●
	Green filter (Φ45)	○	○
	Amber filter (Φ45)	○	○
Power Supply	Wide voltage input: 100V~240V	●	●
Packing	1 carton/set, Packing Size: 755mm×340mm×440mm, Gross Weight: 17 kgs, Net Weight: 15 kgs	●	●

BS-2063F2B (LED, TB), BS-2063F2T (LED, TB)

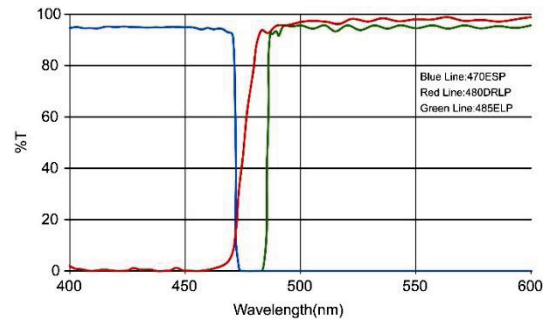
Item	Specification	BS-2063F2B (LED, TB)	BS-2063F2T (LED, TB)
Optical System	Color Corrected Infinite Optical System	●	●
Viewing Head	Inclined 30° binocular tube, 360° rotatable, interpupillary distance: 48-76mm	●	
	Inclined 30° trinocular tube, 360° rotatable, interpupillary distance: 48-76mm, splitting ratio: eyepiece: trinocular=100:0 or 20:80		●
Eyepiece	Wide field eyepiece WF10X/22mm, diopter adjustable, tube diameter: 30mm	●	●
	WF15×/16mm, diopter adjustable	○	○
	WF10×/22mm with 0.1mm eyepiece micrometer	○	○
Infinite Plan Achromatic Objective	2X/ NA 0.06	○	○
	4X/ NA 0.10, WD=12.10mm	●	●
	10X/ NA 0.25, WD4.64mm	●	●
	20X/ NA 0.40 (S), WD=2.41mm	●	●
	40X/ NA 0.66 (S), WD=0.65mm	●	●
	60X/ NA 0.80 (S), WD=0.33mm	○	○
	(Oil) 100X/ NA 1.25 (S), WD=0.12mm	●	●
(Water) 100X/ NA 1.15 (S), WD=0.19mm	○	○	
Infinity Plan Semi- Apochromatic Fluorescence Objectives	4X/NA=0.16, WD=17.15mm	○	○
	10X/NA=0.30, WD=7.68mm	○	○
	20X/NA=0.50, WD=1.96mm	○	○
	40X/NA=0.75, WD=0.78mm	○	○
	40X/NA=0.75, WD=0.78mm (for TB, no correction of slide cover)	○	○
	(Oil) 100X/NA=1.3, WD=0.15mm	○	○
Nosepiece	Backward quintuple nosepiece	●	●

Stage	Rackless (integrated) stage, size: 182mm*140mm, travel range: 77mm*52mm, with two slide holders	●	●
	Stage size: 175mm*145mm. Travel: 78mm*55mm, scale: 0.1mm. With two slide holders	○	○
Condenser	Swing-out condenser NA 0.9/0.13, with iris diaphragm	●	●
	Dark field condenser, dry, apply to 4X-40X objective	○	○
	Dark field condenser, wet, apply to 100X objective	○	○
Focusing	Coaxial coarse and fine focusing knob, coarse focusing travel range: 25mm, coarse stroke 42.4mm/rotation, fine stroke 0.2mm/rotation, fine division: 2μm	●	●
Field Diaphragm	Field diaphragm	●	●
Koehler	12V/30W Halogen lamp	●	●
Illumination	5W LED lamp	○	○
Polarizing Unit	Analyzer and polarizer	○	○
Phase Contrast Unit	Quintuple hole turret unit with 10X/20X/40X/100X phase contrast objective	○	○
	Independent slot with 10X/20X/40X/100X phase contrast objective	○	○
Fluorescence Attachment	B/G Epi fluorescence unit (six-hole disc media which can be fixed with UV/V/B/G and another filters), 100W mercury lamp.	○	○
	UV/V/B/G Epi fluorescence unit (six-hole disc media which can be fixed with UV/V/B/G and another filters), 100W mercury lamp.	○	○
	B/G Epi fluorescence unit (six-hole disc media which can be fixed with UV/V/B/G), 5W-LED fluorescence lamp.	○	○
	UV/V/B/G Epi fluorescence unit (six-hole disc media which can be fixed with UV/V/B/G), 5W-LED fluorescence lamp.	○	○
	B or G fluorescence unit, 5W-LED fluorescence lamp.	○	○
	Auramine long pass fluorescence unit, with 5W LED fluorescence lamp	●	●
	B/G fluorescence unit, 5W-LED fluorescence lamp.	○	○
Video Adapter	0.35X C-mount adapter, adjustable focus		○
	0.5X C-mount adapter, adjustable focus		●
	0.75X C-mount adapter, adjustable focus		○
	1X C-mount adapter, adjustable focus		○
	Trinocular digital eyepiece interface		○
Photo Adapter	Used for CANON / NIKON / OLYMPUS/ SONY DLSR cameras		○
Filter	Blue filter (Φ45)	●	●
	Green filter (Φ45)	○	○
	Amber filter (Φ45)	○	○
Power Supply	Wide voltage input: 100V~240V	●	●
Packing	1 carton/set, Packing Size: 755mm×340mm×440mm, Gross Weight: 17 kgs, Net Weight: 15 kgs	●	●

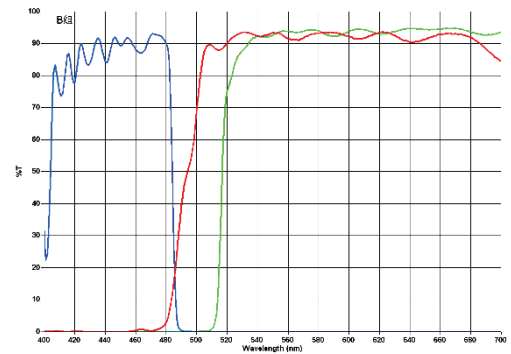
Note: "●" In Table Is Standard outfits, "○" Is Optional Accessories.

Fluorescence filters

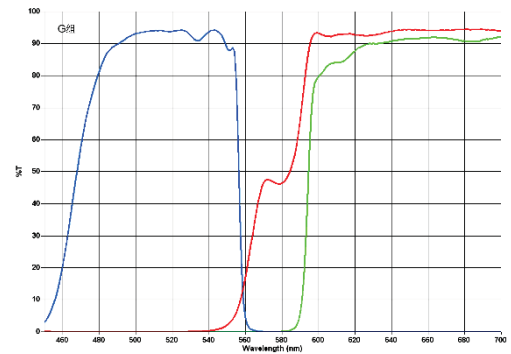
Auramine O	Wavelength (nm)
Exciter	470Sp
Dichroic	480DRLP
Barrier	485LP



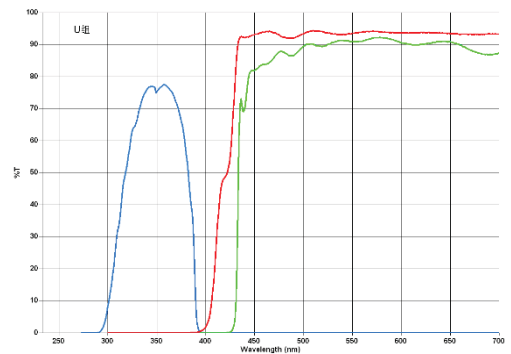
B Excitation	Wavelength (nm)
Exciter	470/37
Dichroic	505LP
Barrier	515LP



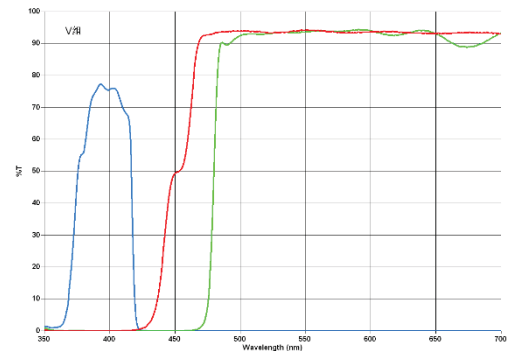
G Excitation	Wavelength (nm)
Exciter	500-550
Dichroic	575
Barrier	590



Uv Excitation	Wavelength (nm)
Exciter	330-380
Dichroic	400
Barrier	435



V Excitation	Wavelength (nm)
Exciter	380-420
Dichroic	430
Barrier	460



7. BS-2080F(LED) Fluorescence Biological Microscope



Introduction

BS-2080F(LED) Series LED fluorescence microscope is a newly developed microscope, the microscope uses LED as the fluorescence light source, the life span of the LED lamp is much longer than mercury lamp, the performance is also better.

Feature

1. Excellent fluorescence image with infinite optical system.
2. LED illumination with 50,000 hours life span.
3. No need for cooling system and protection device due to LED cold light source.
4. 465-476nm excited wavelength with high SNR.
5. Convenient to use, no need warm-up.
6. More fluorescence filters are available for different applications.

Application

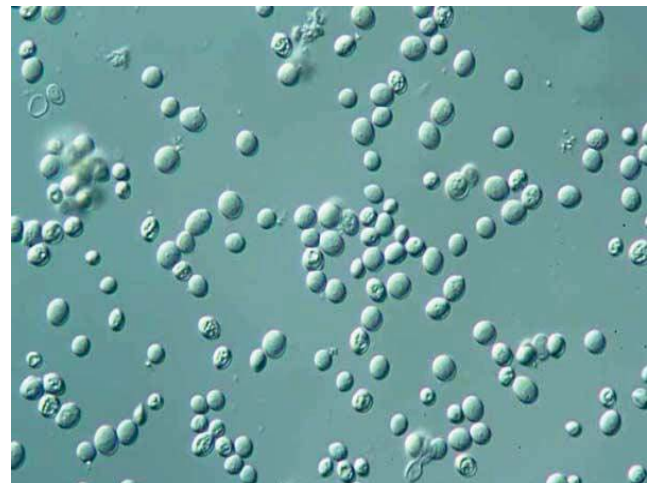
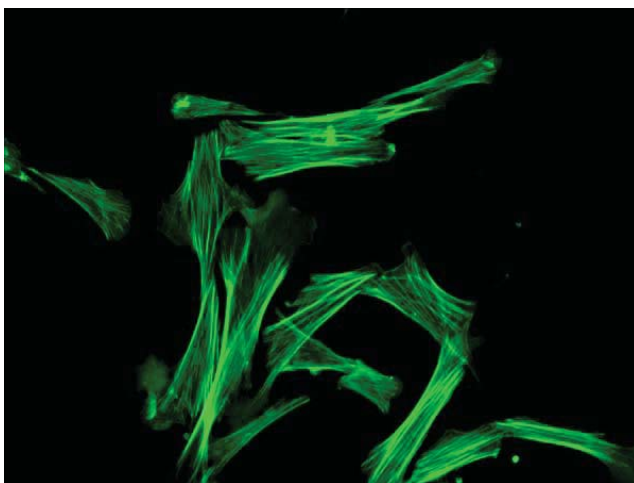
BS-2080F(LED) LED Fluorescence microscope is used to study the absorbing, transportation, chemicals distribution and positioning in cells. It is widely used in disease examination, immune diagnosis and life science areas.

Specification

Item	Specification				BS-2080F(LED)
Optical System	Infinite Optical System				●
Viewing Head	Seidentopf Trinocular Head, Inclined at 30°, 360° Rotatable, Interpupillary Distance 48-75mm				●
Eyepiece	Wide Field Eyepiece WF10×/22mm				●
Nosepiece	Backward Quintuple Nosepiece				●
Objective	Infinite Plan Achromatic Objective 4×, 10×, 40×, 100×				●
	Infinite Plan Achromatic Objective 20×, 60×,				○
	Infinite Plan Fluorescence Objective 4×,10×,20×,40×, 100×				○
Condenser	Swing Condenser NA 0.9/0.25				●
Focusing	Coaxial Coarse and Fine Adjustment, Fine Division 0.001mm, Coarse Stroke 37.7mm per Rotation, Fine Stroke 0.1mm per Rotation, Moving Range 24mm				●
Stage	Double Layers Mechanical Stage 185×142/ 75×55 mm				●
Photo Adapter	Used to connect Nikon or Canon DSLR camera				○
Video Adapter	1× C-mount, 0.5× C-mount				○
Transmitted Illumination	External Kohler illumination, Aspherical collector, Halogen lamp 6V/30W				●
Reflected Light Source		Excitation	Dichroic Mirror	Barrier Filter	
	Blue excitation	BP460~490	DM505	BA515	●
	Green excitation	BP510~550	DM570	BA590	●
Lamp	3W LED Lamp(465-476nm)				●
	3W LED Lamp(525-530nm)				●
Immersion Oil	Fluorescence Free Oil				●

Note: ●Standard Outfit, ○Optional

Sample Images



8. BS-3060F Fluorescence Stereo Microscope



Introduction

BS-3060F series fluorescence stereo microscopes were designed for observation of live cells. They cover wide magnification range from 2.4x~480x, and offer sophisticated accessories. This allows the scientist to see and photograph specimens from macro views to high-magnification micro visualization. Photo tube comes with the microscope, CCD camera can be mounted on the photo tube for image capture and analysis.

Feature

1. Excellent Image Quality and Performance with Infinity Parallel Optical System.
2. High-eyepoint Eyepieces with Diopter Adjustment makes comfortable viewing.
3. Wide Magnification range from 2.4x~480x, allows you to select the best magnification to match your application, extending from the macro to the micro range.
4. High quality Epi-fluorescence attachment allows easy observation of living cells under fluorescence methods such as GFP. Switching between fluorescence and transmitted illumination is quick and easy.
5. CCD camera can be mounted on the photo tube. Because 100% of the light is delivered to the photo port, bright images are guaranteed.
6. A Wide Range of Accessories are available for Multi-purpose.

Application

BS-3060 series fluorescence stereo microscopes can be used in biology, life science, Forensic Science, Embryology/IVF, Lab-on-a-Chip, Palaeontology, Marine Biology, Regenerative Studies, Formulation Science, Veterinary areas and so on. They provide great help for scientists.

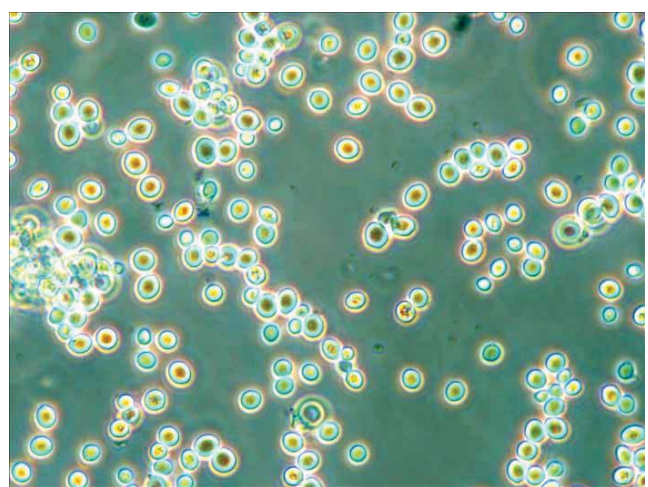
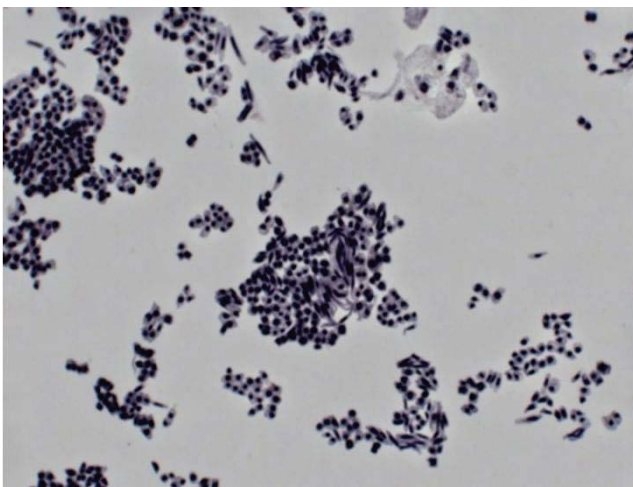
Specification

Item	Specification	BS-3060	BS-3060	BS-3060
		FA	FB	FC
Optical System	Infinite Parallel Zoom Optical System	•	•	•
Viewing Head	Binocular Head, 20°Inclination, Interpupillary Distance 55-75mm	•	•	•

	Tilting Binocular Eyepiece Tube, 5°-35° Inclined, Interpupillary Distance 55-75mm	○	○	○
Eyepiece	EW10×/Φ22mm	●	●	●
	EW10×/Φ24mm	○	○	○
	WF15×/Φ16mm	○	○	○
	WF20×/Φ12mm	○	○	○
	WF30×/Φ8mm	○	○	○
Fluorescence Attachment	GFP-B(EX460-500,DM505,BA510-560)	●	●	●
	GFP-L(EX460-500,DM505,BA510)	●	●	●
	G(EX515-550, DM570, BA590)	○	○	○
Zoom Objective	0.8×-5×	●		
	0.8×-6.4×		●	
	0.8×-8×			●
Objective	Plan Achromatic Objective 1×, W.D.: 78mm	●	●	●
	Achromatic Objective 0.3×, W.D.: 276mm	○	○	○
	Achromatic Objective 0.5×, W.D.: 195mm	○	○	○
	Plan Apochromatic Objective 0.5×, W.D.: 126mm	○	○	○
	Plan Achromatic Objective 2×, W.D.: 32.5mm	○	○	○
Zoom Ratio	1: 6	●		
	1: 8		●	
	1: 10			●
Focusing Range	105mm	●	●	●
Stand	Coaxial coarse focusing stand	●	●	
	Coaxial coarse&fine focusing stand			●
Illumination	Transmitted & Incident LED Illumination, Brightness Adjustable	●	●	●
	100W Ultra hi-voltage spherical mercury lamp, power supplier with digital display	●	●	●

Note: ● Standard Outfit, ○ Optional

Sample Image



9. BS-7000A Upright Fluorescence Microscope



Introduction

BS-7000A fluorescence microscope is a laboratory fluorescence microscope with perfect infinite optical system. The microscope uses mercury lamp as the light source, the fluorescence attachment has 6 positions for filter blocks, which allows easy change of filter blocks for various fluorochrome.

Feature

1. Perfect image with infinite optical system.
2. High resolution fluorescence objectives are optional for excellent fluorescence images.
3. Advanced and precision lamp housing reduces the light leak.
4. Reliable power supply with digital display and timer.

Application

BS-7000A Fluorescence microscope is used to study the absorbing, transportation, chemicals distribution and positioning in cells. It is widely used in universities, hospitals and life science labs for disease examination, immune diagnosis and scientific research.

Specification

Item	Specification				BS-7000A
Optical System	Infinite Optical System				●
Viewing Head	Seidentopf Trinocular Head, Inclined at 30°, Interpupillary Distance 48-75mm				●
Eyepiece	Extra Wide Field Eyepiece EW10×/22mm, Eyepiece tube diameter 30mm				●
Nosepiece	Backward Quintuple Nosepiece				●
	Backward Sextuple Nosepiece				○
Objective	Infinite Plan Achromatic Objective	2×/0.05,	W.D.=18.3mm		○
		4×/0.10,	W.D.=17.3mm		●
		10×/0.25,	W.D.=10mm		●
		20×/0.40,	W.D.=5.1mm		○
		40×/0.65(S),	W.D.=0.54mm		●
		60×/0.8(S),	W.D.=0.14mm		○
		100×/1.25(S, Oil),	W.D.=0.13mm		●
	Infinite Plan Fluorescence Objective	4×/0.13,	W.D.=16.3mm		○
		10×/0.30,	W.D.=12.4mm		○
		20×/0.50,	W.D.=1.5mm		○
40×/0.75(S),		W.D.=0.35mm		○	
100×/1.3(S, Oil),		W.D.=0.13mm		○	
Condenser	Swing Condenser NA 0.9/ 0.25				●
Focusing	Coaxial Coarse and Fine Adjustment, Fine Division 0.001mm, Coarse Stroke 37.7mm per Rotation, Fine Stroke 0.1mm per Rotation, Moving Range 24mm				●
Stage	Double Layers Mechanical Stage 185×142mm, Moving Range 75×55mm				●
Photo Adapter	Used to connect Nikon or Canon DSLR camera to the microscope				○
Video Adapter	1× or 0.5× C-mount adapter				○
Transmitted Kohler Illumination	External Illumination, Aspherical Collector with Kohler Illumination, Halogen Lamp 6V/30W, Brightness Adjustable				●
	External Illumination, Aspherical Collector with Kohler Illumination, Halogen Lamp 24V/100W, Brightness Adjustable				○
	3W LED Illumination, Brightness Adjustable				○
	5W LED Illumination, Brightness Adjustable				○
Reflected Light Source		Excitation	Dichroic Mirror	Barrier Filter	
	Blue Excitation	BP460~490	DM500	BA520	●
	Blue Excitation(B1)	BP460~495	DM505	BA510-550	○
	Green Excitation	BP510~550	DM570	BA590	●
	Ultraviolet Excitation	BP330~385	DM400	BA420	○
	Violet Excitation	BP400~410	DM455	BA455	○
	Red Excitation	BP620~650	DM660	BA670-750	○
Lamp	100W HBO Ultra Hi-voltage Spherical Mercury Lamp				●
Protection barrier	Barrier to Resist the Ultraviolet Light				●
Power Supplier	Power Supplier NFP-1, 220V/ 110V Voltage Interchangeable, Digital Display				●
Immersion Oil	Fluorescence Free Oil				●

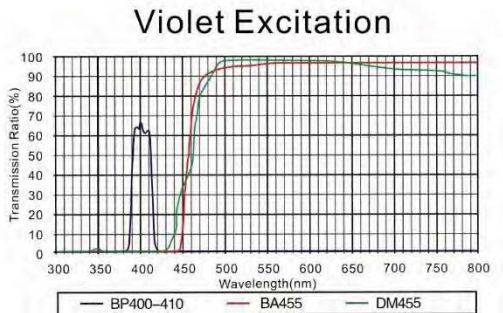
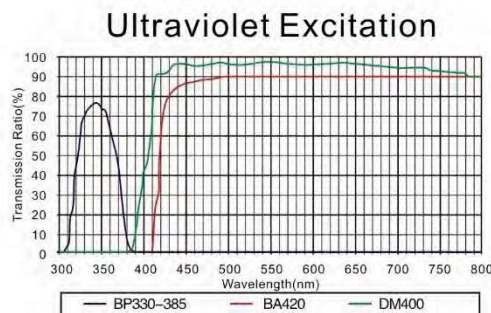
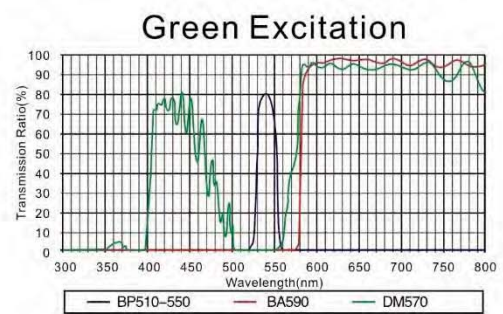
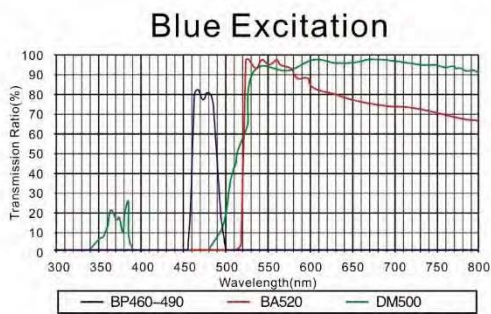
Filter	Neutral ND25/ ND6 Filter	○
Centering Target		○

Note: ●Standard Outfit, ○Optional

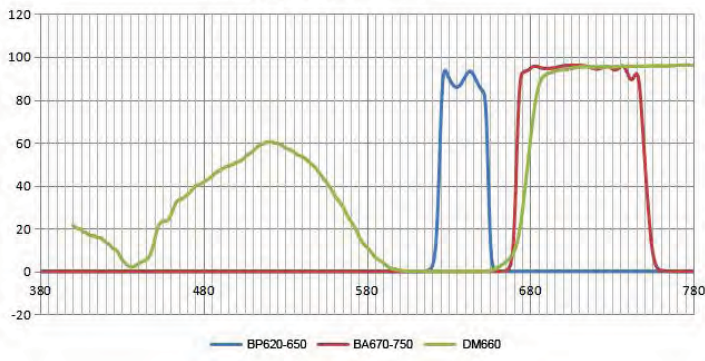
Epi-fluorescence Attachment



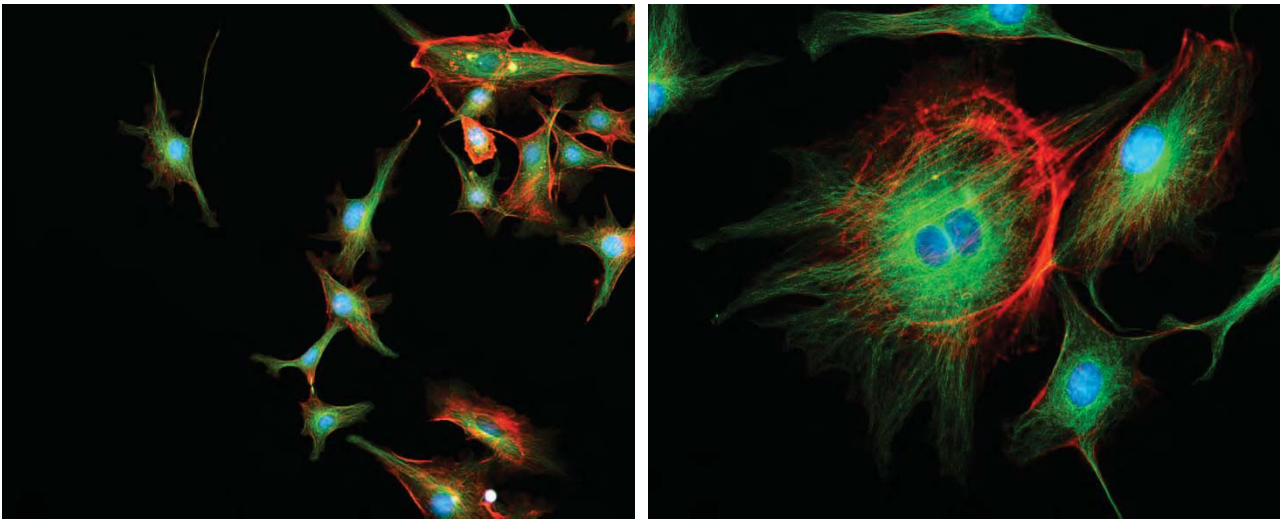
Characteristics of Mirror Units Wavelength



Red Excitation



Sample Image



10. BS-7000B Inverted Fluorescence Microscope



Introduction

BS-7000B Inverted Fluorescence Microscope is specifically designed for the observation of cell culture. Infinite Optical System gives excellent Optical performance. Excellent high resolution fluorescence objectives are optional to generate high quality fluorescence images. This microscope can be your best assistant in laboratory research.

Feature

1. Excellent fluorescence image with high resolution fluorescence objectives.
2. Protect the light leak with advanced lamp housing.
3. Excellent Optical Performance with Infinite Optical System.
4. Innovative Stand structure, Sharp Image Display, Convenient and Special for Viewing Incubating Cell Tissue.
5. More stable power supply, digital display and timer.

Application

BS-7000B Inverted Fluorescence is specifically designed for the observation of cell culture. It is widely used in disease examination, immune diagnosis and laboratory research.

Specification

Item	Specification	BS-7000B
Optical System	Infinite Optical System	•
Viewing Head	Seidentopf Trinocular Head Inclined at 30°, Interpupillary 48-75mm	•

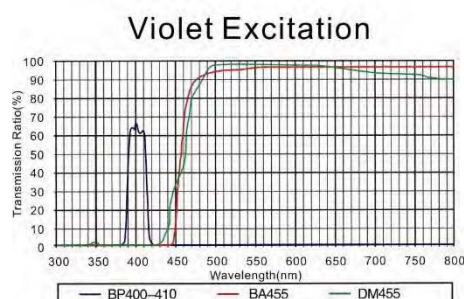
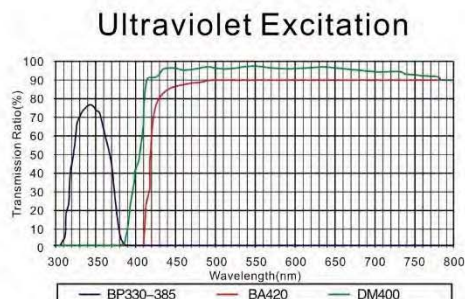
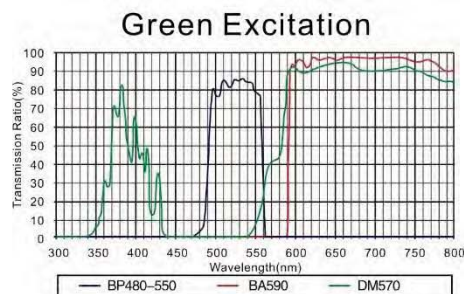
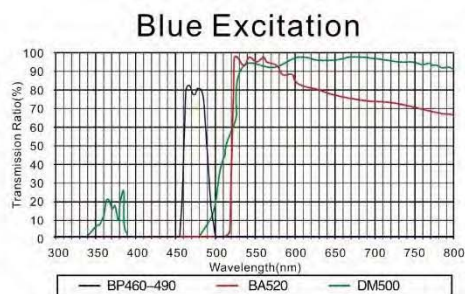
Eyepiece	High-point, Extra Wide Field Eyepiece EW10×/ 22				●
Nosepiece	Quintuple Nosepiece				●
Objective	LWD Infinite Plan Objective	4×/0.1, WD 17.3mm		●	
		10×/0.25, WD 10mm		○	
		20×/0.4, WD 5.1mm		○	
		40×/0.6, WD 2.1mm		●	
	Infinite Plan Phase Objective	PH 10×/0.25, WD 10mm		●	
		PH 20×/0.4, WD 5.1mm		●	
		PH 40×/0.6, WD 2.1mm		○	
	Infinite Plan Fluorescence Objective	4×/0.13, WD 16.3mm		○	
		10×/0.3, WD 12.4mm		○	
		20×/0.4, WD 1.5mm		○	
40×/0.6, WD 2.2mm		○			
Condenser	ELWD Condenser NA 0.3, LWD 72mm				●
Focusing	Coaxial Coarse and Fine Adjustment, Fine Division 0.002mm, Coarse Stroke 37.7mm per Rotation, Fine Stroke 0.2mm per Rotation, Moving Range up 8mm, down 3mm				●
Stage	Plain stage 160×250 mm				●
	Glass Insert				●
	Attachable Mechanical Stage, X- Y Coaxial Control, Moving Range 120×78 mm				○
	Auxiliary Stage 70×180mm				●
	Terasaki Holder				○
	φ35mm Petri Dish Holder				○
	φ54mm Slide Glass Holder				○
Illumination	Halogen Lamp 6V/ 30W				●
	3W LED				○
Filter	Blue/ Green and Frosted Glass Filter (Φ45mm)				●
Phase Annulus					●
Telescope	Centering Telescope(Φ30)				○
Photo Attachment	Photo Attachment for SLR Cameras				○
Video Adapter	Video Adapter with C Mount				○
Reflected Light Source		Excitation	Dichroic Mirror	Barrier Filter	
	Blue Excitation	BP460~490	DM500	BA520	●
	Blue Excitation(B1)	BP460~495	DM505	BA510-550	○
	Green Excitation	BP510~550	DM570	BA590	●
	Ultraviolet Excitation	BP330~385	DM400	BA420	○
	Violet Excitation	BP400~410	DM455	BA455	○
	Red Excitation	BP620~650	DM660	BA670-750	○
Lamp	100W HBO Ultra Hi-voltage Spherical Mercury Lamp				●
Protection barrier	Barrier to Resist the Ultraviolet Light				●
Power Supplier	Power Supplier NFP-1, 220V/ 110V interchangeable, Digital Display				●
Filter	Neutral ND25/ ND6 Filter				○
Centering Plate					●

Note: ● Standard Outfit, ○ Optional

BS-7000B Inverted Fluorescence Attachments



Characteristics of Mirror Units Wavelength



Sample Images

