
DIGITAL MICROSCOPES

- 1. BLM1-207S LCD Digital Microscope 2
- 2. BLM1-210 LCD Digital Microscope 5
- 3. BLM1-310A LCD Digital Microscope..... 13
- 4. BLM1-370 Digital Microscope 17
- 5. BLM1-380 Digital Microscope 23
- 6. BLM1-480 Motor Zoom Smart Measuring Video Microscope 28
- 7. BLM2-241 LCD Digital Biological Microscope 42
- 8. BLM2-274 LCD Digital Biological Microscope 44
- 9. BS-2010MD/BD Digital Biological Microscope 51
- 10. BS-2020MD/BD Digital Biological Microscope 53
- 11. BSDM-500 3D Super-Depth Digital Microscope 55

1. BLM1-207S LCD Digital Microscope



Introduction

BLM1-207S is a new microscope, this microscope uses a 7-inch screen and a built-in 4 mega pixel HD imaging sensor, which can shoot high-definition videos and images, and the images can be saved to a Micro SD card. The microscope also has HDMI and USB output, which can be connected to an LCD monitor or computer respectively. When the microscope is connected to a computer via a USB cable, the software has a measurement function. The built-in software of the microscope supports 10 languages, which can be used by customers in different countries and regions. This microscope is widely used in mobile phone repair, computer repair, clock repair, antique identification, semiconductor inspection, electronic product inspection, botany and insect research and other fields.

Feature

1. It comes with a 7-inch LCD screen, and the display effect is good;
2. The angle of the display screen is adjustable, which is convenient for users to observe from multiple angles;
3. The metal bracket can be adjusted forward and backward, bringing 3D visual effect and larger operation space;
4. Metallic black base plate with double clips to fix the specimens;
5. The brightness of the LED light is adjustable, and the image is clear;
6. Support memory card recording and photography;
7. Support HDMI/USB output;
8. Support measurement software.

Application

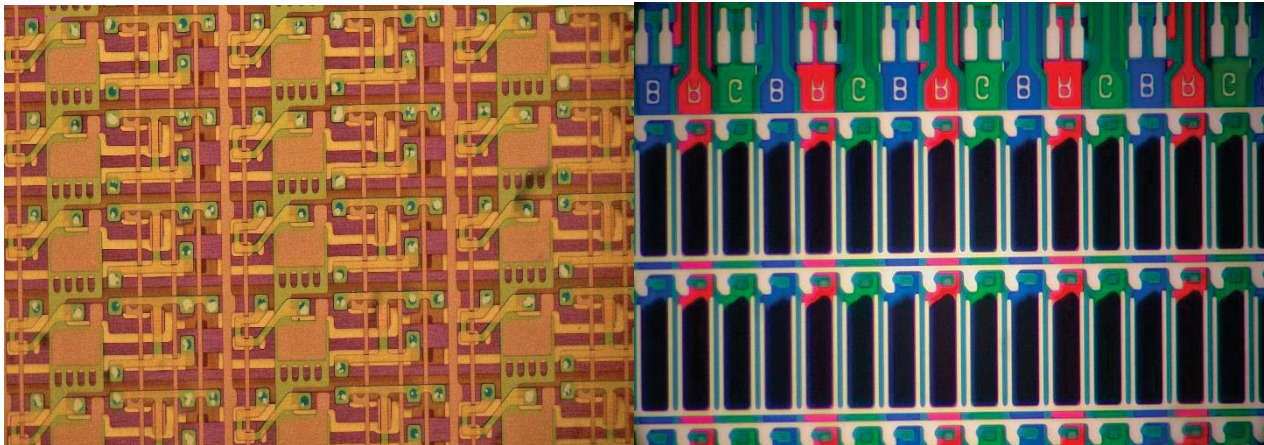
1. Repair of electronic products such as mobile phones/computers

2. Antique appraisal
3. Printed materials inspection
4. Textiles inspection
5. Miniature carving / jewelry
6. Factory production line
7. Clock repair
8. Botany & Entomology
9. Coin collection

Specification

Item	Specification
Image Sensor	4 mega pixel HD sensor
Video Resolution	Ultra HD 2880x2160 24 fps; Full HD 1920x1080 60 fps/30 fps; HD 1280x720 120 fps/60 fps/30 fps;
Video Format	MP4
Magnification	Up to 330X (3x digital magnification output to 27-inch HDMI display)
Photo Resolution	Up to 24M (5600x4200)
Photo Format	JPG
Focus Range	The minimum focusing distance is 2cm
Frame Rate	120f/s max. (600 Lus brightness > HDP120)
Storage	Micro SD memory card, up to 64G (card not included as standard)
Video Output	HDMI/USB output
PC Support	Support Windows XP/7/8/10 system, with PC measurement function (software bonus)
Power Supply	DC 5V, 2A
Light Source	8 LEDs around the bottom of the lens, 2 flexible LEDs on the base of the stand
Bracket Size	20x12x19cm
Screen Resolution	1024x600
Screen Size	7 inches
Certificate	CE/FCC/ROHS/HDMI
Language	10 kinds, Simplified Chinese/ Traditional Chinese/English/Japanese/French/German/Italian/Portuguese /Spanish/Russian
Standard Contents	7 inch microscope× 1, metal bracket×1, 3-in-1 power cable×1, HDMI cable×1, USB cable×1, remote control× 1, UV mirror×1, power adapter ×1, Metal Clip x 2, 10cm Extension Column×1, Instruction Manual×1
Packaging	32x22x10cm/ 1.65 kg
Warranty	3 years

Sample Image



2. BLM1-210 LCD Digital Microscope



BLM1-210A

BLM1-210B



BLM1-210C

Introduction

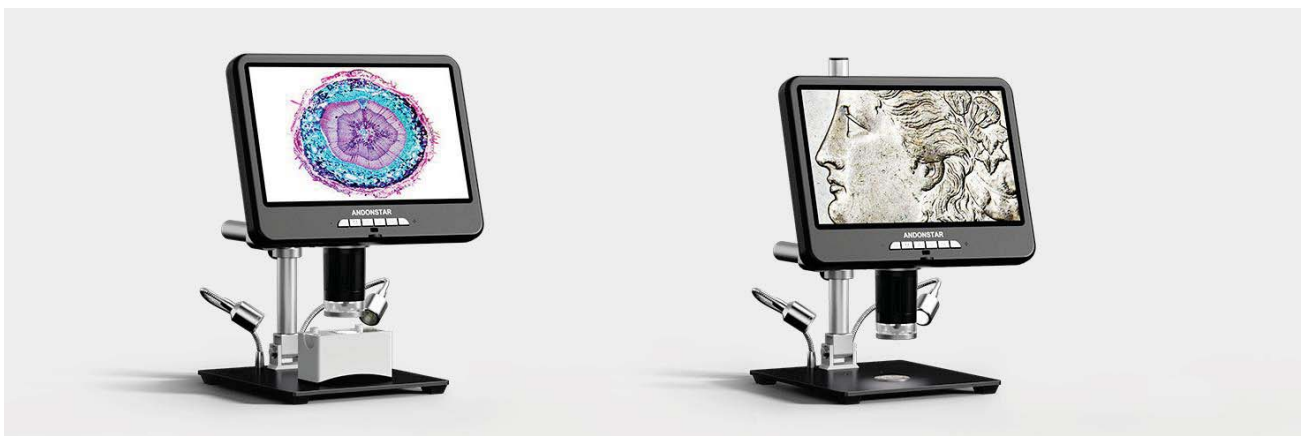
BLM1-210 is a newly developed LCD digital microscope. It has 10.1inch LCD screen and 4K built-in digital camera. It supports real-time output with HDMI 2.0 and USB 3.0 ports. And there are multiple light sources to provide brighter and clearer views. There are also different stand and holder wo meet different needs and base extension for larger space.

Feature

1. 10.1inch LCD screen, high definition and has a very nice display result.
2. True 4K UHD 60fps, high speed and high resolution.
3. Supporting 4K 60fps video and audio recording.
4. Real-time output with HDMI2.0 and USB 3.0 ports.
HDMI 2.0 high-speed output for external display. For optimal image quality, please use HDMI 4K 60fps monitor.
USB 3.0 port for PC connection, dual screen display is not supported.
5. The remote controller can be used to adjust the microscope.
6. BLM1-210 is an all-purpose 4K digital microscope for both high object distance and low object distance.

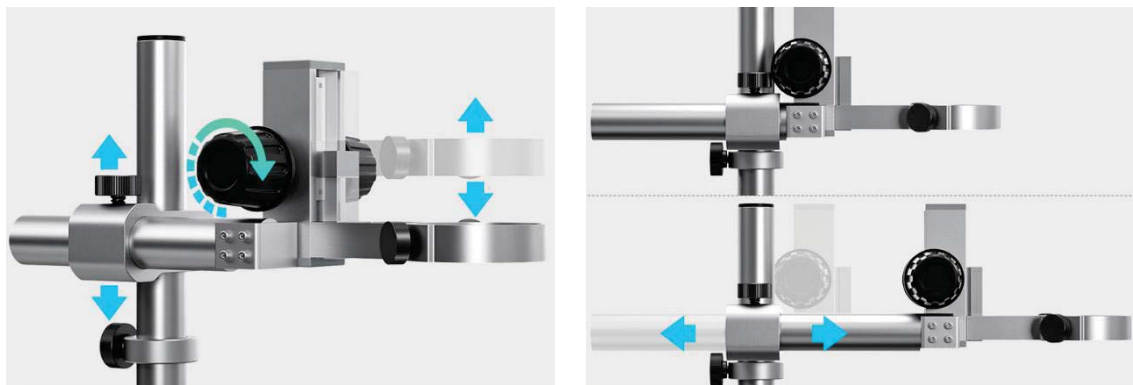
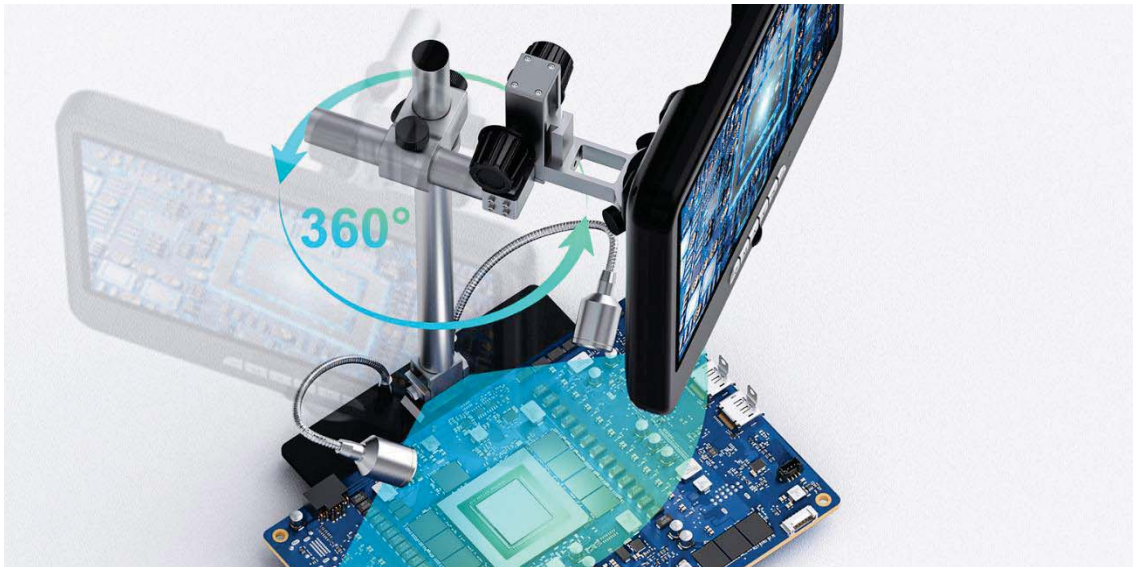


High object distance



Low object distance

7. The universal adjustment bracket of BLM1-210B and BLM1-210C can help the users find a comfortable position.



8. There are multiple light sources to provide brighter and clearer views.
The top illuminator is a ring light with 8 LEDs.



There are 2 universal LED lamps on the metal base as the side light. And there is a bottom light with 1 LED lamp.



Application

BLM1-210 LCD digital microscope can be used for circuit board repair and inspection, semiconductor inspection, SMT work, electronics inspection, dissection, coin collecting, gemology and gemstone setting, engraving, repair and inspection of small parts.

Specification

Item	Specification
Image sensor	4K 60fps high-speed high-definition sensor
Screen Size & Resolution	10.1inch (1280*800)
Magnification	Built-in 10.1inch screen: 560X (with 8 times digital zoom) HDMI output to 32inch 4K monitor: 1760X (with 8 times digital zoom)
Video Output	3840*2160 4K UHD 60fps, 3840*2160 4K UHD 30fps
Video Format	MP4
Photo Resolution	Max 64M (9280*6936)
Photo Format	JPG
Minimum Focus Distance	1.5cm
Frame Rate	Max 60fps
Video Output Interface	HDMI 2.0 4K 60fps
USB output	Support
Storage	Micro-SD card, up to 512G (not included, Class10 high-speed card is recommended)
Power source	DC 5V 3A
Stand size	18cm*20cm*32cm

Item	Specification	BLM1-210A	BLM1-210B	BLM1-210C
Microscope Body & Stands	Microscope with monitor	•	•	•
	Metal base with 2 side lights	•	•	•

	Column with height adjustment holder	●		
	Column with universal adjustment bracket		●	●
	Tool holder			●
	Welding auxiliary clamps			●
	Extension base			●
Remote Controller	Remote controller without batteries	●	●	●
Power Supply & Cables	Power adapter	●	●	●
	Power cable	●	●	●
	HDMI cable	●	●	●
	USB data cable	●	●	●
Others	Bottom light	●	●	●
	Prepared microscope slider*5	●	●	●
	Metal clips*2	●	●	●
	64G SD card	○	○	○
	Card reader	●	●	●
	Cleaning cloth	●	●	●
	User manual	●	●	●

Note: ● Standard Outfit, ○ Optional

System Diagram



BLM1-210A



BLM1-210C

3. BLM1-310A LCD Digital Microscope



Introduction

BLM1-310A is a newly developed LCD digital microscope. It has 10.1 inch LCD screen and 4.0MP built-in digital camera. The angle of the LCD screen can be adjusted 180°, users can find a comfortable position. The column also can be adjusted backward and forward, can provide larger operation space. The base is specially designed for cellphone repairment and electronics inspections, there are positions for small screws and parts.

Feature

1. 10.1 inch LCD screen, high definition and has a very nice display result.
2. 4.0MP built-in camera with high speed and high resolution features.

3. The angle of the LCD screen can be adjusted 180°, users can find a comfortable position.
4. The column also can be adjusted backward and forward, can provide larger operation space.
5. The base is specially designed for cellphone repairment and electronics inspections, there are positions for small screws and parts.
6. The stand has been equipped with 2 universal LED lamps, brightness adjustable.
7. An UV lens has been equipped on the microscope, can protect the microscope prevent stray light.
8. Remote controller can be used to adjust the microscope.
9. Pictures and videos can be saved in the SD card.
10. The microscope can support HDMI and USB output.
11. Measurement software is also available.

Application

BLM1-310A LCD digital microscope can be used for circuit board repair and inspection, semiconductor inspection, SMT work, electronics inspection, dissection, coin collecting, gemology and gemstone setting, engraving, repair and inspection of small parts.

Specification

Image sensor	4 Mega Pixels HD Sensor
Video output	24FPS@UHD 2880X2160; 60FPS/30FPS@FHD 1920X1080; 120FPS@HD1280X720
Video format	MP4
Magnification ratio	Up to 300X (27 inch HDMI monitor output)
Photo resolution	Max 24M (5600*4200)
Photo format	JPG
Minimum focus distance	5cm
Frame rate	Max 120f/s (under 600 Lux Brightness& HDP120)
Storage	Micro-SD card up to 64G (not included, Class10 high-speed card is recommended)
PC support	Yes, for Windows XP/7/8/10/11, PC software with Measurement
Mobile phone & tablet terminal	Support WiFi connection
HDMI Output	Support
Power source	USB 5V 2A DC
Stand size	18*20*32cm
Screen size & Resolution	10.1 inch, 1280*800
Language support	10 types language, English/ French/ German/ Italian/ Portuguese/ Spanish/ Russian/ Simplified Chinese/ Traditional Chinese/ Japanese
Package contents	Microscope monitor, UV filter(assembled), Base (with light), Repair mat, Beam, Column, Tool holder, Power cable, HDMI cable, USB cable, Power adapter, Remote, Users Manual

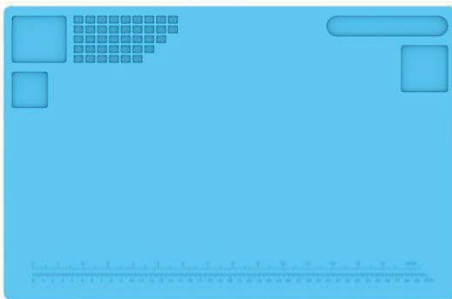
Packing information



Base



Microscope Monitor



Repair mat



Beam



Column



Tool holder



Remote



Power Adapter



Power cable

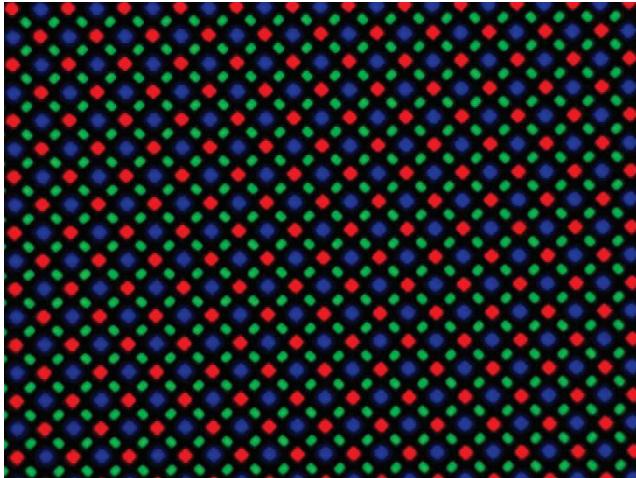
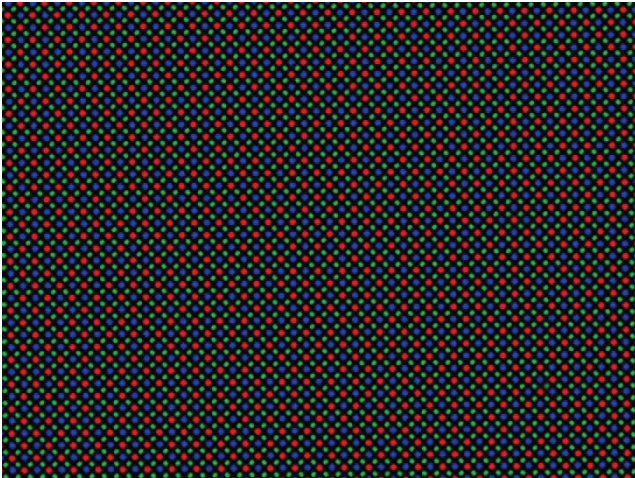


HDMI cable



USB cable

Sample Images



4. BLM1-370 Digital Microscope



BLM1-370

Introduction

BLM1 series digital microscope features a compact and beautiful exterior design, integrating continuous zoom optical module and high-definition camera. The screen, camera and ring lamp are all powered by one power supply, avoiding the mess of mixed wires. The customers can freely choose with or without a screen according to the needs. Compared with traditional optical microscopes, BLM1 series with display and built-in camera, is easy to observe and operate, also available for digital magnification and data storage. We are committed to providing users with easy and comfortable operating experience by reducing the tiredness caused by long time operations. BLM1-370 is applied to educational market, with more available features.

Feature

1. Screen with adjustable tilting angle



The screen tilting angle is adjustable and ergonomic, providing a comfortable observation experience for different users.

2. Multiplex signals collection



BLM1-370 with multi-channel signals transmission, support for USB and HDMI output at the same time without interference on each other.

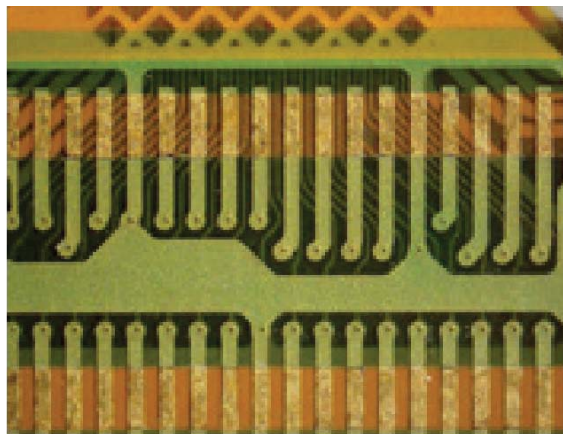
3. Adjustable zoom lens

BLM1-370 has a zoom range of 0.7X-5X and 7:1 continuous magnification. The large stroke focusing mechanism provides a wider workspace with a 225mm focusing range and a maximum working distance of 170mm, meeting the measurement needs of samples at different heights.

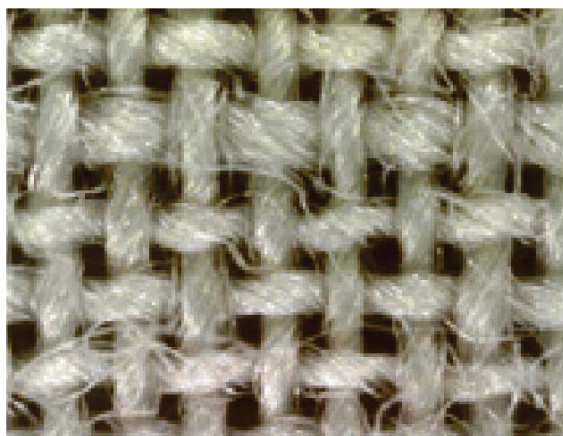
Application



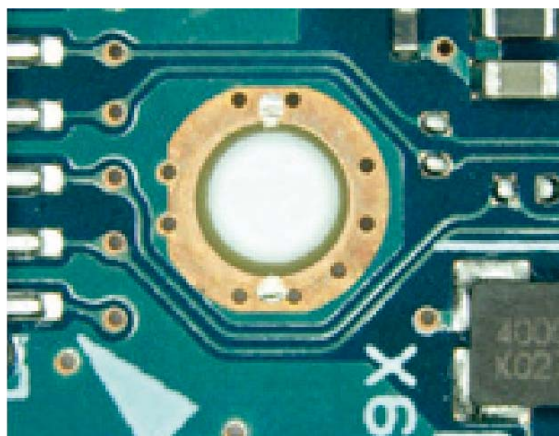
Plant Morphology



FPCB



Fiber



PCB

Specification

Item	Specification		BLM1-370A	BLM1-370B
Objectives	Main Objectives	1X objective, WD=105mm	●	●
		1.4X objective, WD=100mm (not suitable for LED ring lamp with two circles)	○	○
		0.5X objective, WD=170mm (not suitable for LED ring lamp with two circles)	○	○

Microscope Body	Lens body set, continuous zoom objective 0.7X~5X. Built-in camera module, with real-time HDR and OSD manual, sensor size: 1/3 ", COMS 4M, RAM 16G, support for SD card. Output interface: HDMI, Mini USB	●	
	Lens body set, IPS 10 inch high definition touch screen (-5°~15° tilting). Continuous zoom objective 0.7X~5X. Built-in camera module, with real-time HDR and OSD manual, sensor size: 1/3 ", COMS 4M, RAM 16G, support for SD card. Output interface: HDMI, Mini USB		●
Illumination	LED ring lamp with 56 bulbs, intensity adjustable, color temperature 5000-5500K	●	●
	LED ring lamp with two circles, intensity separately adjustable, color temperature 5000-5500K	○	○
Base	Large flat base, lifting range 225mm	●	●
	Large flat base, lifting range 225mm. LED with adjustable brightness	○	○
Other	12V/3.3A switch power adapter (elbow)	●	●
	5m HDMI cable	○	○
	1.5m USB cable	○	○
	32 GB SD storage card	○	○
	Internal hexagonal Spanner M2	●	●
	Internal hexagonal Spanner M4	●	●

Note: ● Standard Outfit, ○ Optional

Accessories

1. Main objectives

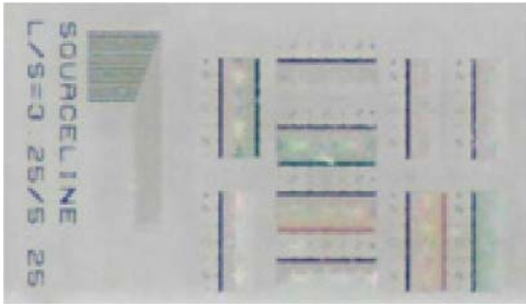


There are different main objectives to expand zoom range, for observing the sample in full-scale or in detail.

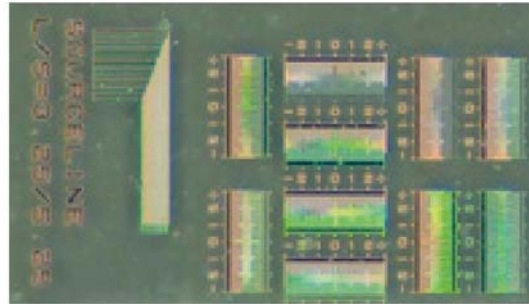
2. LED ring lamp with two circle bulbs



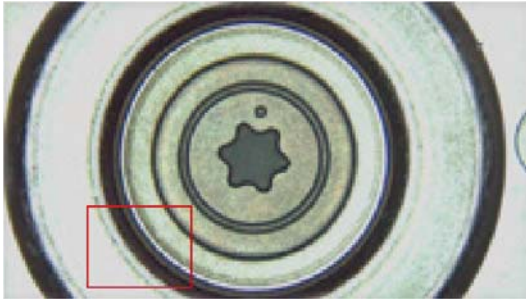
There are separated switches for intensity control of inner and outer circle lamp. Outer circle as oblique illumination, is available to present more details. Inner circle as near coaxial light, improve the accuracy and reproducibility of the image.



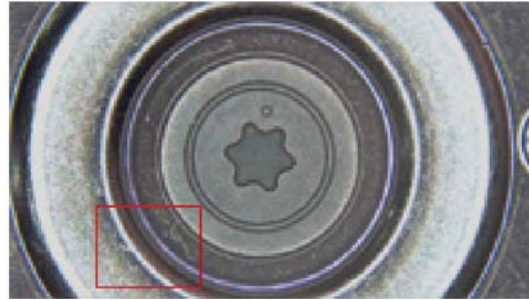
Cellphone LCD: under inner light



under outer circle light

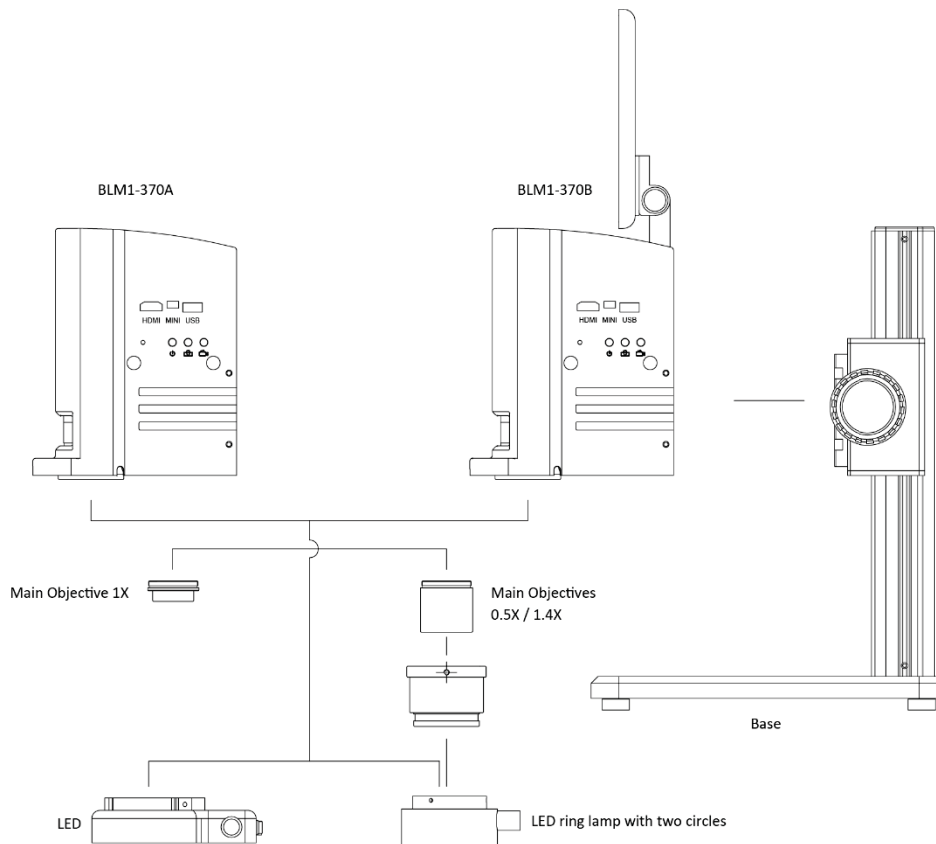


HDD Disc: under outer circle light

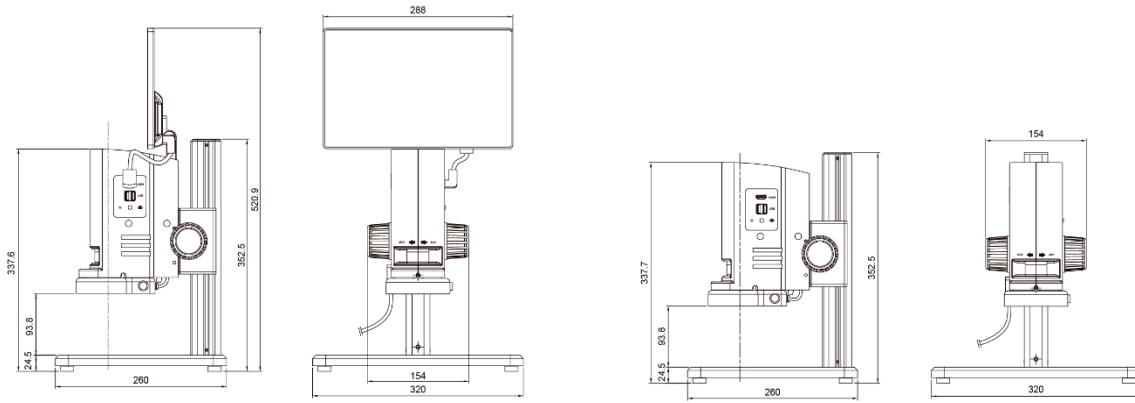


under inner circle light

System Diagram



Dimension



Unit:mm

5. BLM1-380 Digital Microscope



BLM1-380

Introduction

BLM1 series digital microscope features a compact and beautiful exterior design, integrating continuous zoom optical module and high-definition camera. The screen, camera and ring lamp are all powered by one power supply, avoiding the mess of mixed wires. The customers can freely choose with or without a screen according to the needs. Compared with traditional optical microscopes, BLM1 series with display and built-in camera, is easy to observe and operate, also available for digital magnification and data storage. We are committed to providing users with easy and comfortable operating experience by reducing the tiredness caused by long time operations. BLM1-380 is applied to industrial market, with better product reliability.

Feature

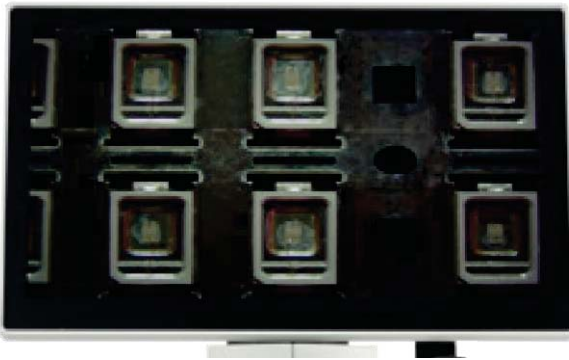
1. Larger field of view

BLM1-380 maximizes the theoretical value of the imaging range of the internal optical system. The actual field of view increased by more than 33% compared to BLM1-370, resulting a larger field of view and wider observation range.

2. More reasonable working distance

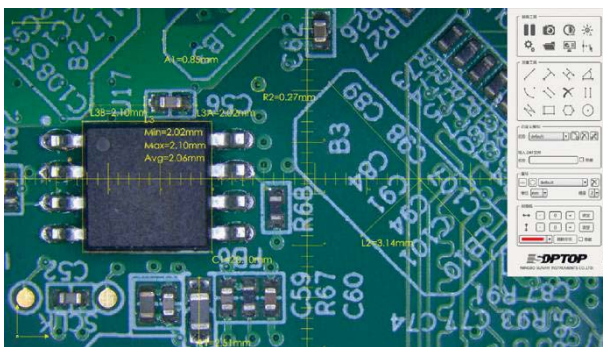
The working distance of 0.5X main objective shortens to 110mm, reducing work tiredness caused by excessive working distance. The users can fully place their elbows on the workbench to optimize the operating feel.

3. High frame digital camera



2.0 mega pixels camera with 12-inch HD display (1920*1080, 60fps), low image noise and high contrast ratio, presents smooth and un-delayed imaging under high resolution.

4. Software



With simple but functional software, BLM1-380 is able to take photos and video, and also available to be upgraded with measuring function if the customers need.

Basic measuring function, can be used to measure length, perimeter, area, angle etc. The line width, color and typeface are able to be personalized. The flat and practical user interface, is easy and effective to be operated.

5. Data Storage

External USB disk (2.0), supporting up to 128G, real-time image storage, meeting the need of storage and recording.



Photograph type

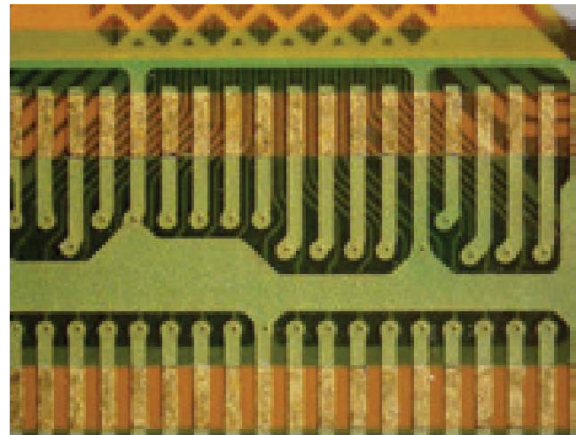


Measure type

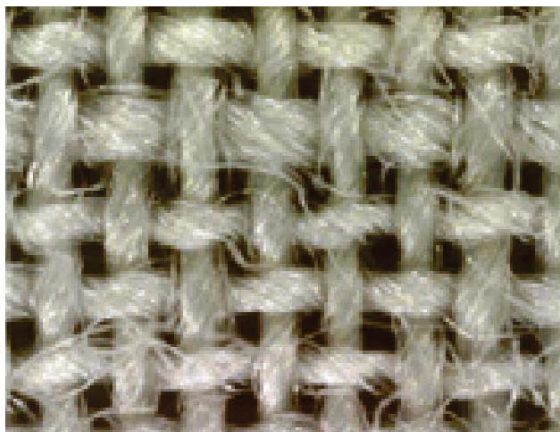
Application



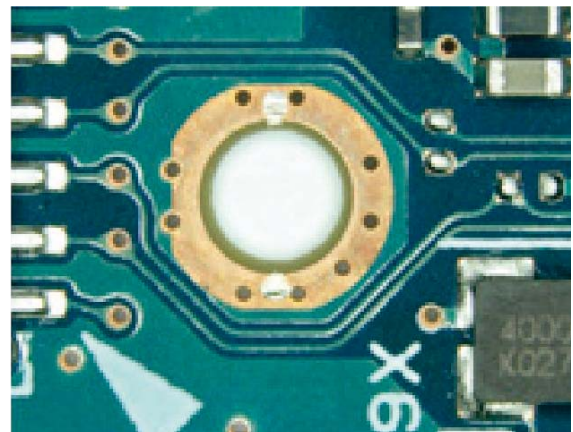
Plant Morphology



FPCB



Fiber



PCB

Specification

Item	Specification	BLM1-380A	BLM1-380B	BLM1-380C	BLM1-380D	
Objectives	Main Objectives					
Microscope Body	Digital lens body set, continuous zoom objective 0.7X-5X. Built-in camera module, sensor size: 1/2 ", COMS 2M, frame rate 60fps, external USB storage (up to 128G), with power indicator light and photography button. Output interface: HDMI, USB2.0, support for wireless mouse	●	●	●	●	
	Digital lens body set, continuous zoom objective 0.7X-5X. Built-in camera module with measuring software, sensor size: 1/2 ", COMS 2M, frame rate 60fps, external USB storage (up to 128G), with power indicator light and photography button. Output interface: HDMI, USB2.0, support for wireless mouse		●			
	Digital lens body set, 12-inch high-definition LCD (-5 ° ~15 ° tilting), resolution 1920X1080, with HDMI interface. Continuous zoom objective 0.7X-5X. Built-in camera module, sensor size: 1/2 ", COMS 2M, frame rate 60fps, external USB storage (up to 128G), with power indicator light and photography button. Output interface: HDMI, USB2.0, support for wireless mouse				●	
	Digital lens body set, 12-inch high-definition LCD (-5 ° ~15 ° tilting), resolution 1920X1080, with HDMI interface. Continuous zoom objective 0.7X-5X. Built-in camera module with measuring software, sensor size: 1/2 ", COMS 2M, frame rate 60fps, external USB storage (up to 128G), with power indicator light and photography button. Output interface: HDMI, USB2.0, support for wireless mouse					●
Illumination	LED ring lamp with 56 bulbs, intensity adjustable, color temperature 5000-5500K	●	●	●	●	
	LED ring lamp with two circles, intensity separately adjustable, color temperature 5000-5500K	○	○	○	○	
Base	Large flat base, lifting range 225mm	●	●	●	●	
	Large flat base, lifting range 225mm. LED with adjustable brightness	○	○	○	○	
Other	12V/3.3A switch power adapter with power switch connection cable	●	●	●	●	
	5m HDMI cable	●	●			

0.2m HDMI cable			●	●
32 GB USB disk	○	○	○	○
Wireless mouse	○	○	○	○
Internal hexagonal Spanner M2	●	●	●	●
Internal hexagonal Spanner M3	●	●	●	●

Note: ● Standard Outfit, ○ Optional

Accessories

1. Main objectives

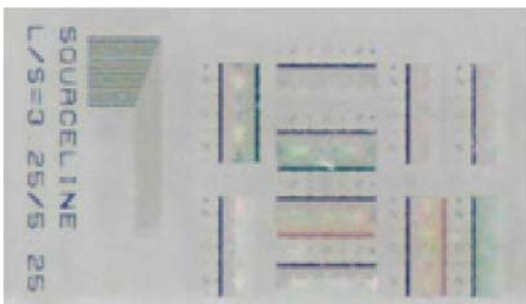


There are different main objectives to expand zoom range, for observing the sample in full-scale or in detail.

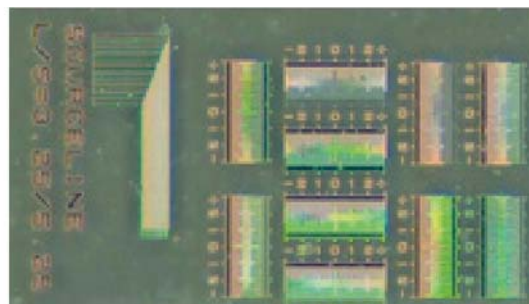
2. LED ring lamp with two circle bulbs



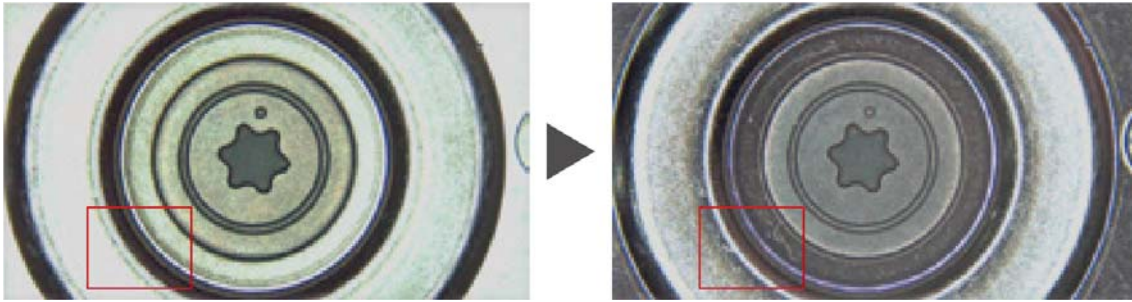
There are separated switches for intensity control of inner and outer circle lamp. Outer circle as oblique illumination, is available to present more details. Inner circle as near coaxial light, improve the accuracy and reproducibility of the image.



Cellphone LCD: under inner light



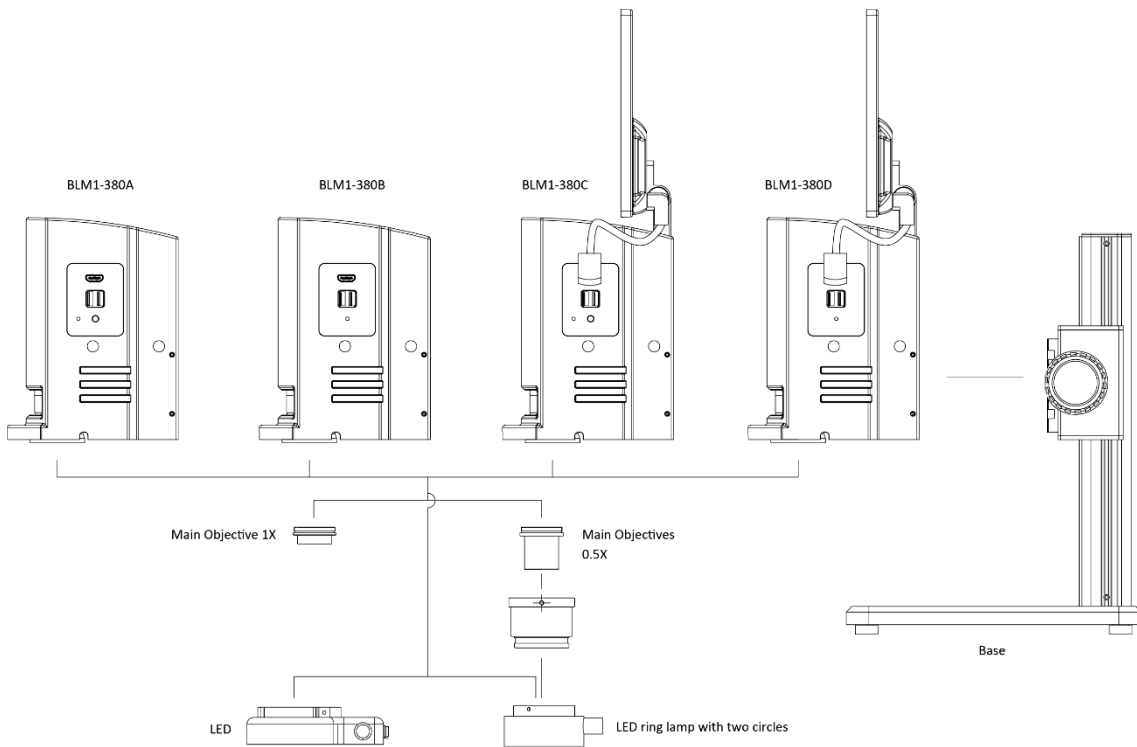
under outer circle light



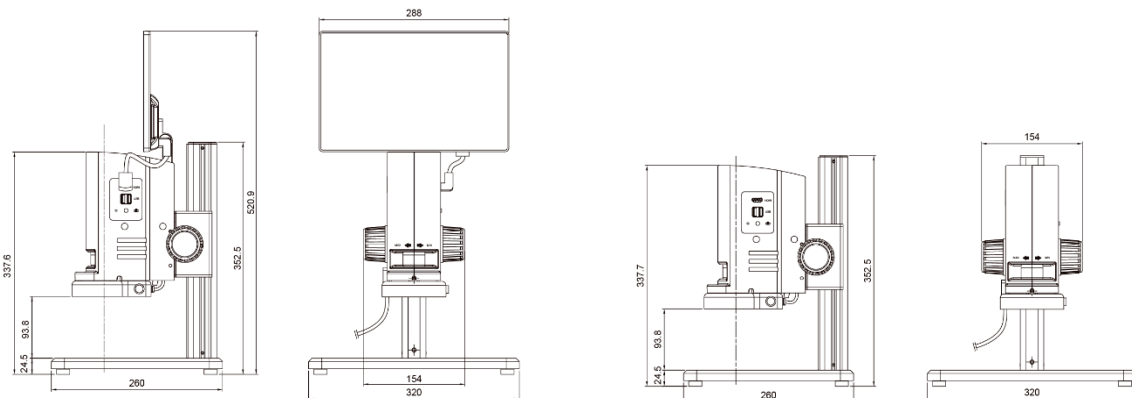
HDD Disc: under outer circle light

under inner circle light

System Diagram



Dimension



Unit: mm

6. BLM1-480 Motor Zoom Smart Measuring Video Microscope



BLM1-480A

Features

1. High precision images

Apochromatic optical system. Ultra 4K image. 3840*2160 4K ultra high resolution, 60fps, no delay. Supports HDMI and PC output at the same time.

2. Zoom ratio

0.3-3.0X standard zoom body, 1:10 large zoom ratio. Zoom modes: motor zoom and manual knob zoom. Smart cruise scanning with accurate magnification.

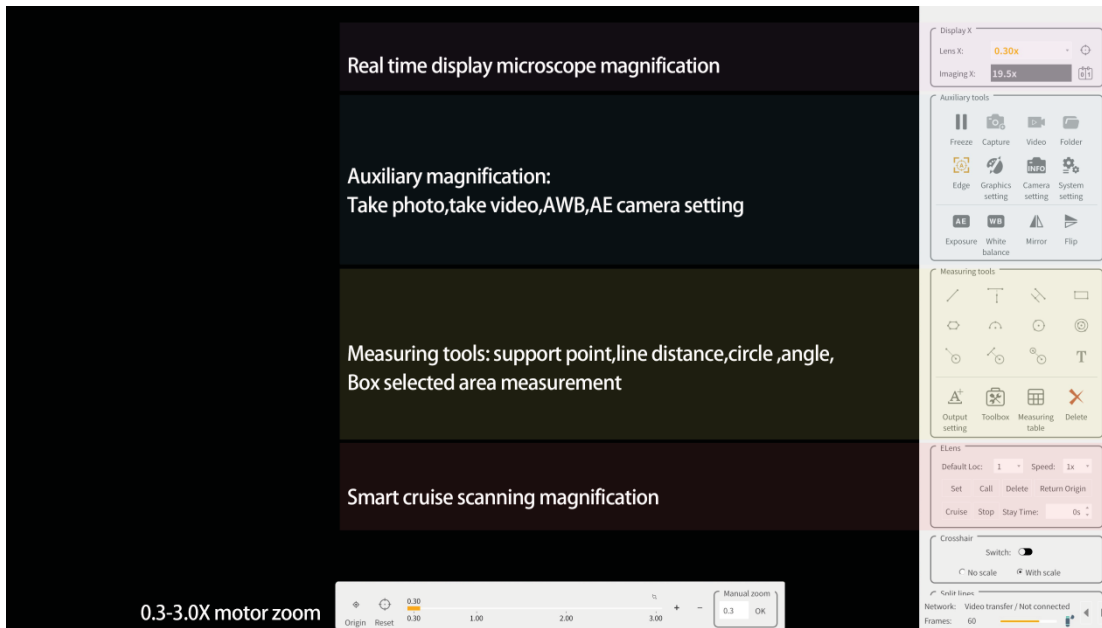
3. Integrated design

Integrated body design with one switch and one power supply, the operation is convenient.

4. Measurement function

Magnification shows in real-time, and measuring in real-time. Support box selection for faster and higher accuracy measurement. Support automatic edge finding for more accurate measurement.

Operation windows

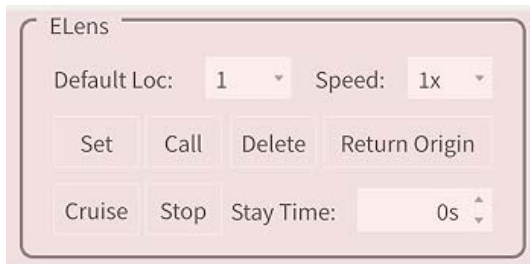


Main Function



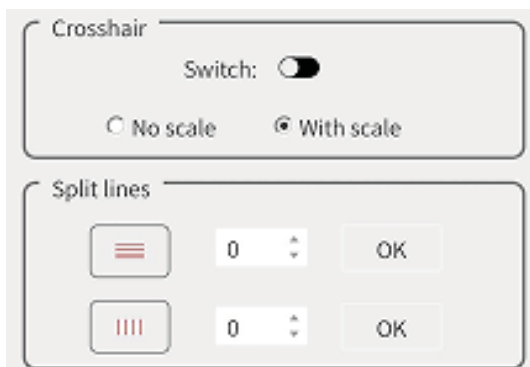
Magnification display

Lens and total imaging magnification show in real-time



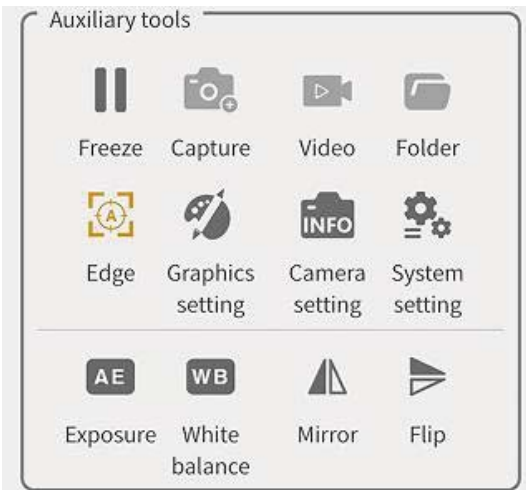
Motor setting

Ten pre-setting positions cruise scanning



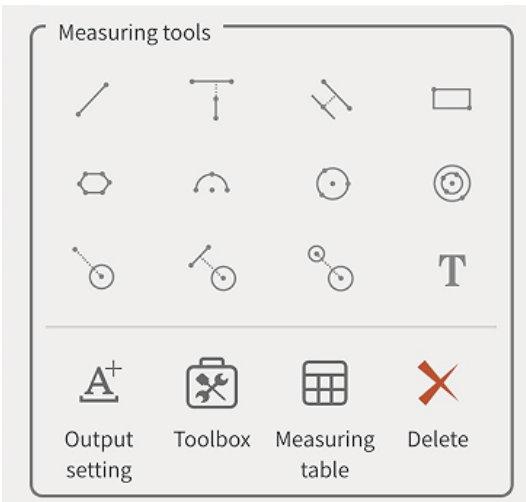
Reticle or scale

The users can add multiple auxiliary lines as needed, with or without scales



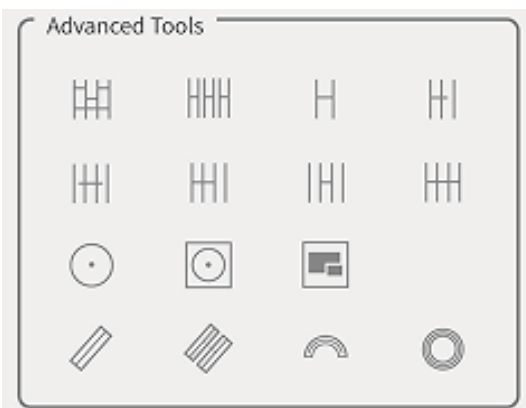
Auxiliary tools

Capture, video, save pictures and videos to USB disk or PC, automatic exposure, automatic white balance, camera setting, etc.



Measuring tools

Support 2D measuring, box selected area measurement, automatic edge finding. Precision can reach micron.



Advanced tools

The users can choose different advanced measuring tools to meet special needs.

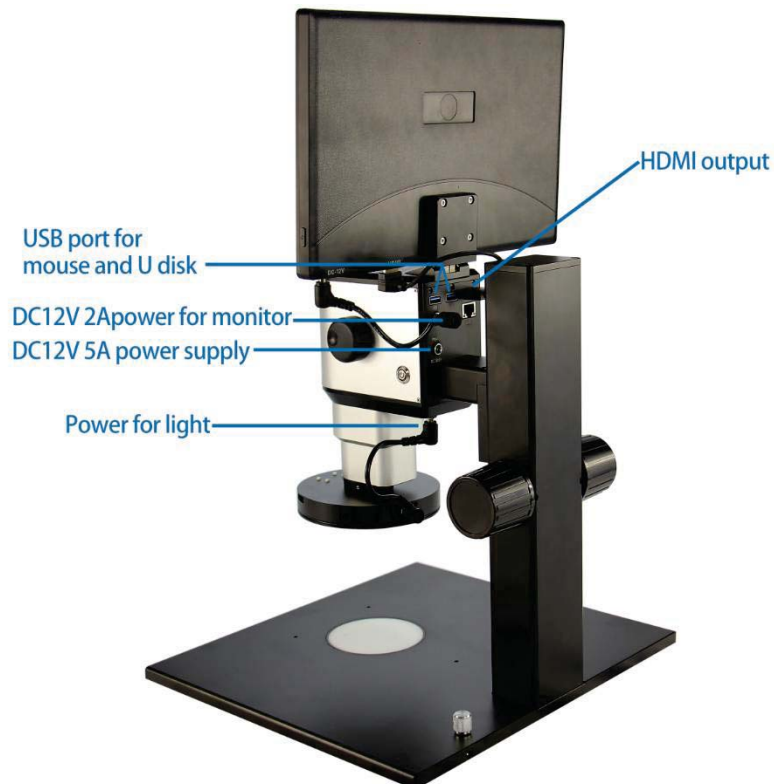
Application

BLM1-480 Series Motor Zoom Smart Measuring Video Microscope are widely used in industrial inspection, auto system, electronic communication, semiconductor, biomedical and scientific research, etc.

Product Details



Integrated body design with one switch and only one power supply, solving the problem of too much cables of traditional video microscopes. Ergonomics design. Accompany with 11.6-inch 1080P monitor, angle adjustable.



Specification

BLM1-480A, BLM1-480B, BLM1-480C

Item	Specification	BLM1-480A	BLM1-480B	BLM1-480C
Optical System	Apochromatic optical system	●	●	●
Zoom Lens	Optical zoom magnification: 0.3X-3.0X	●	●	●
Zoom mode	Motor zoom & manual knob zoom	●	●	●
Zoom ratio	1:10	●	●	●
Built-in Camera	Built-in camera with HDMI output and Network interface, two USB port for mouse and USB disk. Resolution: 3840*2160, frame: 60fps, sensor: 1/1.8", pixel size: 2.0um*2.0um. Support measuring of point, line, parallel lines, circle, arc, angle, rectangle, polygon etc. Take photo and video to save local or network.	●	●	●
Monitor	11.6-inch 1080P HDMI monitor, brightness adjustable	●	●	●
Auxiliary Lens	1.0X Auxiliary Objective	●	●	●
	0.3X Auxiliary Objective	○	○	○
	0.4X Auxiliary Objective	○	○	○
	0.5X Auxiliary Objective	○	○	○
	0.6X Auxiliary Objective	○	○	○
	0.75X Auxiliary Objective	○	○	○
	1.5X Auxiliary Objective	○	○	○
	2.0X Auxiliary Objective	○	○	○
	4K Apochromatic objective, 0.5X/NA=0.054, WD=180mm	○	○	○
	4K Apochromatic objective, 1X/ NA=0.107, WD=100mm	○	○	○
4K Apochromatic objective, 2X/ NA=0.214, WD=38mm	○	○	○	
Infinite LWD Plan Achromatic Metallurgical Objective (MA200A)	5X/ NA=0.12, WD=26.1mm	○	○	○
	10X/ NA=0.25, WD=20.2mm	○	○	○
	20X/ NA=0.4, WD=8.8mm	○	○	○
	40X/ NA=0.6, WD=3.98mm	○	○	○
	50X/ NA=0.7, WD=3.68mm	○	○	○
	60X/ NA=0.75, WD=1.22mm	○	○	○
	60X/ NA=0.75, WD=3.18mm	○	○	○
	80X/ NA=0.8, WD=1.25mm	○	○	○
100X/ NA=0.85, WD=0.4mm	○	○	○	
Infinite LWD Plan Apochromatic Objectives (LWD M APO200A)	2X/ NA=0.055, WD=34.6mm	○	○	○
	3.5X/ NA=0.1, WD=40.93mm	○	○	○
	5X/ NA=0.13, WD=44.5mm	○	○	○
	10X/ NA=0.28, WD=34mm	○	○	○
	20X/ NA=0.29, WD=31mm	○	○	○
50X/ NA=0.42, WD=20.1mm	○	○	○	
Infinite LWD Plan Apochromatic	2X/ NA=0.075, WD=50mm	○	○	○
	4X/ NA=0.15, WD=36mm	○	○	○

Objectives (LWD M APO200B)	4.5X/ NA=0.18, WD=38mm	○	○	○
	20X/ NA=0.35, WD=29mm	○	○	○
Coaxial light Device	Coaxial device, does not include light source	○	○	○
	Polarized coaxial device, does not include light source	○	○	○
Ring Light	BAL-80A LED Ring light, brightness adjustable	○	○	○
	BAL-52AP LED polarizing ring light, brightness adjustable	○	○	○
	BAL-52ASL LED side ring light, brightness adjustable	○	○	○
	BAL-228A Four-zone lighting control separately big area LED ring light	●	●	●
	BAL-228AG LED four-zone ring light with frosted glass	○	○	○
	BAL-16P LED polarizing ring light, brightness adjustable	○	○	○
BAL-52A LED Ring light, brightness adjustable	○	○	○	
Back Light	BTL-60A LED back light	○	○	○
Point Light	BPL-3A LED point light, 3W, brightness adjustable.	○	○	○
	BPL-3MC LED multi color point light, 3W, white, purple, blue, yellow, red, green and mixed light, brightness adjustable	○	○	○
	BPL-4A LED point light with numerically adjustable light adapter, 4W, brightness adjustable	○	○	○
Bar Light	BBL-5A bar LED illuminator, 60 LED, 12V/5W	○	○	○
Cold Light Source	BSL-3B LED light source with dual goose neck light guide, 6.5W	○	○	○
	BSL-15A-2 Cold LED light source with Dual Light Guide, 15W LED lamp	○	○	○
	BSL2-150A-2 Cold light source with Dual Light Guide, 21V/150W Halogen lamp	○	○	○
Stage	BMS-302 X-Y moving stage	○	○	○
	BMS-303 X-Y moving stage	○	○	○
	BMS-311 X-Y measuring stage	○	○	○
	BMS-316A X-Y measuring stage	○	○	○
	BMS-316B X-Y measuring stage	○	○	○
	BMS-400A large working stage	○	○	○
BMS-260A XY working stage	○	○	○	
Stand and focus Arm	BA1 Round type column plain stand with coarse focus arm. Stroke: 50mm.	●	○	○
	BA2 Round type column plain stand with coarse focus arm, transmitted 12V/5W LED illumination, brightness adjustable. Stroke: 50mm.	○	●	○
	BA3 Round type column plain stand with coarse and fine focus arm. Stroke: 67mm, fine precision: 0.002mm.	○	○	○
	BA4 Round type column plain stand with coarse and fine focus arm, transmitted 12V/5W LED illumination, brightness adjustable. Stroke: 67mm, fine precision: 0.002mm.	○	○	○

BA5 Square type column plain stand with coarse focus arm. Stroke: 150mm.	○	○	●
BA6 Square type column plain stand with coarse focus arm, transmitted 12V/5W LED illumination, brightness adjustable. Stroke: 150mm.	○	○	○
BA7 Square type column plain stand with coarse and fine focus arm. Stroke: 260mm, fine precision: 0.002mm.	○	○	○
BA8 Square type column plain stand with coarse and fine focus arm, transmitted 12V/5W LED illumination, brightness adjustable. Stroke: 260mm, fine precision: 0.002mm.	○	○	○
BA9 multi-angle column plain stand with coarse focus arm. Stroke: 60mm.	○	○	○
BA10 multi-angle column plain stand with coarse and fine focus arm. Stroke: 60mm, fine precision: 0.002mm.	○	○	○
BA11 universal boom stand with coarse focus arm. Column height: 320mm, horizontal column length: 340mm, Φ32mm, 360° rotatable. Base size: 330mm*300mm. Stroke: 50mm.	○	○	○
BA12 universal boom stand with coarse and fine focus arm. Column height: 320mm, horizontal column length: 340mm, Φ32mm, 360° rotatable. Base size: 330mm*300mm. Stroke: 65mm, fine precision: 0.002mm.	○	○	○
BA13 Round type column large plain stand with coarse focus arm. Column height: 320mm, Φ25mm, stroke: 50mm, base size: 380mm*260mm. Gross weight: 1.5kg.	○	○	○
BFA-1 coarse focus arm. Stroke: 50mm.	○	○	○
BFA-2 coarse and fine focus arm. Stroke: 65mm, fine precision: 0.002mm.	○	○	○
BFA-3 multi-angle coarse focus arm, angle adjustable. Stroke: 50mm.	○	○	○
BFA-4 multi-angle coarse and fine focus arm, angle adjustable. Stroke: 60mm, fine precision: 0.002mm.	○	○	○
BFA-5 electric coarse and fine focus arm, supporting manual focusing and electric focusing. It has 5 preset positions, paired with 5 different magnification objectives. Stroke: 65mm, fine precision: 0.005mm.	○	○	○
BFA-6 N interface coarse focus arm. Stroke: 50mm.	○	○	○
BFA-7 N interface coarse and fine focus arm. Stroke: 65mm, fine precision: 0.002mm.	○	○	○

Note: ●Standard Outfit, ○Optional

BLM1-480D, BLM1-480E, BLM1-480F

Item	Specification	BLM1-480D	BLM1-480E	BLM1-480F
Optical System	Apochromatic optical system	●	●	●

Zoom Lens	Optical zoom magnification: 0.3X-3.0X	●	●	●
Zoom mode	Motor zoom & manual knob zoom	●	●	●
Zoom ratio	1:10	●	●	●
Built-in Camera	Built-in camera with HDMI output and Network interface, two USB port for mouse and USB disk. Resolution: 3840*2160, frame: 60fps, sensor: 1/1.8", pixel size: 2.0um*2.0um. Support measuring of point, line, parallel lines, circle, arc, angle, rectangle, polygon etc. Take photo and video to save local or network.	●	●	●
Monitor	11.6-inch 1080P HDMI monitor, brightness adjustable	●	●	●
Auxiliary Lens	1.0X Auxiliary Objective	●	●	●
	0.3X Auxiliary Objective	○	○	○
	0.4X Auxiliary Objective	○	○	○
	0.5X Auxiliary Objective	○	○	○
	0.6X Auxiliary Objective	○	○	○
	0.75X Auxiliary Objective	○	○	○
	1.5X Auxiliary Objective	○	○	○
	2.0X Auxiliary Objective	○	○	○
	4K Apochromatic objective, 0.5X/NA=0.054, WD=180mm	○	○	○
	4K Apochromatic objective, 1X/ NA=0.107, WD=100mm	○	○	○
4K Apochromatic objective, 2X/ NA=0.214, WD=38mm	○	○	○	
Infinite LWD Plan Achromatic Metallurgical Objective (MA200A)	5X/ NA=0.12, WD=26.1mm	○	○	○
	10X/ NA=0.25, WD=20.2mm	○	○	○
	20X/ NA=0.4, WD=8.8mm	○	○	○
	40X/ NA=0.6, WD=3.98mm	○	○	○
	50X/ NA=0.7, WD=3.68mm	○	○	○
	60X/ NA=0.75, WD=1.22mm	○	○	○
	60X/ NA=0.75, WD=3.18mm	○	○	○
	80X/ NA=0.8, WD=1.25mm	○	○	○
100X/ NA=0.85, WD=0.4mm	○	○	○	
Infinite LWD Plan Apochromatic Objectives (LWD M APO200A)	2X/ NA=0.055, WD=34.6mm	○	○	○
	3.5X/ NA=0.1, WD=40.93mm	○	○	○
	5X/ NA=0.13, WD=44.5mm	○	○	○
	10X/ NA=0.28, WD=34mm	○	○	○
	20X/ NA=0.29, WD=31mm	○	○	○
50X/ NA=0.42, WD=20.1mm	○	○	○	
Infinite LWD Plan Apochromatic Objectives (LWD M APO200B)	2X/ NA=0.075, WD=50mm	○	○	○
	4X/ NA=0.15, WD=36mm	○	○	○
	4.5X/ NA=0.18, WD=38mm	○	○	○
	20X/ NA=0.35, WD=29mm	○	○	○
Coaxial light Device	Coaxial device, does not include light source	○	○	○
	Polarized coaxial device, does not include light source	○	○	○
Ring Light	BAL-80A LED Ring light, brightness adjustable	○	○	○

	BAL-52AP LED polarizing ring light, brightness adjustable	○	○	○
	BAL-52ASL LED side ring light, brightness adjustable	○	○	○
	BAL-228A Four-zone lighting control separately big area LED ring light	●	●	●
	BAL-228AG LED four-zone ring light with frosted glass	○	○	○
	BAL-16P LED polarizing ring light, brightness adjustable	○	○	○
	BAL-52A LED Ring light, brightness adjustable	○	○	○
Back Light	BTL-60A LED back light	○	○	○
Point Light	BPL-3A LED point light, 3W, brightness adjustable.	○	○	○
	BPL-3MC LED multi color point light, 3W, white, purple, blue, yellow, red, green and mixed light, brightness adjustable	○	○	○
	BPL-4A LED point light with numerically adjustable light adapter, 4W, brightness adjustable	○	○	○
Bar Light	BBL-5A bar LED illuminator, 60 LED, 12V/5W	○	○	○
Cold Light Source	BSL-3B LED light source with dual goose neck light guide, 6.5W	○	○	○
	BSL-15A-2 Cold LED light source with Dual Light Guide, 15W LED lamp	○	○	○
	BSL2-150A-2 Cold light source with Dual Light Guide, 21V/150W Halogen lamp	○	○	○
Stage	BMS-302 X-Y moving stage	○	○	○
	BMS-303 X-Y moving stage	○	○	○
	BMS-311 X-Y measuring stage	○	○	○
	BMS-316A X-Y measuring stage	○	○	○
	BMS-316B X-Y measuring stage	○	○	○
	BMS-400A large working stage	○	○	○
	BMS-260A XY working stage	○	○	○
Stand and focus Arm	BA1 Round type column plain stand with coarse focus arm. Stroke: 50mm.	○	○	○
	BA2 Round type column plain stand with coarse focus arm, transmitted 12V/5W LED illumination, brightness adjustable. Stroke: 50mm.	○	○	○
	BA3 Round type column plain stand with coarse and fine focus arm. Stroke: 67mm, fine precision: 0.002mm.	○	○	○
	BA4 Round type column plain stand with coarse and fine focus arm, transmitted 12V/5W LED illumination, brightness adjustable. Stroke: 67mm, fine precision: 0.002mm.	○	○	○
	BA5 Square type column plain stand with coarse focus arm. Stroke: 150mm.	○	○	○
	BA6 Square type column plain stand with coarse focus arm, transmitted 12V/5W LED illumination, brightness adjustable. Stroke: 150mm.	●	○	○

	BA7 Square type column plain stand with coarse and fine focus arm. Stroke: 260mm, fine precision: 0.002mm.	○	●	○
	BA8 Square type column plain stand with coarse and fine focus arm, transmitted 12V/5W LED illumination, brightness adjustable. Stroke: 260mm, fine precision: 0.002mm.	○	○	●
	BA9 multi-angle column plain stand with coarse focus arm. Stroke: 60mm.	○	○	○
	BA10 multi-angle column plain stand with coarse and fine focus arm. Stroke: 60mm, fine precision: 0.002mm.	○	○	○
	BA11 universal boom stand with coarse focus arm. Column height: 320mm, horizontal column length: 340mm, Φ32mm, 360° rotatable. Base size: 330mm*300mm. Stroke: 50mm.	○	○	○
	BA12 universal boom stand with coarse focus arm. Column height: 320mm, horizontal column length: 340mm, Φ32mm, 360° rotatable. Base size: 330mm*300mm. Stroke: 65mm, fine precision: 0.002mm.	○	○	○
	BA13 Round type column large plain stand with coarse focus arm. Column height: 320mm, Φ25mm, stroke: 50mm, base size: 380mm*260mm. Gross weight: 1.5kg.	○	○	○
	BFA-1 coarse focus arm. Stroke: 50mm.	○	○	○
	BFA-2 coarse and fine focus arm. Stroke: 65mm, fine precision: 0.002mm.	○	○	○
	BFA-3 multi-angle coarse focus arm, angle adjustable. Stroke: 50mm.	○	○	○
	BFA-4 multi-angle coarse and fine focus arm, angle adjustable. Stroke: 60mm, fine precision: 0.002mm.	○	○	○
	BFA-5 electric coarse and fine focus arm, supporting manual focusing and electric focusing. It has 5 preset positions, paired with 5 different magnification objectives. Stroke: 65mm, fine precision: 0.005mm.	○	○	○
	BFA-6 N interface coarse focus arm. Stroke: 50mm.	○	○	○
	BFA-7 N interface coarse and fine focus arm. Stroke: 65mm, fine precision: 0.002mm.	○	○	○

Note: ●Standard Outfit, ○Optional

Optical Parameter

Model	BLM1-480	
Lens	Optical Magnification	0.3-3.0X
	Total Magnification	10-99.8X
	Zoom ratio	1:10

	Working Distance	86mm
	FOV	25.6mm*14.4mm-2.56mm*1.44mm
	Zoom modes	Motor zoom and manual knob zoom
Camera	Sensor	1/1.8"
	Pixel size	2.0μm*2.0μm
	Resolution	3840*2160
	Frame	60fps
	Output	HDMI
	Network interface	1000Mb
	USB ports	USB 3.0 *2
	Storage function	Photo and video save local or network
	Measuring function	Magnification shows in real-time, and measuring in real-time. Support box selection for faster and higher accuracy measurement. Support automatic edge finding for more accurate measurement.
Monitor	Monitor	11.6-inch 1080P HDMI monitor , brightness adjustable

Accessories



4K objectives



Auxiliary objectives



Coaxial device



Polarized coaxial



BLM1-480A



BLM1-480B



BLM1-480C



BLM1-480D

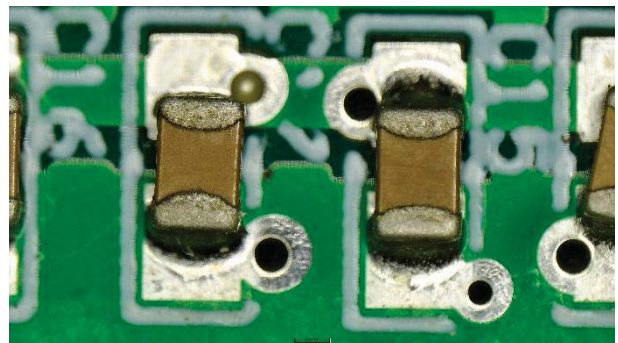
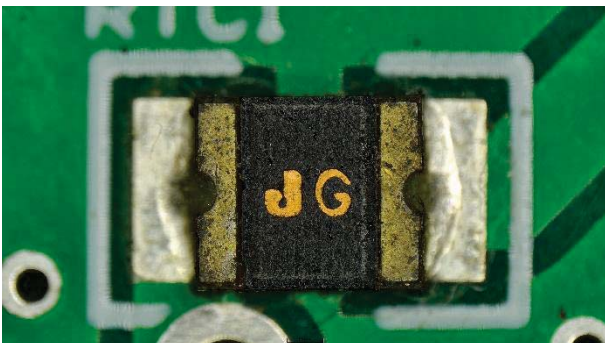
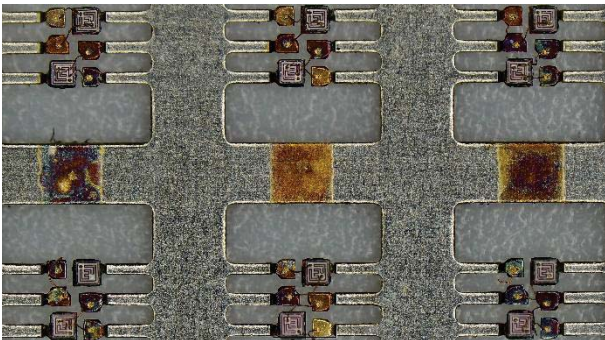


BLM1-480E with coaxial device

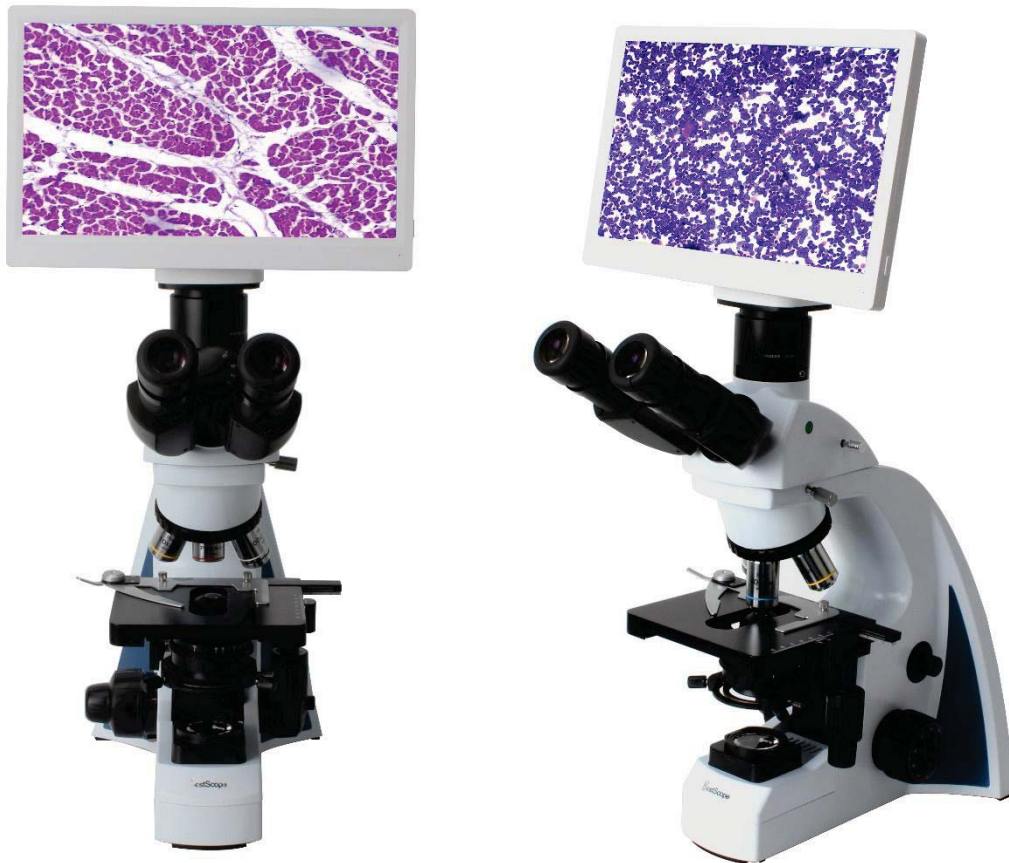


BLM1-480E with coaxial device and APO objective

Sample Images



7. BLM2-241 LCD Digital Biological Microscope



Introduction

BLM2-241 digital LCD biological microscope has a built-in 6.0MP high sensitive camera and 11.6" 1080P full HD retina LCD screen. Both traditional eyepieces and an LCD screen can be used for convenient and comfortable viewing. The microscope makes the observation more comfortable and thoroughly resolves the fatigue caused by using a traditional microscope for a long time.

BLM2-241 not only feature HD LCD display to reverting genuine photo and video, but also feature quick and easy snapshots, short videos and measurement. It has integrated magnification, digital enlarge, imaging display, photo and video capture&storage on the SD card, it also can be connected to PC via USB2.0 cable and control by software.

Feature

1. Infinite optical system and high quality 10×/22mm eyepiece and infinite plan achromatic objectives.
2. 6.0 megapixel HDMI digital camera, images and videos can be easily stored on the SD card without computers, can improve the efficiency of research and analysis, the camera has measurement functions.
3. 11.6-inch HD digital LCD screen, high definition and high quality images, easy for people to share.
4. LED lighting system, long working life and save energy.
5. Two types of observation modes: binocular eyepiece and LCD screen, can meet different needs.

Application

BLM2-241 LCD digital microscope is an ideal instrument in biological, pathological, histological, hematological, bacterial, immune, pharmacological and genetic fields. It can be widely used in medical and sanitary establishments, such as hospitals, clinics, laboratories, medical academies, colleges, universities and related research centers.

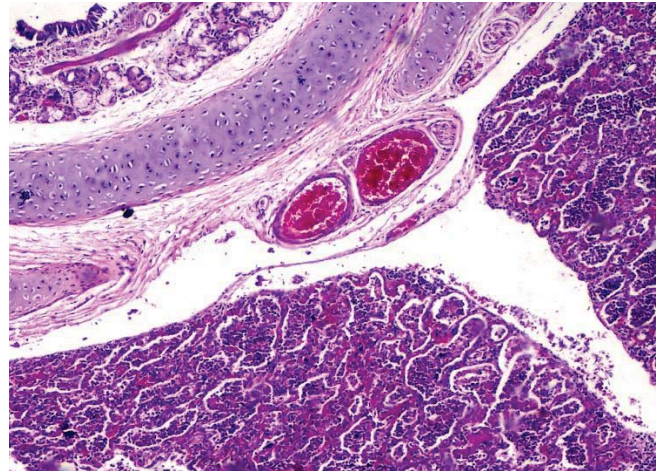
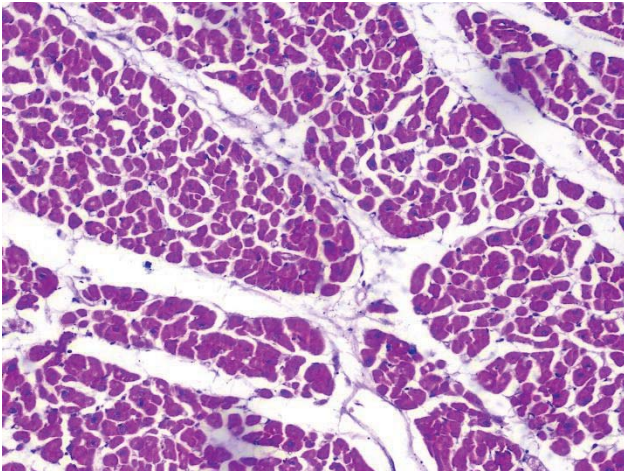
Specification

Item	Specification		BLM2-241
Digital Parts	Camera Model	BLC-600 Plus	●
	Sensor	Sony IMX307 CMOS Sensor	●
	Photo Resolution	6.0 Mega Pixel (3264 × 1840)	●
	Video Resolution	60fps@1920×1080	●
	Sensor Size	1/2.8 Inches	●
	Pixel Size	2.8um × 2.8um	●
	LCD Screen	11.6 Inches HD LCD Screen, Resolution is 1920 × 1080	●
	Data Output	USB2.0, HDMI	●
	Storage	SD Card (8G)	●
	Exposure time	0.001 sec ~ 10.0 sec	●
	Exposure Mode	Automatic & Manual	●
	White balance	Automatic	●
	Packing Dimension	305mm×205mm×120mm, 3kgs	●
Optical Parts	Viewing Head	Seidentopf trinocular head, 30° inclined, Interpupillary 48-75mm, Light distribution: 100: 0 and 50:50(eyepiece: trinocular tube), 30mm tube	●
	Eyepiece	Wide Field Eyepiece WF10×/22mm	●
		Wide Field Eyepiece WF15×/16mm, WF20×/12mm	○
		Eyepiece micrometer 0.1mm (only can be used with 10× eyepiece)	○
	Objective	Infinite Plan Achromatic Objectives 4×, 10×, 40×, 100×	●
		Infinite Plan Achromatic Objectives 2×, 20×, 60×	○
	Nosepiece	Backward Quadruple Nosepiece	●
		Backward Quintuple Nosepiece	○
	Stage	Double Layers Mechanical Stage 140mm×140mm/ 75mm×50mm	●
		Rackless Double Layers Mechanical Stage 150mm×139mm, Moving Range 75mm×52mm	○
	Condenser	Sliding-in Centerable Condenser NA1.25	●
		Swing-out Condenser NA 0.9/ 0.25	○
		Dark Field Condenser NA 0.7-0.9 (Dry, used for objectives except 100×)	○
		Dark Field Condenser NA 1.25-1.36 (Oil, used for 100× objectives)	○
	Focusing System	Coaxial Coarse & Fine Adjustment, Fine Division 0.002mm, Coarse Stroke 37.7mm per Rotation, Fine Stroke 0.2mm per Rotation, Moving Range 20mm	●
Illumination	1W S-LED Lamp, Brightness Adjustable	●	
	6V/20W Halogen Lamp, Brightness Adjustable	○	
	Kohler Illumination	○	

	Other accessories	Simple Polarizing Set (Polarizer and Analyzer)	○
		Phase Contrast Kit BPHE-1 (Infinite Plan 10×, 20×, 40×, 100× phase contrast objective)	○
	Video Adapter	0.5× C-mount	●
	Packing	1pc/carton, 35cm*35.5cm*55.5cm, gross weight: 12kg	●

Note: ● Standard Outfit, ○ Optional

Sample Image



8. BLM2-274 LCD Digital Biological Microscope



Introduction

BLM2-274 LCD digital biological microscope is a research level microscope which has been specially designed for college education, medical and laboratory research. The microscope has a 6.0MP high sensitive camera and 11.6" 1080P full HD retina LCD screen. Both traditional eyepieces and an LCD screen can be used for convenient and comfortable viewing. The modular design allows for various viewing modes such as brightfield, darkfield, phase contrast, fluorescence and simple polarizing.

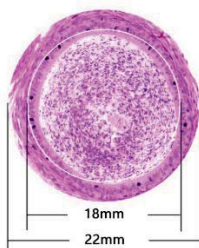
BLM2-274 can capture quick and easy snapshots, short videos and do measurement. It has integrated magnification, digital enlarge, imaging display, photo and video capture&storage on the SD card, it also can be connected to PC via USB2.0 cable and control by software.

Features

1. Excellent Optical Design.

(1) NIS60 infinite Optical System. NIS60 infinite plan objectives can provide high contrast and very flat image up to FN22mm, the system always brings you sharp, high resolution and high signal to noise ratio imaging.

(2) 22mm Wide Field of View. The microscopes achieve the wide field of 22mm view with 10× eyepieces. The eyepiece adopts a flat field distortion-free design to prevent the edge of the field from being imaginary and stray light.



(3) Various Observation methods. Besides bright field observation, dark field, phase contrast, fluorescent and simple

polarizing observation methods are optional.

Observation Methods	Bright Field	Dark Field	Phase Contrast	Fluorescent	Simple Polarizing
	●	●	●	●	●

(4) Multifunctional Universal Condenser. BLM2-274 microscope has adopted a universal condenser for bright field, dark field and phase contrast. The observation methods could be quickly switched by changing the dark field and phase contrast slider. The phase contrast and bright field slider is universal for 4x-100x objectives, simple and fast to use. The aperture diaphragm of the condenser is easily set to get exact value of diaphragm to correspond with different objectives.



(5) LED EPI-Fluorescent Illumination. The LED EPI-Fluorescent Illumination is safe and convenient. There is no need to warm up or cool down, and also no need to align the bulb. The life time of LED bulb is up to 5000 hours. There are two filters position available and switch is fast and easy.



2. Infinite Plan Objectives.

The BLM2-274 series microscopes have been fully optimized for various of microscopic applications, especially for beginners and the users with long time operation. The objectives provide high quality images and are easy to use.



(1) Plan Objective. With infinite plan objective, clear and flat image is over the entire field of view, image reproduction is better.

(2) 100x Water-immersion Objective. Ordinary 100x oil-immersion objective needs to use cedar oil as the observation medium. After use, it needs to be cleaned with ether alcohol or xylene, which is easy to cause air

pollution and improper cleaning. The water-immersion objective uses water as the medium, it is easy to clean, it also reduces the damage to the user's health and environmental pollution.

(3) 40× LWD Objective. The working distance of 40× objective can be up to 1.5mm, avoiding the contamination from residual immersion oil or water when converted from 100× to 40× objective.

3. External rechargeable battery can be used as the power source.

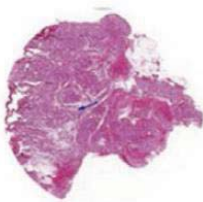
A charging port is reserved on the back of the microscope, external rechargeable portable battery can be connected to this port and used as power source of the microscope. So this microscope can be used outdoor or during power outages.



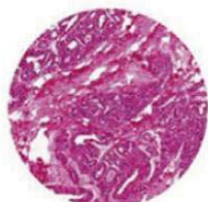
4. Intelligent operating system.

(1) Coded Nosepiece.

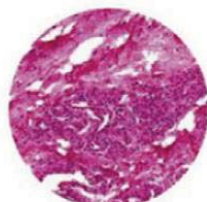
The BLM2-274 LCD digital biological microscope can memorize the illumination brightness when using each objective. When the objective has been changed, the light intensity will be automatically adjusted to reduce visual fatigue and improve work efficiency.



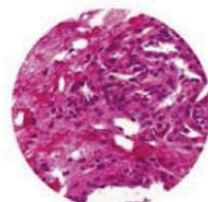
4X



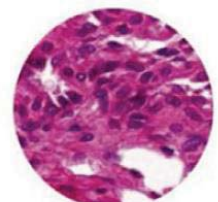
10X



20X



40X



100X

(2) Use a dimming knob (on left of base) to achieve multiple functions.

One Click: Enter standby status

Double Clicks: Light lock or unlock

Rotation: Adjust brightness

Press + Up-spin: Switch to the upper light source

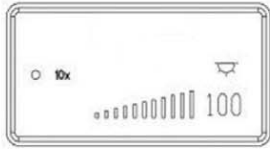
Press + Down-spin: Switch to the under light source

Press 3 seconds: Set the time of turning off the light after leaving



(3) The display of microscope working status.

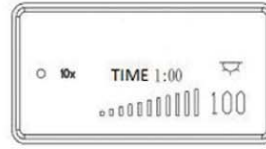
The LCD in the front of the microscope base can display the working status of the microscope, including magnification, light intensity, sleepy model and so on.



Start & working mode



Lock mode



ECO mode



Sleep mode

5. Easier to store and transport.

The BLM-274 LCD digital biological microscope is compact and can be placed in an ordinary classroom closet. It has a special carrying handle, it is also light weight and stable. There is a cord rest on back of the microscope to store the long power cord, improve the cleanliness of the laboratory and reduce the tripping accident which may be caused by the long power cord during the carrying process. The wooden storage box is optional, it is very convenient for storage and carrying.



6. Ergonomic Design.

In daily scientific research teaching and pathological diagnosis, working in front of the microscope for a long time has become normal, this always leads to fatigue and physical discomfort, thereby reducing work efficiency. BLM2-274 series microscopes have adopted high eye-point, low-hand focus mechanism, low-hand stage and other ergonomic designs to ensure the user can perform microscope operation in the most comfortable situation. The focus knob, illumination control knob and stage handle are all proximal. The user can put both hands on the table while working, and can operate the microscope with minimal movement.



Application

BLM2-274 LCD Digital biological microscopes is an ideal instrument in biological, histological, pathological, bacteriology, immunizations and pharmacy field and can be widely used in medical and sanitary establishments, laboratories, institutes, academic laboratories, colleges and universities.

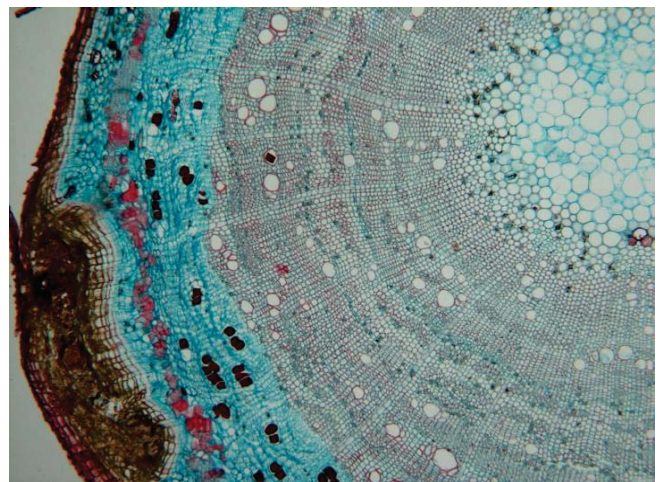
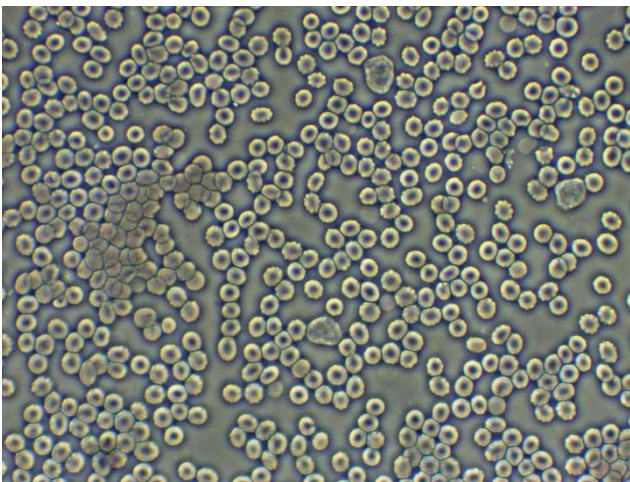
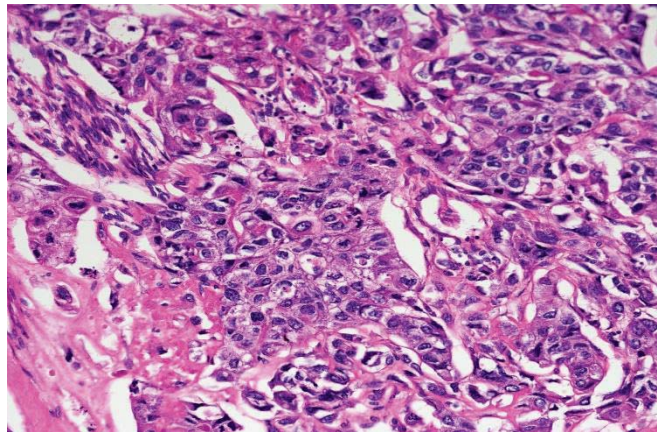
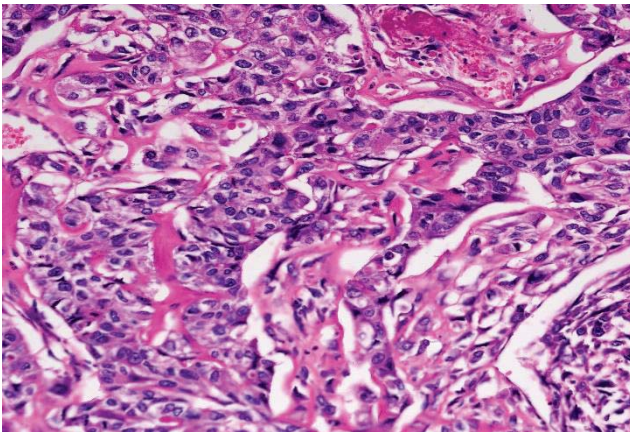
Specification

Item	Specification		BLM2-274
Digital Parts	Camera Model	BLC-600 Plus	●
	Sensor	Sony IMX307 CMOS Sensor	●
	Photo Resolution	6.0 Mega Pixel (3264 × 1840)	●
	Video Resolution	60fps@1920×1080	●
	Sensor Size	1/2.8 Inches	●
	Pixel Size	2.8um × 2.8um	●
	LCD Screen	11.6 Inches HD LCD Screen, Resolution is 1920 × 1080	●
	Data Output	USB2.0, HDMI	●
	Storage	SD Card (8G)	●
	Exposure time	0.001 sec ~ 10.0 sec	●
	Exposure Mode	Automatic & Manual	●
	White balance	Automatic	●
	Packing Dimension	305mm×205mm×120mm, 3kgs	●
Optical Parts	Optical System	Infinite Optical System	●
	Eyepiece	Extra Wide Field Eyepiece EW10×/22mm	●
		Wide Field Eyepiece WF15×/16mm	○
		Wide Field Eyepiece WF20×/12mm	○
	Viewing Head	Seidentopf Trinocular Viewing Head, Inclined at 30°, 360° Rotatable, Interpupillary 47-78mm, Splitting ratio 5:5, Anti-Fungus, Tube Diameter 30mm	●
	Objective	NIS60 Infinite Plan Achromatic Objective 4× (N.A.:0.10, W.D.:30mm)	●
		NIS60 Infinite Plan Achromatic Objective 10× (N.A.:0.25, W.D.:10.2mm)	●
		NIS60 Infinite Plan Achromatic Objective 40× (N.A.:0.65, W.D.:1.5mm)	●
		NIS60 Infinite Plan Achromatic Objective 100× (Water, N.A.:1.10, W.D.:0.2mm)	●
		NIS60 Infinite Plan Achromatic Objective 20× (N.A.:0.40, W.D.:4.0mm)	○
		NIS60 Infinite Plan Achromatic Objective 60× (N.A.:0.80, W.D.:0.3mm)	○
		NIS60 Infinite Plan Achromatic Objective 100× (Oil, N.A.:1.25, W.D.:0.3mm)	○
		NIS60 Infinite Plan Phase Contrast Achromatic Objective 10×, 20×, 40×, 100×	○
		NIS60 Infinite Plan Semi-APO Fluorescent Objectives 4×, 10×, 20×, 40×, 100×	○
	Nosepiece	Backward Coded Quintuple Nosepiece	●
	Stage	Rackless stage, Size 230×150mm, Moving Range 78×54mm	●
Condenser	Inserted Abbe Condenser NA1.25(Including Empty Plate)	●	
	Bright Field-Phase Contrast Plate (4x-100x Universal)	○	
	Bright Field-Dark Field Plate	○	

Focusing	Coaxial coarse and fine adjustment, Coarse stroke 37.7mm per rotation, Fine stroke 0.2mm per rotation, Fine division 0.002mm, Moving range 30mm	●
Illumination	3W S-LED (LCD Display Magnification, Timing Sleep, Brightness Indication and Lock, etc.)	●
Fluorescent Attachment	3W LED, Two Filter Cubes (B, B1, G, U, V, R, Auramine O can be combined), Fly-eye Lens Illumination	○
Other Accessories	0.5× C-mount adapter	●
	Simple Polarization Set	○
	0.01mm stage micrometer	○
Filter	Green	○
	Blue, Yellow, Red	○
Packing	1pc/carton, Carton size: 48cm*33cm*60cm, Net/Gross Weight: 10.5kg/12.5kg	●

Note: ●Standard Outfit, ○Optional

Sample Image



9. BS-2010MD/BD Digital Biological Microscope



BS-2010MD



BS-2010BD

Introduction

BS-2010MD/BD digital microscope feature a built-in 1.3MP Digital Camera and professional software offering high resolution and user friendly operation. This combination of microscope, digital imaging system and software is easy to operate and offers outstanding performance. It can preview, take photos, videos and do measurement. LED illumination saves energy and has long working life.

Feature

1. Built-in 1.3 Mega Pixel CMOS camera, vivid images and real color reproduction.
2. High definition images and videos, high frame rate.
3. Professional image analyze software supports Windows Vista / Win 7/8/10 32bit & 64 bit Operation System.
4. Support Multi-language (Arabic, Chinese, English, French, German, Japanese, Polish and etc.).
5. Compact and flexible, ideally suited for desktop, laboratory worktable.

Application

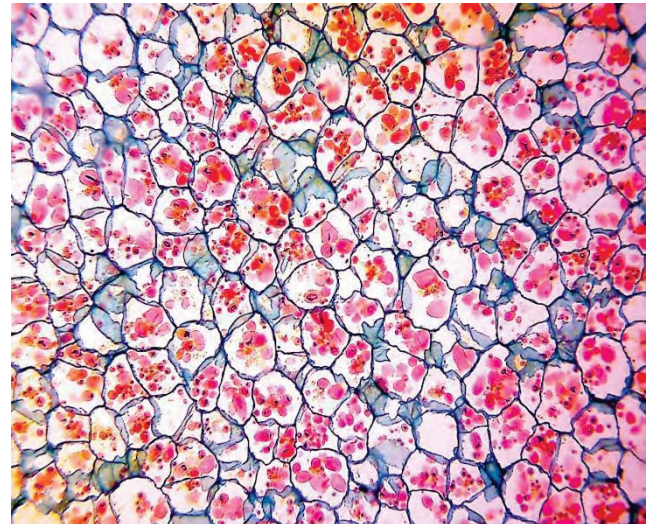
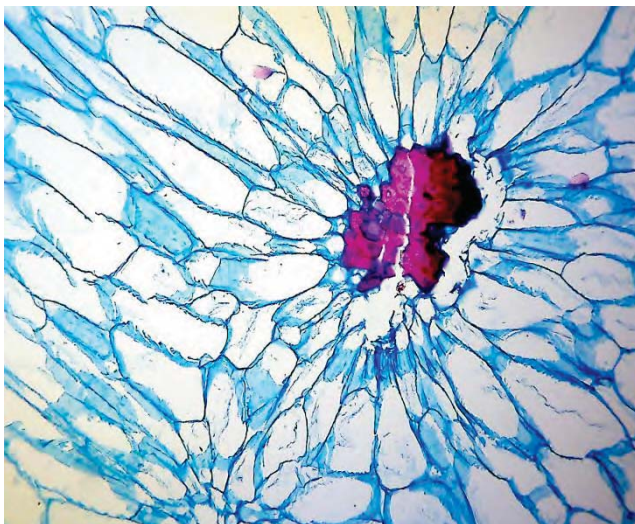
BS-2010MD/BD digital microscopes are primarily designed for school students to do image analysis and distant sharing. The microscopes also provide a superior cost effective solution for computer interactive laboratory, clinical environments and individuals as hobby etc.

Specification

Item	Specification	BS-2010MD	BS-2010BD
Viewing Head	Monocular head, Inclined at 45°, 360° Rotatable	●	
	Binocular head, Inclined at 45°, 360° Rotatable, 55-75mm		●
Camera System	Resolution: 1280×1024(1.3MP)	●	●
	Output: USB2.0	●	●
	Operation System: Windows 2000/XP/VISTA/Win 7/8/10	●	●
	Software: ScopelImage 9.0	●	●
Eyepiece	Wide Field Eyepiece: WF10×/18mm	●	●
	WF5×/20mm, WF16×/11mm, WF25×/8mm	○	○
Objective	Achromatic Objective: 4×, 10×, 40×(S), 100×(S, Oil)	●	●
	Achromatic Objective: 20×, 60×	○	○
Stage	Double Layers Mechanical Stage: 110×120mm, Moving Range X-Y: 70×20mm	●	●
Condenser	Abbe NA 1.25 Condenser with Iris Diaphragm (Φ2-Φ28mm)	●	●
Focusing	Coaxial Coarse and Fine Adjustment, Moving Range 10mm	●	●
Illumination	1W LED illumination, brightness adjustable	●	●
Accessories	Operation manual, dust cover, AC adapter and USB cable	●	●
Package	1pc/carton, 28cm×22cm×40cm, 5kg	●	●

Note: ● Standard Outfit, ○ Optional

Sample Image



10. BS-2020MD/BD Digital Biological Microscope



BS-2020MD



BS-2020BD

Introduction

With 1.3MP colorful digital camera, competitive price and easy to operate features, the BS-2020MD/BD monocular/binocular digital microscopes are widely used in educational, academic, agricultural and study field. They are connected to a computer via a USB cable. The software is powerful and easy to operate, it can preview, take photos, videos and do measurement.

Feature

1. Built-in 1.3 Mega Pixel CMOS camera, vivid images and real color reproduction.
2. High definition images and videos, high frame rate.
3. Professional image analyze software supports Windows Vista / Win 7/8/10 32&64bit Operation System.
4. Support Multi-language (Arabic, Chinese, English, French, German, Japanese, Polish and etc.).
5. Compact and flexible, ideally suited for desktop, laboratory worktable.

Application

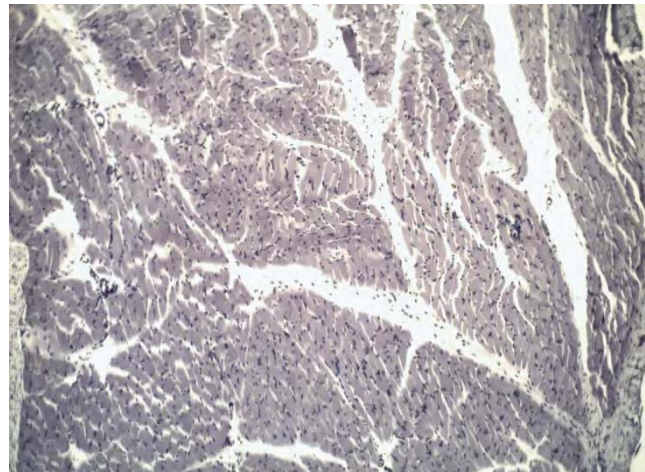
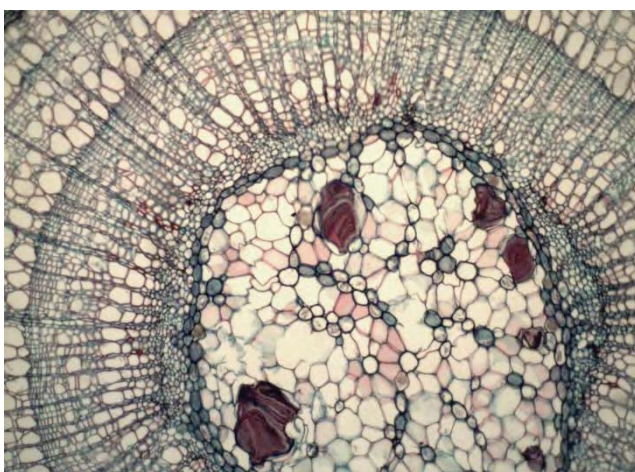
These microscopes are ideally suited for school biological education and medical analyses area. They can be widely used in clinics, hospitals, schools, academic labs and scientific research department.

Specification

Item	Specification	BS-2020MD	BS-2020BD	
Viewing Head	Monocular Head with digital camera, Inclined at 30°, 360° Rotatable	●		
	Seidentopf Binocular Head with digital camera, Inclined at 30°, 360° Rotatable, Interpupillary Distance 48-75mm		●	
	Camera System	Resolution	1280×1024 (1.3Mega Pixel)	●
		Output Mode	USB2.0	●
		Operation System	Window 2000/ XP/ Vista/ Win 7	●
		Software	ScopelImage 9.0	●
Range of Viewing Field		90%	●	
Eyepiece	WF10×/18mm	●	●	
	WF16×/11mm, WF25×/8mm	○	○	
Nosepiece	Backward Quadruple Nosepiece	●	●	
Objective	Achromatic Objective 4×, 10×, 40×, 100×	●	●	
	Achromatic Objective 20×, 60×	○	○	
Stage	Double Layers Mechanical Stage 132×142mm/ 75×40mm	●	●	
Condenser	Abbe NA1.20 with Iris Diaphragm & Fliter	●	●	
Focusing	Coaxial Coarse & Fine Adjustment, Fine Division 0.004mm, Coarse Stroke 32.7mm per Rotation, Fine Stroke 0.4mm per Rotation, Moving Range 24mm	●	●	
Illumination	1W S-LED illumination, Brightness Adjustable	●	●	
	Halogen Lamp 6V/ 20W, Brightness Adjustable	○	○	
Optional accessories	Phase Contrast Kit	○	○	
	Dark-Field Attachment	○	○	
	Polarization Attachment	○	○	
	Rechargeable battery	○	○	
Package	1pcs/carton, 39.5cm*26.5cm*50cm, 8kg	●	●	

Note: ● Standard Outfit, ○ Optional

Sample Image



9. BSDM-500 3D Super-Depth Digital Microscope



BSDM-500

Introduction

BSDM-500 3D Super-Depth Digital Microscope provides you 3D/Super-depth imaging, efficient and precise observation, unveiling a whole new dimension of the microscopic world for you. BSDM-500 has various observation modes, rich measurement functions, excellent image processing and convenient operational experience.

Feature

1. Automatic frame hovering and angle control

Utilizing clutch control technology, the frame achieves automatic hovering at any angle upon releasing the button. The frame supports a rotation angle range from -90° to 90° , enabling panoramic observation without tilting the sample. Built-in high-precision angle sensors ensure precise and reliable rotation angles.

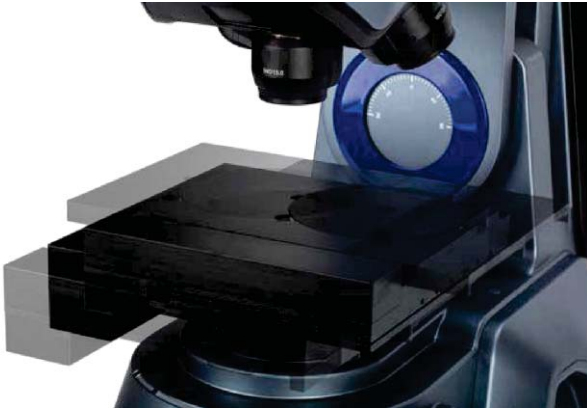


2. Integrated controller operation

The controller contains various shortcut keys, enabling efficient and quick control of the microscope body and software.

Supported functions include: navigation, magnification switching, illumination mode selection, platform electric movement, automatic focusing, real-time depth synthesis, 2D/3D image stitching, glare elimination, high dynamic range (HDR) imaging, shake correction, photography, and data saving, etc.

3. Large travel, large rotation angle stage



In rotation priority mode, the stage has a movement range of 50mm x 50mm and can achieve $\pm 90^\circ$ rotation angles. It is equipped with built-in angle sensors so that even when rotating, the platform can still move in the direction seen in the image.

In travel priority mode, the stage expands to a movement range of 100mm x 100mm to meet the observation needs of larger samples.

4. Precision and adjustment of electric Z-axis

Optional attachment of grating ruler to enhance the measurement accuracy of the Z-axis.

The coarse and fine handwheels adopt a stepless speed regulation scheme, making the adjustment of the Z-axis smoother and more comfortable, enhancing the operational experience.

5. Transmitted illumination system



Equipped with LED transmitted illumination to observe transparent samples.

LED transmitted illumination can prevent sample damage from heat and extend the lifespan of the equipment.

6. Complete series of objective configuration



With a continuous zoom system and various APO lenses, it provides the best magnification, resolution, and working distance.

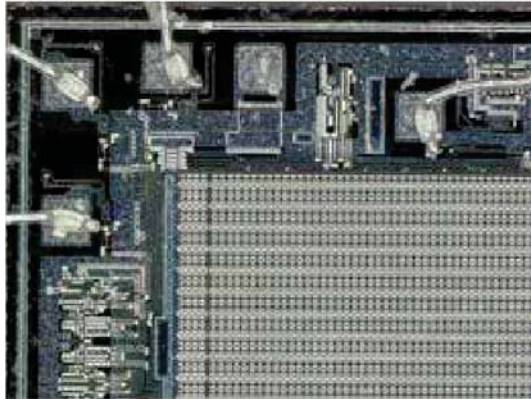
Users can quickly switch from macro-overview to detailed observation with just one click.

Five objective options are provided to meet the diverse needs of different users.

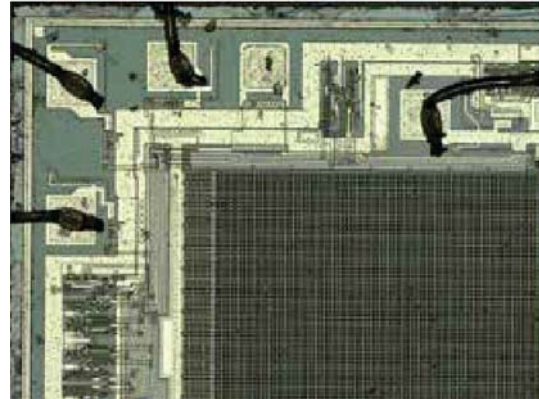
7. Integrated multiple illumination modes

The BSDM-500 integrates coaxial reflected illumination, coaxial oblique illumination, annular illumination, segmented annular illumination, mixed illumination and transmitted illumination. It can achieve bright field, dark field, MIX, polarized light, DIC, and other observation modes, providing flexible illumination solutions for observing samples with different attributes.

The unique four-zone illumination design allows users to illuminate one or more areas as needed to obtain the best observation results.



Ring illumination can restore the original color and stain status of the sample.

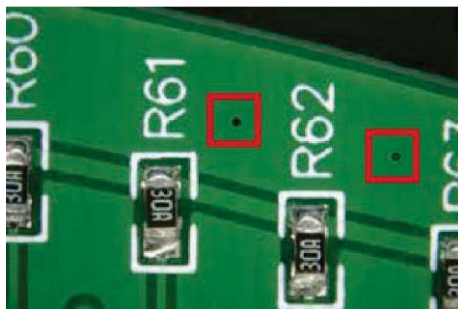


Coaxial illumination is suitable for observing the fine structure of flat samples.

8. Cross-field rapid measurement

When observing at high magnification, traditional methods require extensive dimensional measurements on stitched images, which not only consume time but also inaccuracies due to stitching errors.

BSDM-500 offers a solution for large-scale dimensional measurements, eliminating the cumbersome steps of conventional methods. Users can easily specify two points across the field of view, enabling quick and accurate measurement of the distance between these two points.



20X

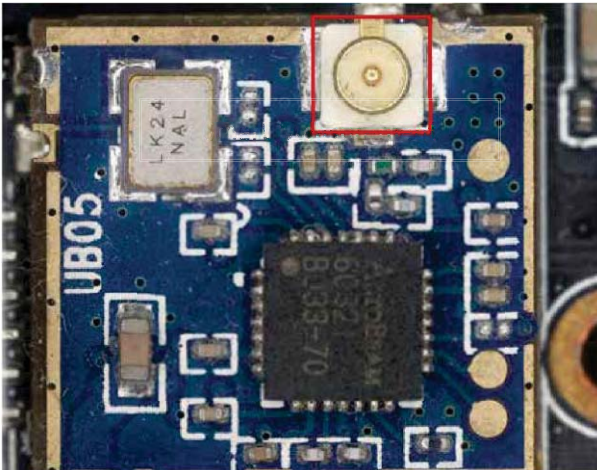


200X

测量结果		
(单位: μm)		
标记点	坐标	
<input checked="" type="checkbox"/> 4	xyz: (3321.88,41211.9,2919.54)	
<input checked="" type="checkbox"/> 5	xyz: (11223.3,42880.4,2919.54)	
<input type="button" value="删除"/> <input type="button" value="清空"/>		
名称	类型	结果
4_5	距离	8075.63
<input type="button" value="删除"/> <input type="button" value="清空"/>		

9. Intelligent planar measurement

In order to solve the measurement errors caused by traditional manual selection of measurement points, the BSDM-500 integrates advanced edge grayscale recognition. Users only need to select the area to be measured, and the software automatically identifies feature positions and measures feature geometry information. This not only ensures measurement consistency between different operators but also avoids errors caused by manual operations, thus improving measurement accuracy and efficiency.



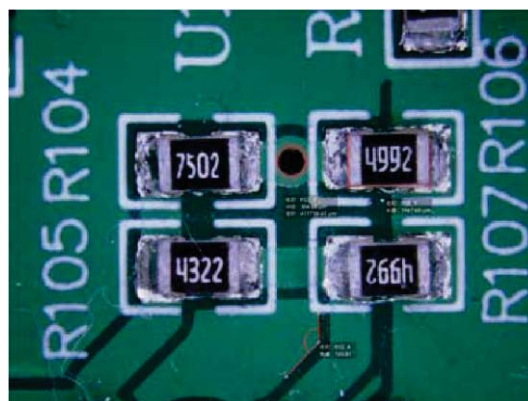
10. Rich measurement tools

Telecentric System

Through specific optical design, it places the entrance pupil of the lens at the focal plane to achieve low distortion and stable magnification. This improves imaging accuracy and ensures the accuracy and consistency of measurement results.

2D Measurement Tool Set

Provides diverse measurement functions such as point-to-point, point-to-line, parallel lines, angles, and areas, supports exporting data to Excel. Users can also customize settings (font size, line color, unit display) for an optimized measurement experience.

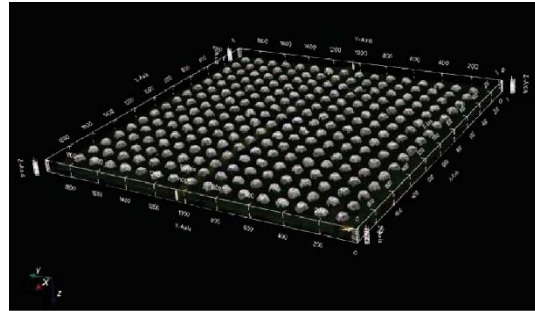
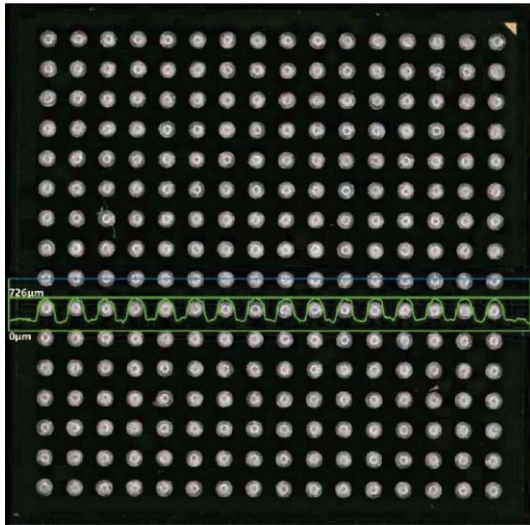


Automatic Template Measurement

Create and save measurement parameters that you frequently use for quick and accurate repetitive application.

3D Measurement Functionality

Easily calculate the volume, surface area, and height of objects.

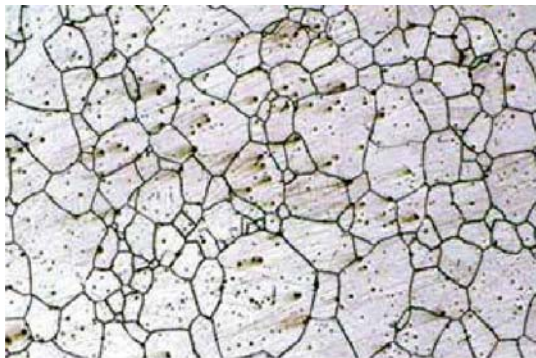


Contour Measurement

Precisely measure and analyze the shape of three-dimensional reconstructed objects.

Particle Counting and Analysis

Combining intelligent algorithms with grayscale recognition technology, automatically separate overlapping objects, and quickly count the particle area and quantity in the target area.

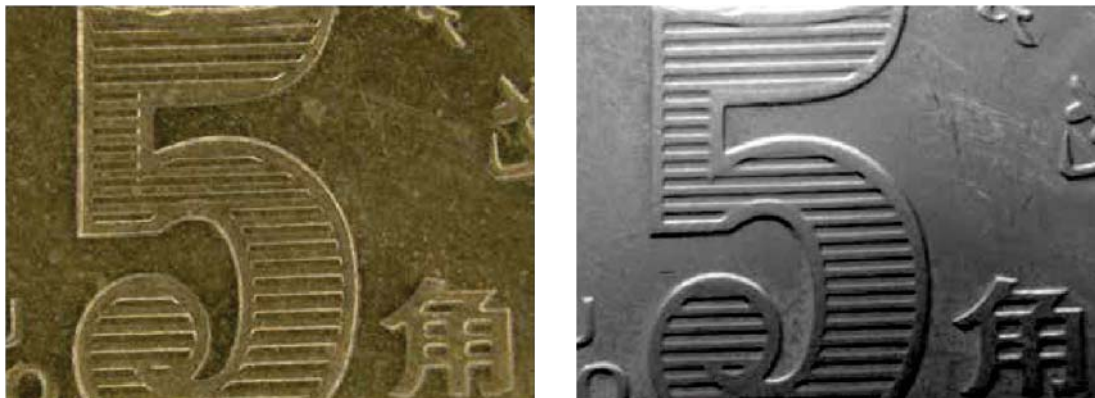


11. Image processing

Reflection Removal Processing

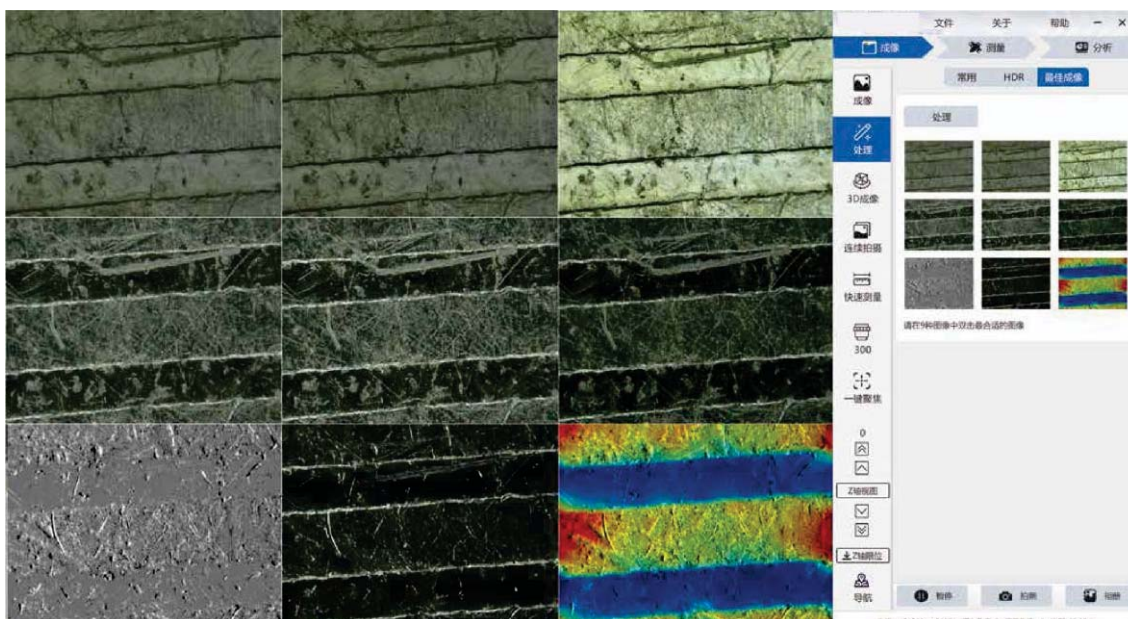


Optical Shadow Processing



One-click access to preview nine processing effects

In the optimal image mode, users can obtain nine preview effects (optical shadow, image sharpening, reflection removal, relief color, etc.). It is easy to compare and select the processing effect that best meets the needs to achieve the best quality of microscopic image.



Depth Fusion

The fusion of optics and algorithms presents clearer and more threedimensional images, bringing a richer observation experience.

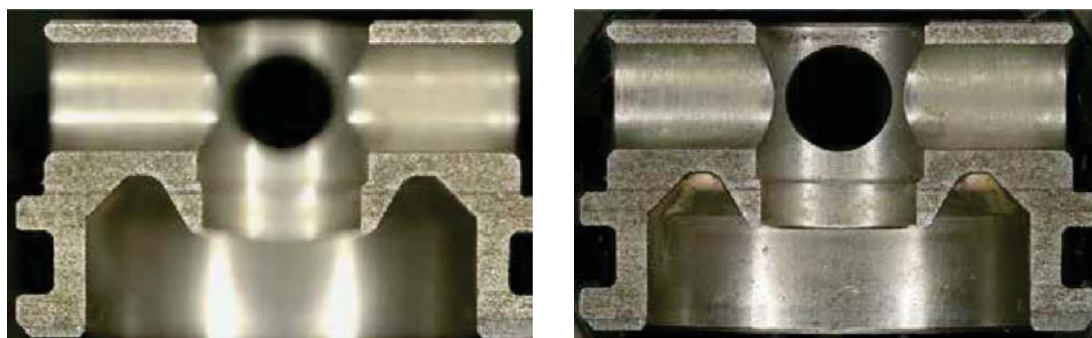
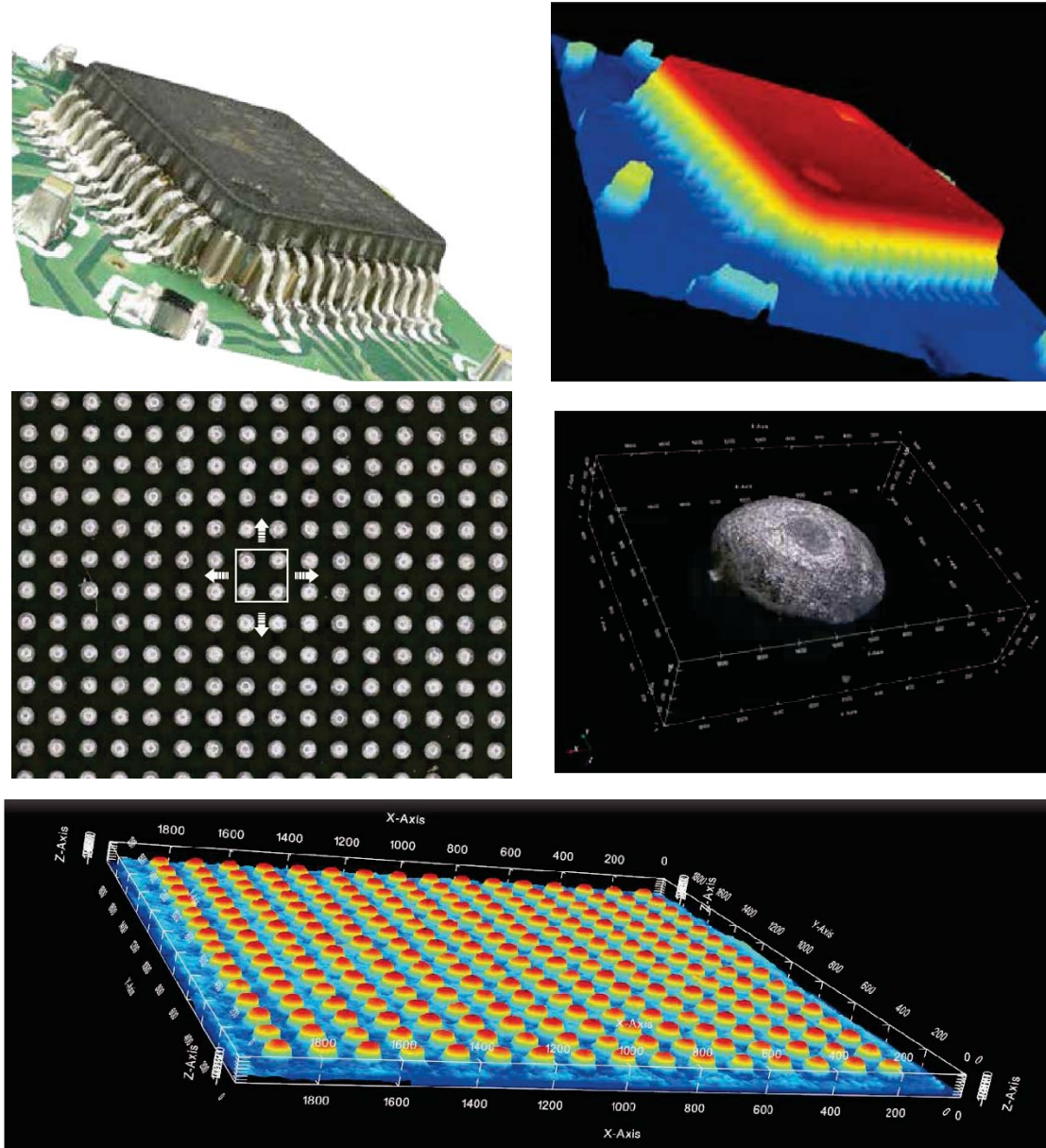


Image Stitching

Seamlessly stitch multiple images to create a perfect visual experience.

3D Reconstruction

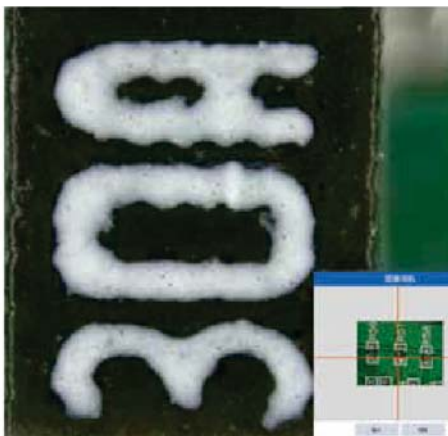
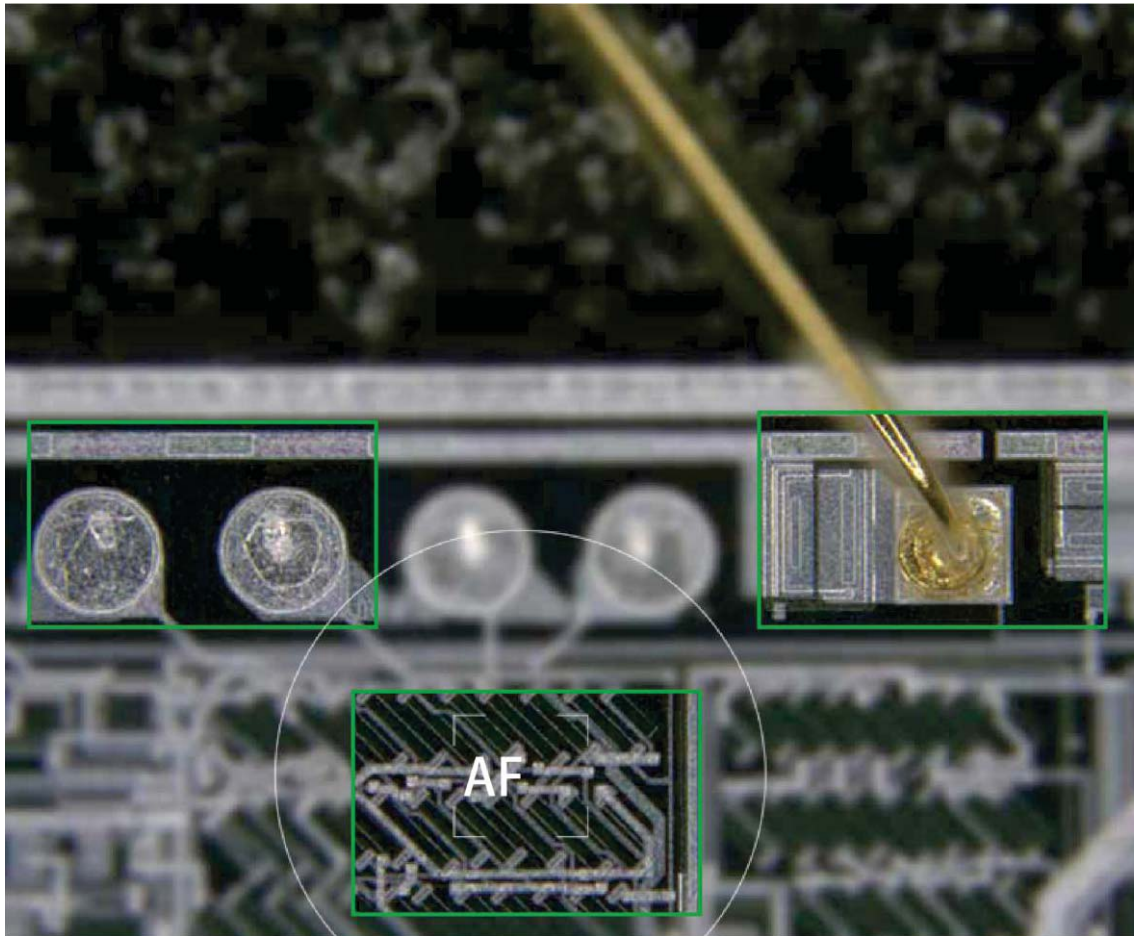
Collect Z-series images within the current field of view for 3D reconstruction.



12. Rapid focus and navigation

Quick automatic focus

The automatic focusing is equipped with intelligent auto-focus function, which can quickly and accurately adjust the focal length, ensuring that you capture every detail. Whether observing biological samples or researching material structures, our auto-focus technology can help you obtain clear, high-quality images.

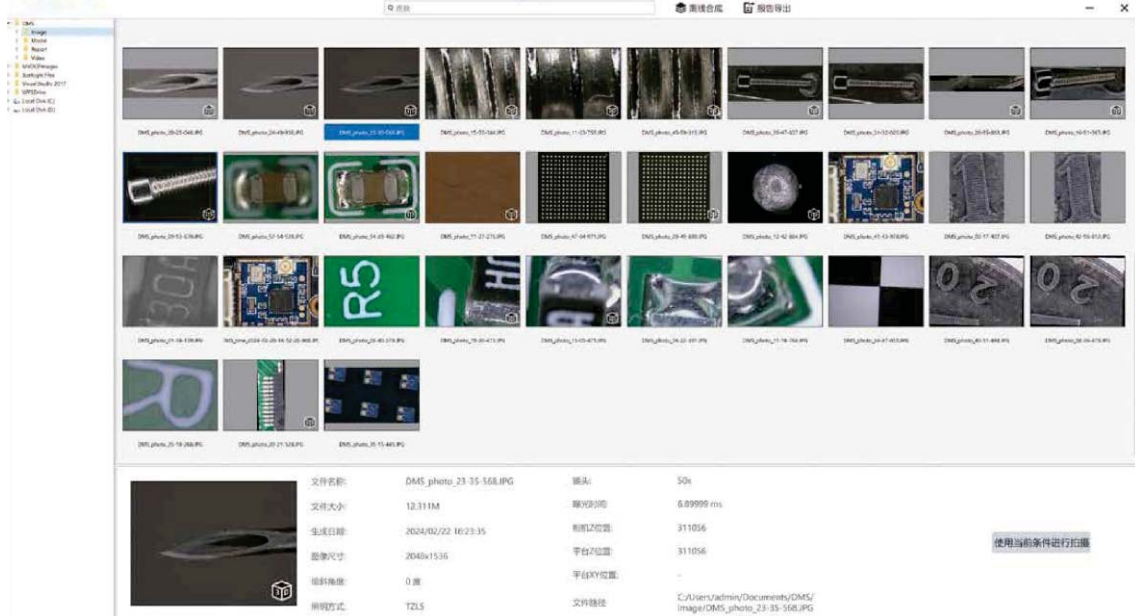


Intuitive navigation system

With the navigation window, you can accurately locate the area you want to observe at any magnification.

Saving and reporting

Powerful scene reproduction feature enables you to accurately reproduce the shooting conditions of the images. The reporting function helps you easily generate professional and accurate reports. No need for manual data organization and formatting, just click to generate complete report content. The auto-generate report function supports custom templates and styles, meeting your various needs.



Application



80X Screw – 3D Stitching



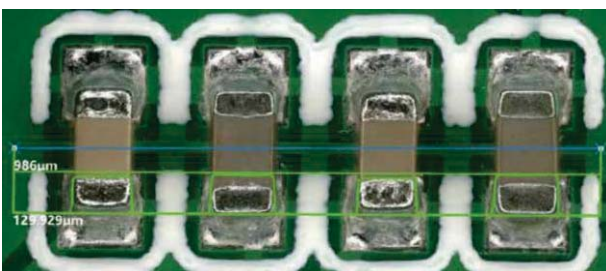
80X Needle – Depth Fusion

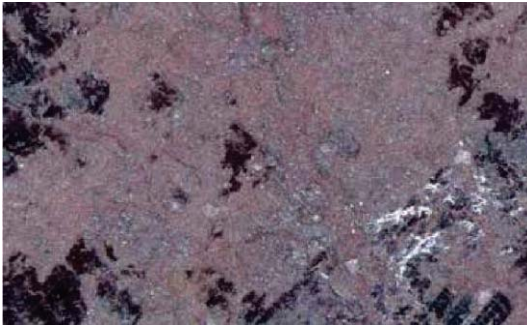


200X Screw – 3D Reconstruction

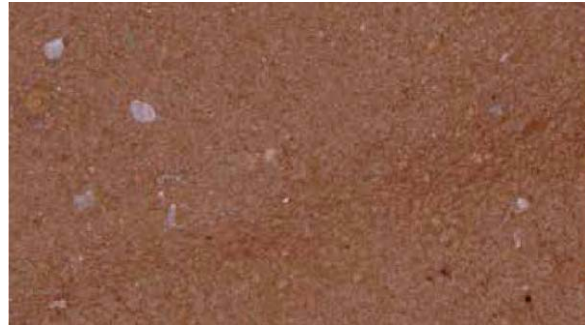


80X Beetle – 3D Stitching

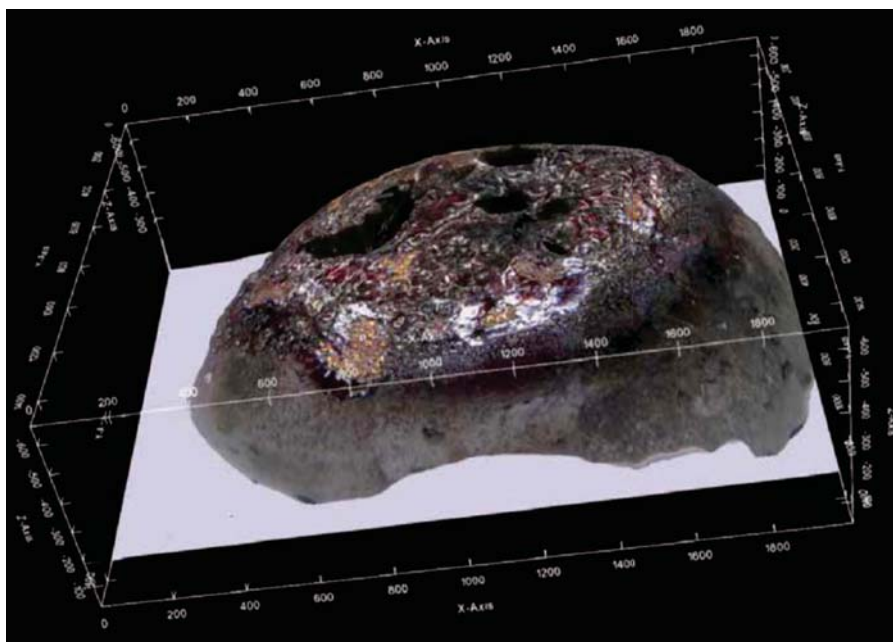




400X Metal Surface – Ring Illumination



400X Leather – Ring Illumination



200X Metal Bead – 3D Measurement

Specification

Item	Specification	BSDM-500
Zoom Lens	Zoom lens, built-in continuous zoom system, zoom ratio 10:1, can simultaneously carry 4 objectives, motorized switchable magnification. Built-in coaxial reflected illumination, with four-zone independent control. Built-in 3.2 mega-pixel color camera: 1/1.8 inch, frame rate 50fps (max), resolution 2048*1536. Equipped with polarizer & analyzer, DIC slot, supporting bright field, dark field, MIX, polarization, DIC observation. Weight 6.6kg.	●
	High-resolution zoom lens, built-in continuous zoom system, zoom ratio 10:1, can simultaneously carry 4 objectives, motorized switchable magnification. Built-in coaxial reflected illumination, with four-zone independent control. Built-in 20 mega-pixel color camera: 1/1.8 inch, frame rate 50fps (max), resolution 5120*3840. Equipped with polarizer & analyzer, DIC slot, supporting bright field, dark field, MIX, polarization, DIC observation. Weight 6.6kg.	Developing

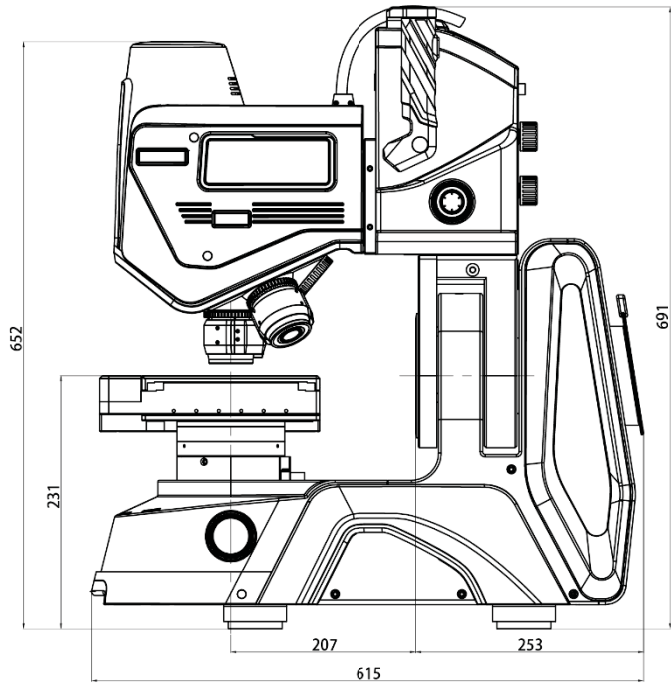
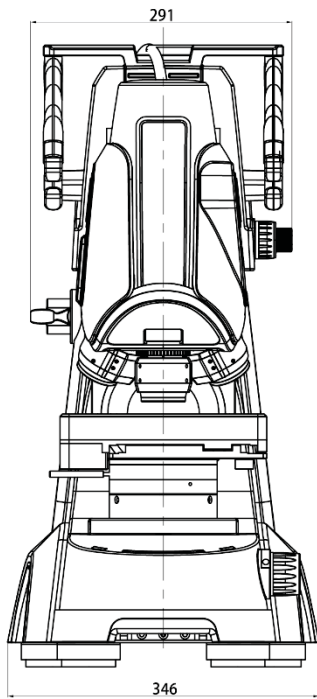
Objective	Plan apochromatic objective, magnification 20-100X, built-in dark field illumination with four-zone independent control, with magnification recognition device, WD=15mm, weight 0.39kg	●
	Plan apochromatic objective, magnification 100-500X, built-in dark field illumination with four-zone independent control, with magnification recognition device, WD=32mm, weight 0.36kg	○
	Plan apochromatic objective, magnification 200-1000X, built-in dark field illumination with four-zone independent control, with magnification recognition device, WD=15mm, weight 0.4kg	●
	Plan apochromatic objective, magnification 500-2500X, with magnification recognition device, WD=6.3mm, weight 0.42kg	○
	Plan apochromatic objective, magnification 2500-7500X, with magnification recognition device, WD=1.5mm, weight 0.51kg	Developing
Stage & Frame	Motorized stage, stage size: 230mm*245mm. In rotation priority mode, movement range: 50mm*50mm, ±90 ° manual rotation angles. In travel priority mode, movement range: 100mm*100mm, ±90 ° manual rotation angles. Travel precision 0.1μm, maximum moving speed 20mm/s, rotation precision 1°. Equipped with 3W LED transmission illumination system, color temperature 4750-5500K, brightness adjustable. Equipped with 132mm glass stage board/ black and white board. Load capacity of 5kg, weight 6.5kg.	●
	Motorized Z-axis, used for lifting and lowering the zoom lens, with fine and coarse coaxial handwheel. Travel range: 51mm, precision: 0.1um, maximum moving speed 17mm/s. Including Z-axis external cable (0.7m). Weight 6.2kg	●
	Coarse handwheel lifting stage, stroke 50mm, precision 1um, maximum moving speed 10mm/s. Swing arm ±90 ° rotatable, rotation precision 1 °, with angle recognition function. Includes 3C power cable, direct connection cable (0.5m), USB-CAN card. Weight 27.7kg.	●
Controller	Controller, used to control motorized Z-axis, display, illumination, imaging, etc. Weight 0.56kg	●
Polarizing Attachment	Polarizer, 360° rotatable	○
	Analyzer, 360° rotatable	○
DIC	DIC kit	Developing
Software & PC	Circular standard board, supporting automatic calibration with the software	○
	Offline software (not connected to the microscope) for imaging observation and data measurement, with a USB dongle for offline software authorization.	Developing
	All in one computer, 28 inches monitor, resolution: 4K, CPU: i7, GPU discrete graphics, memory: 32GB, hard drive capacity: 512GB+1TB, including USB docking station. Weight 12.3kg	●
	Software, used for microscope imaging observation (connected to microscope). It can achieve illumination control, 2D and 3D image shooting, image optimization, plane measurement, contour measurement, area/volume measurement, particle counting, and includes one USB encryption dongle.	●
Other	Internal hexagonal Spanner M4	●
	Internal hexagonal Spanner	●
	Paper box with pearl cotton, dust cover	●

Note: ● Standard Outfit, ○ Optional

Configuration Chart

Item	Specification	
Optical System	Telecentric Continuous Zoom System	
Comprehensive Magnification	20-7500X	
Magnification Switching Method	Electric Switching	
Camera	1/1.8 inch, 3.2MP, max frame rate 50 fps	
	1/1.7 inch, 12MP, max frame rate 30 fps	
Illumination Methods	Coaxial episcopic, coaxial oblique, annular illumination, segmented annular illumination, mixed illumination, transmitted illumination	
Stage	Stage Size	230*245mm
	Travel Range	Maximum 100*100mm
	Rotation Angle (with angle recognition)	Maximum $\pm 90^\circ$
	Load Capacity	5 kg
Microscope Frame	Upper Z-axis Travel	51mm
	Upper Z-axis Movement Method	Electric, handwheel, controller, software control
	Lower Z-axis Travel	50mm
	Lower Z-axis Movement Method	Electric, handwheel, control
	Tilt Angle (with angle recognition)	$\pm 90^\circ$
Controller	Controls the linkage of various components	
Computer	28-inch 4K Ultra HD LCD monitor. CPU: i7. Memory: 32 GB. Hard Drive: Solid State Drive + Mechanical Hand Drive	
Software	Imaging	2D imaging
		3D imaging
		Image processing
		Stitching imaging
		Multi-area shooting
	measurement	Rapid measurement
		Cross-field measurement
		Planar measurement
		Point height measurement
		Automatic measurement
		3D measurement
		Contour measurement
		Particle counting
Power Voltage	100-240VAC 50/60HZ	
Device Size	602*346*692mm (excluding computer and controller)	

Dimension



Unit: mm