

## 1. BS-7000A Upright Fluorescence Microscope



### Introduction

BS-7000A fluorescence microscope is a laboratory fluorescence microscope with perfect infinite optical system. The microscope uses mercury lamp as the light source, the fluorescence attachment has 6 positions for filter blocks, which allows easy change of filter blocks for various fluorochrome.

### Feature

1. Perfect image with infinite optical system.
2. High resolution fluorescence objectives are optional for excellent fluorescence images.
3. Advanced and precision lamp housing reduces the light leak.
4. Reliable power supply with digital display and timer.

### Application

BS-7000A Fluorescence microscope is used to study the absorbing, transportation, chemicals distribution and positioning in cells. It is widely used in universities, hospitals and life science labs for disease examination, immune diagnosis and scientific research.

Specification

Item	Specification				BS-7000A
Optical System	Infinite Optical System				●
Viewing Head	Seidentopf Trinocular Head, Inclined at 30°, Interpupillary Distance 48-75mm				●
Eyepiece	Extra Wide Field Eyepiece EW10×/22mm, Eyepiece tube diameter 30mm				●
Nosepiece	Backward Quintuple Nosepiece				●
	Backward Sextuple Nosepiece				○
Objective	Infinite Plan Achromatic Objective	2×/0.05,	W.D.=18.3mm		○
		4×/0.10,	W.D.=17.3mm		●
		10×/0.25,	W.D.=10mm		●
		20×/0.40,	W.D.=5.1mm		○
		40×/0.65(S),	W.D.=0.54mm		●
		60×/0.8(S),	W.D.=0.14mm		○
	100×/1.25(S, Oil),	W.D.=0.13mm		●	
	Infinite Plan Fluorescence Objective	4×/0.13,	W.D.=16.3mm		○
		10×/0.30,	W.D.=12.4mm		○
		20×/0.50,	W.D.=1.5mm		○
40×/0.75(S),		W.D.=0.35mm		○	
100×/1.3(S, Oil),	W.D.=0.13mm		○		
Condenser	Swing Condenser NA 0.9/ 0.25				●
Focusing	Coaxial Coarse and Fine Adjustment, Fine Division 0.001mm, Coarse Stroke 37.7mm per Rotation, Fine Stroke 0.1mm per Rotation, Moving Range 24mm				●
Stage	Double Layers Mechanical Stage 185×142mm, Moving Range 75×55mm				●
Photo Adapter	Used to connect Nikon or Canon DSLR camera to the microscope				○
Video Adapter	1× or 0.5× C-mount adapter				○
Transmitted Kohler Illumination	External Illumination, Aspherical Collector with Kohler Illumination, Halogen Lamp 6V/30W, Brightness Adjustable				●
	External Illumination, Aspherical Collector with Kohler Illumination, Halogen Lamp 24V/100W, Brightness Adjustable				○
	3W LED Illumination, Brightness Adjustable				○
	5W LED Illumination, Brightness Adjustable				○
Reflected Light Source		Excitation	Dichroic Mirror	Barrier Filter	
	Blue Excitation	BP460~490	DM500	BA520	●
	Blue Excitation(B1)	BP460~495	DM505	BA510-550	○
	Green Excitation	BP510~550	DM570	BA590	●
	Ultraviolet Excitation	BP330~385	DM400	BA420	○
	Violet Excitation	BP400~410	DM455	BA455	○
	Red Excitation	BP620~650	DM660	BA670-750	○
Lamp	100W HBO Ultra Hi-voltage Spherical Mercury Lamp				●
Protection barrier	Barrier to Resist the Ultraviolet Light				●
Power Supplier	Power Supplier NFP-1, 220V/ 110V Voltage Interchangeable, Digital Display				●
Immersion Oil	Fluorescence Free Oil				●

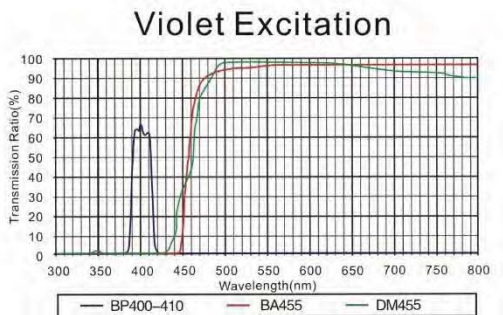
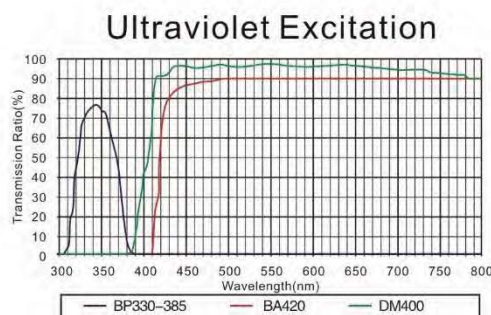
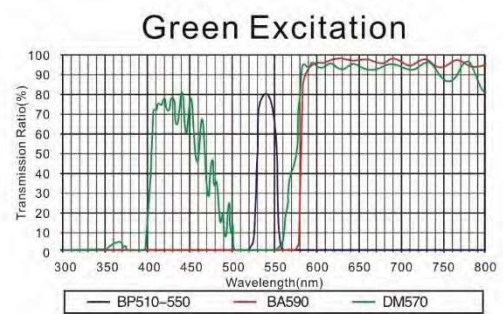
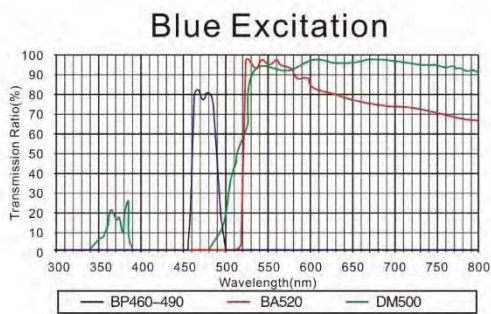
Filter	Neutral ND25/ ND6 Filter	○
Centering Target		○

Note: ●Standard Outfit, ○Optional

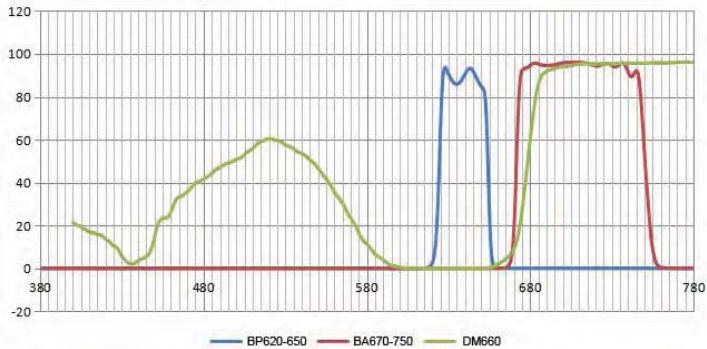
## Epi-fluorescence Attachment



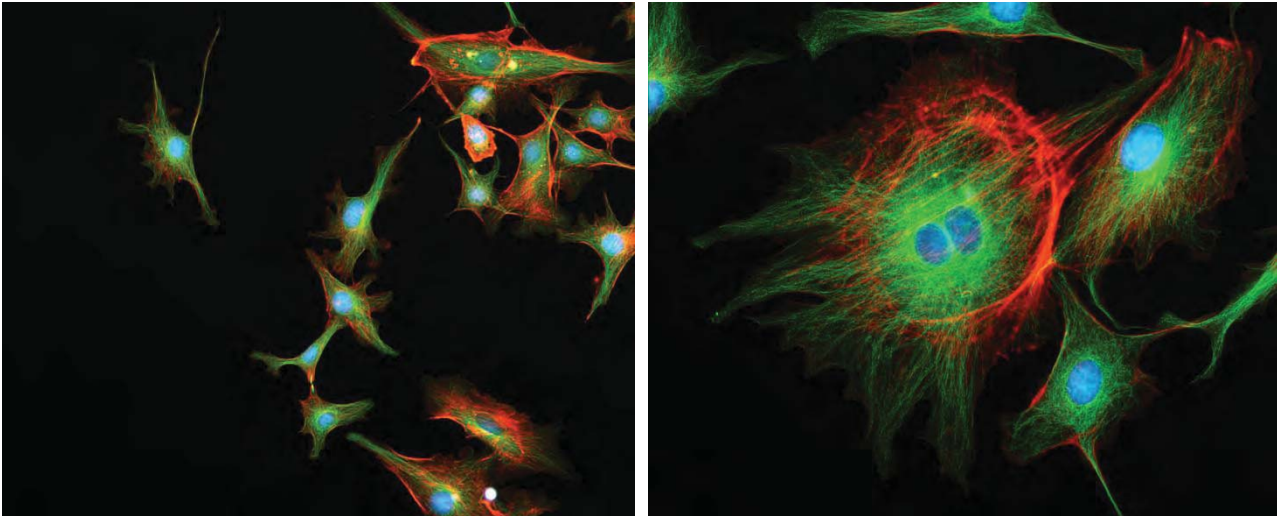
## Characteristics of Mirror Units Wavelength



Red Excitation



Sample Image



**2. BS-7000B Inverted Fluorescence Microscope**



**Introduction**

BS-7000B Inverted Fluorescence Microscope is specifically designed for the observation of cell culture. Infinite Optical System gives excellent Optical performance. Excellent high resolution fluorescence objectives are optional to generate high quality fluorescence images. This microscope can be your best assistant in laboratory research.

**Feature**

1. Excellent fluorescence image with high resolution fluorescence objectives.
2. Protect the light leak with advanced lamp housing.
3. Excellent Optical Performance with Infinite Optical System.
4. Innovative Stand structure, Sharp Image Display, Convenient and Special for Viewing Incubating Cell Tissue.
5. More stable power supply, digital display and timer.

**Application**

BS-7000B Inverted Fluorescence is specifically designed for the observation of cell culture. It is widely used in disease examination, immune diagnosis and laboratory research.

**Specification**

Item	Specification	BS-7000B
Optical System	Infinite Optical System	•
Viewing Head	Seidentopf Trinocular Head Inclined at 30°, Interpupillary 48-75mm	•

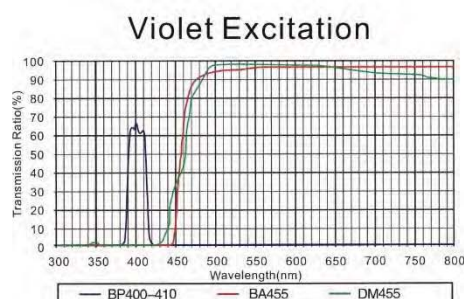
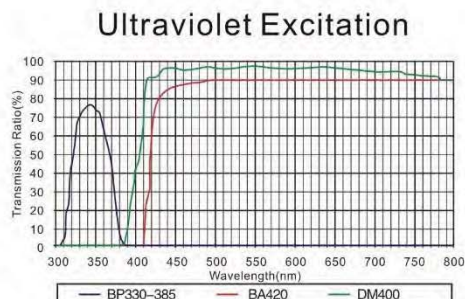
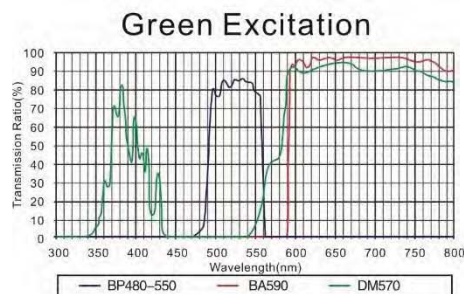
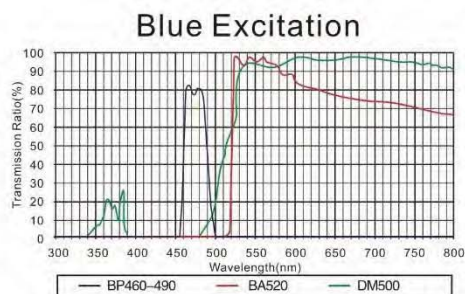
Eyepiece	High-point, Extra Wide Field Eyepiece EW10×/ 22				●
Nosepiece	Quintuple Nosepiece				●
Objective	LWD Infinite Plan Objective	4×/0.1, WD 17.3mm		●	
		10×/0.25, WD 10mm		○	
		20×/0.4, WD 5.1mm		○	
		40×/0.6, WD 2.1mm		●	
	Infinite Plan Phase Objective	PH 10×/0.25, WD 10mm		●	
		PH 20×/0.4, WD 5.1mm		●	
		PH 40×/0.6, WD 2.1mm		○	
	Infinite Plan Fluorescence Objective	4×/0.13, WD 16.3mm		○	
		10×/0.3, WD 12.4mm		○	
		20×/0.4, WD 1.5mm		○	
40×/0.6, WD 2.2mm		○			
Condenser	ELWD Condenser NA 0.3, LWD 72mm				●
Focusing	Coaxial Coarse and Fine Adjustment, Fine Division 0.002mm, Coarse Stroke 37.7mm per Rotation, Fine Stroke 0.2mm per Rotation, Moving Range up 8mm, down 3mm				●
Stage	Plain stage 160×250 mm				●
	Glass Insert				●
	Attachable Mechanical Stage, X- Y Coaxial Control, Moving Range 120×78 mm				○
	Auxiliary Stage 70×180mm				●
	Terasaki Holder				○
	φ35mm Petri Dish Holder				○
	φ54mm Slide Glass Holder				○
Illumination	Halogen Lamp 6V/ 30W				●
	3W LED				○
Filter	Blue/ Green and Frosted Glass Filter (Φ45mm)				●
Phase Annulus					●
Telescope	Centering Telescope(Φ30)				○
Photo Attachment	Photo Attachment for SLR Cameras				○
Video Adapter	Video Adapter with C Mount				○
Reflected Light Source		Excitation	Dichroic Mirror	Barrier Filter	
	Blue Excitation	BP460~490	DM500	BA520	●
	Blue Excitation(B1)	BP460~495	DM505	BA510-550	○
	Green Excitation	BP510~550	DM570	BA590	●
	Ultraviolet Excitation	BP330~385	DM400	BA420	○
	Violet Excitation	BP400~410	DM455	BA455	○
	Red Excitation	BP620~650	DM660	BA670-750	○
Lamp	100W HBO Ultra Hi-voltage Spherical Mercury Lamp				●
Protection barrier	Barrier to Resist the Ultraviolet Light				●
Power Supplier	Power Supplier NFP-1, 220V/ 110V interchangeable, Digital Display				●
Filter	Neutral ND25/ ND6 Filter				○
Centering Plate					●

Note: ● Standard Outfit, ○ Optional

BS-7000B Inverted Fluorescence Attachments



Characteristics of Mirror Units Wavelength



Sample Images

