

BS-4060RF Semiconductor FPD Inspection Microscope

BS-4060RF

Introduction

Equipped with 12-inch wafer holders, BS-4060 is professionally applied for wafer and flat panel display detection, maximally supports for dia. 300mm of wafer and 17 inches of FPD. More comfortable, flexible and quicker operation is available with upgraded ergonomics design.

Feature**1. Tilting viewing head**

0-35 ° tilting viewing head for adjusting the height of eye point, provides the best viewing angle to different users, relieving the fatigue from long-time operation and significantly improving the work efficiency.

2. Built-in handy and practical tool



All metal frame is steady but heavy. With a view to easy carry, BS-4060 is designed with two steel rods in the sides of the frame. Screwing them out and screwing them in in reverse, a lever for load bearing is formed. Special warning, please lock the stage on carrying.

3. Convenient and stable stage



The stage clutches driven system, button up for quick movement and press down to cancel, is available to allay fatigue from long-time operation. Stage with linear guide rail, is realizable to be lightly and smoothly moved.

4. Front operating buttons



BS-4060 adopts electric control for nosepiece and aperture diaphragm, with control buttons in the front. It is easy and convenient for operation, improving the working efficiency.

5. Shockproof frame



With six leveling feet, the metal frame of BS-4060 is low-centered, high-steady and anti-knock to ensure image stabilization.

6. Safe and high-speed electric nosepiece



With forward and backward two buttons for switch, it is quick to convert magnification and accurate to repeat position. Mechanical switch mode, effectively prolongs the service life of nosepiece.

7. Reflected illumination

Aperture diaphragm auto-matches different objectives. It is more convenient and efficient, providing the best imaging effect. Aperture diaphragm is auto-on under dark field, to simplify the operation.

Application



Specification

Item	Specification	BS-4060RF	BS-4060TRF	
Optical System	Infinity Color Corrected Optical System	●	●	
Viewing Head	0-35° adjustable, erect image, tilting trinocular head, interpupillary distance: 50-76mm, splitting ratio: 100:0 or 0:100	●	●	
Eyepiece	High eye point wide field plan eyepiece PL10X/25mm, with adjustable diopter	●	●	
	High eye point wide field plan eyepiece PL10X/25mm, with reticle and adjustable diopter	○	○	
Objectives	BD Semi-Apochromatic Metallurgical Objectives	5X/NA=0.15, WD=13.5mm	●	●
		10X/NA=0.3, WD=9mm	●	●
		20X/NA=0.5, WD=2.5mm	○	○
		50X/NA=0.8, WD=1mm	○	○
		100X/NA=0.9, WD=1mm	○	○
	Ultra-Long Working Distance BD Semi-Apochromatic Metallurgical Objectives	20X/NA=0.4, WD=8.5mm	●	●
	Infinity Long Working Distance BD Semi-Apochromatic Metallurgical Objectives	50X/NA=0.55, WD=7.5mm	●	●
		100X/NA=0.8, WD=2.1mm	○	○
		100X/NA=0.8, WD=3.5mm	○	○
	Bright Field Semi-Apochromatic Metallurgical Objectives	5X/NA=0.15, WD=19.5mm	○	○
		10X/NA=0.3, WD=10.9mm	○	○
		20X/NA=0.5, WD=3.2mm	○	○
50X/NA=0.8, WD=1.2mm		○	○	
100X/NA=0.9, WD=1mm		○	○	

	Ultra-Long Working Distance Bright Field Semi-Apochromatic Metallurgical Objectives	20X/NA=0.4, WD=8.8mm	○	○
Nosepiece	Electric sextuple BD nosepiece, with DIC slot		●	●
Frame & Illumination	Reflected frame with low position coaxial focusing mechanism, coarse range: 35mm, fine precision: 0.001mm, with upper limit and tension adjustment. Built-in 100-240V wide voltage system. Bright field/ dark field reflected illuminator, with electric variable aperture diaphragm, center adjustable; with switch device for bright field and dark field; with filter slot and polarizing slot; equipped with MvImage-Industry software and Dongle.		●	
	Transmitted & reflected frame with low position coaxial focusing mechanism, coarse range: 35mm, fine precision: 0.001mm, with upper limit and tension adjustment. Built-in 100-240V wide voltage system, 5W cool color LED transmission illumination system (warm color available), the upper and lower light can be independently controlled. Bright field/ dark field reflected illuminator, with electric variable aperture diaphragm, center adjustable; with switch device for bright field and dark field; with filter slot and polarizing slot; equipped with MvImage-Industry software and Dongle.			●
	Reflected frame with low position coaxial focusing mechanism, coarse range: 35mm, fine precision: 0.001mm, with upper limit and tension adjustment. Built-in 100-240V wide voltage system. Bright field/ dark field reflected illuminator, with electric variable aperture diaphragm, center adjustable; with switch device for bright field and dark field; with filter slot and polarizing slot; with 12V/10W LED light box, cool color (color temperature 4750-5500K); equipped with MvImage-Industry software and Dongle.		○	
	Halogen light box, 12V/100W, with center set, for transmitted and reflected use		●	●
	Halogen light, 12V/100W		●	●
	Stage	12*14 inches three-layer mechanical stage with low position coaxial adjustment, size: 420mm*710mm, moving range: 305mm*356mm, with clutch handle for quick movement. Metal plate for reflected use.		●
12*14 inches three-layer mechanical stage with low position coaxial adjustment, size: 420mm*710mm, moving range: 305mm*356mm, with clutch handle for quick movement. Glass plate for transmitted and reflected use.			●	
Polarizer and Analyzer	Polarizer and fixed analyzer		○	○
	Polarizer and 360 degree rotatable analyzer		●	●
Rotating Workbench	Rotating workbench. 12-inch wafer plate, for 6, 8, 12inch wafer		○	○
Interference Filter	Blue interference filter for reflected use: <=480nm		○	○
	Green interference filter for reflected use: 520nm-570nm		○	○
	Red interference filter for reflected use: 630nm-750nm		○	○

	Interference filter for reflected use, color balance plate (white light), suitable for halogen lamps	•	•
DIC	DIC kit, suitable for the objectives other than Infinity Long Working Distance BD Semi-Apochromatic Metallurgical Objectives	○	○
	DIC kit, suitable for Infinity Long Working Distance BD Semi-Apochromatic Metallurgical Objectives	○	○
Adapter	0.35X C-mount adapter, focus adjustable	○	○
	0.5X C-mount adapter, focus adjustable	○	○
	0.65X C-mount adapter, focus adjustable	•	•
	1X C-mount adapter, focus adjustable	○	○
Other	Internal hexagonal Spanner M4	•	•
Accessories	Internal hexagonal Spanner M6	•	•

Note: • Standard Outfit, ○ Optional

Accessories

1. Internationally advanced eyepiece with large field of view



10X/25mm eyepiece is plan and clear even at the edge of FOV, helpful to present more complete image of the sample.

2. Long working distance objectives



A whole set of professional semi-APO metallurgical objectives, adopt the lenses with high transmission and advanced coating technology.

Long working distance objectives for option, is efficient to prevent sample damage.

3. C-mount adapter



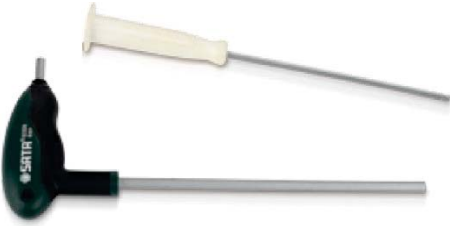
4. Interference filters



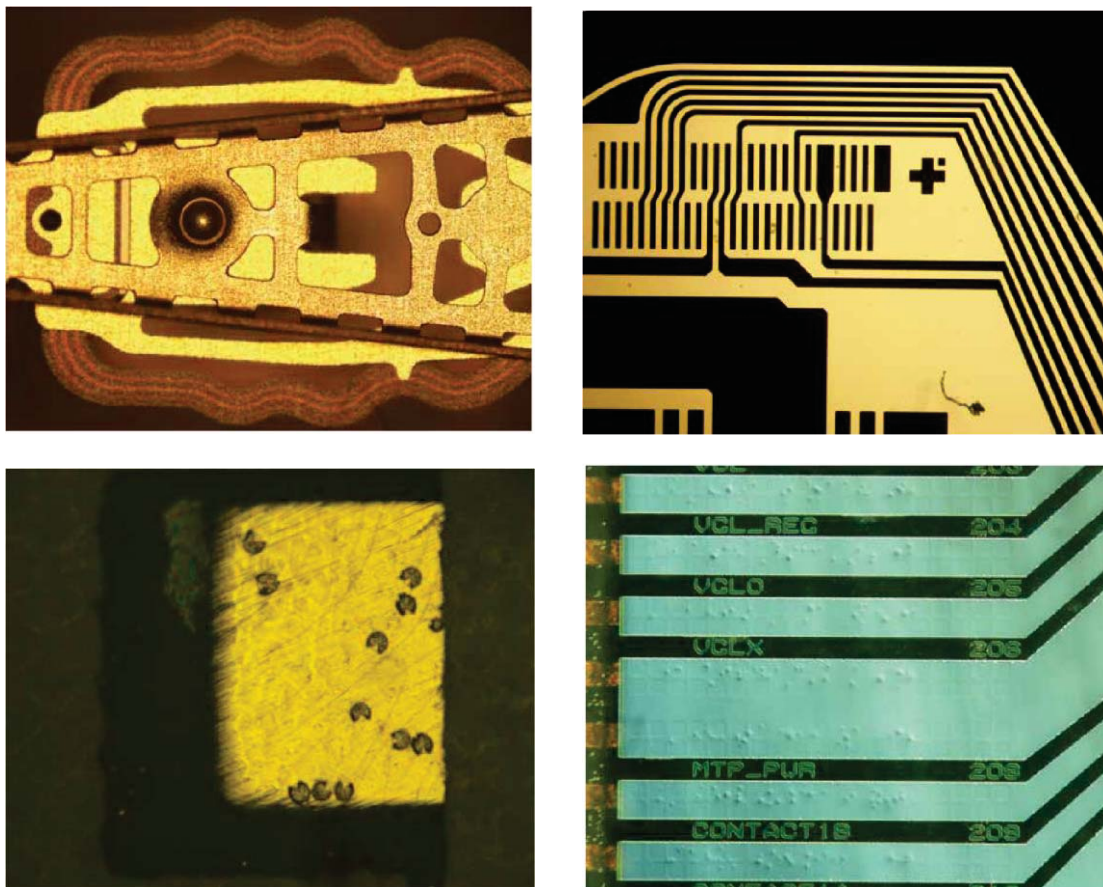
5. Polarizer and analyzer



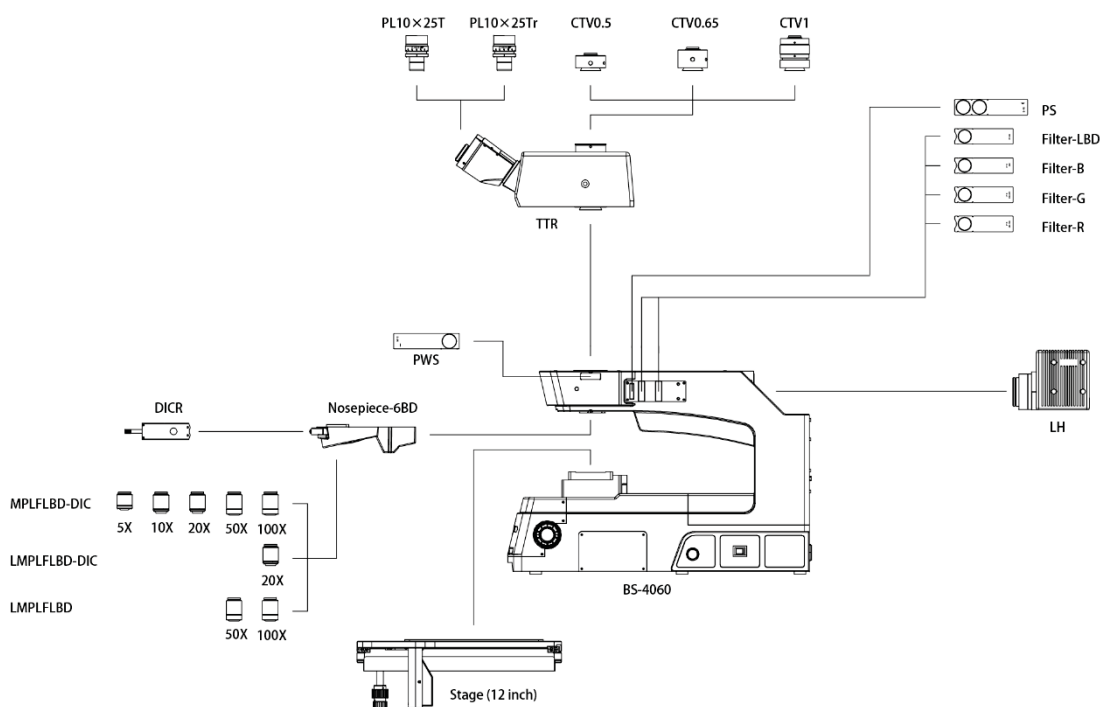
6. Other Accessories



Sample Image

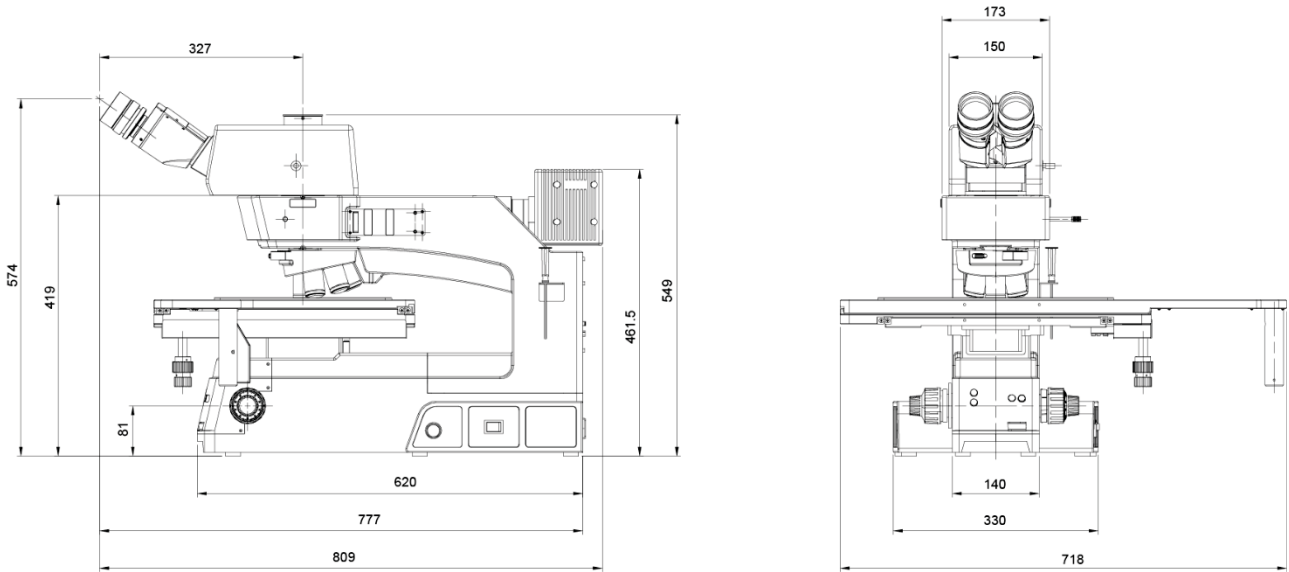


System Diagram



Dimension

The tilting head positioned at 35 degree



Unit: mm