

## BS-207X Series Biological Microscopes

- 1. " o " 'U . . . . .
- 2. " o " 'U . . . . .
- 3. " o " 'U . . . . .
- 4. " o k " 'U . . . . .
- 5. " o " 'U . . . . .

## BS-2070 Series Biological Microscope



BS-2070B

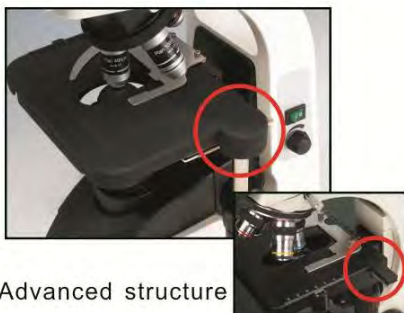


BS-2070T

### Introduction

BS-2070 series microscopes are high level microscopes which are specially designed for college education, medical and laboratory study. It adopts an Infinite optical system, beautiful structure and ergonomic design. With an innovative optical and structure design idea, excellent optical performance and easy to operate system, this biological microscope makes your works enjoyable.

### Features



Advanced structure

Traditional structure

1. Excellent image quality with infinite optical system.
2. Comfortable operating with ergonomic design.
3. Better illumination with sliding-in centerable condenser, convenient to replace phase contrast and dark field condenser.
4. Advanced design of mechanical stage structure prevents the scratches of users.

### Applications

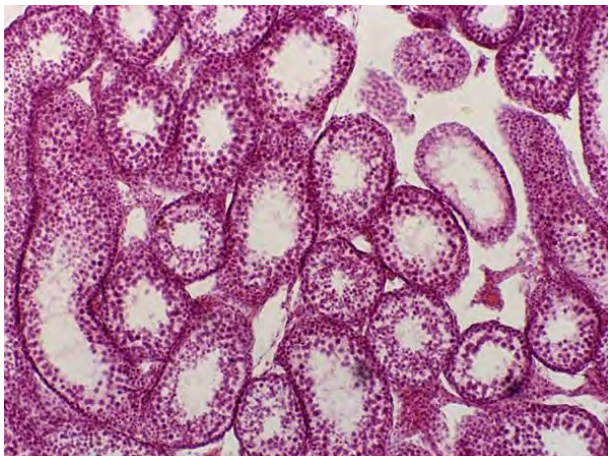
BS-2070 series microscopes are ideal instrument in biological, histological, pathological, bacteriology, immunizations and pharmacy field and can be widely used in medical and sanitary establishments, laboratories, institutes, academic laboratories, colleges and universities.

**Specifications**

Model		BS-2070B	BS-2070T
Optical System	Infinite Optical System	●	●
Viewing Head	Seidentopf Binocular Viewing Head, Inclined at 30°, 360° Rotatable, Interpupillary 48-75mm	●	
	Seidentopf Trinocular Viewing Head, Inclined at 30°, 360° Rotatable, Interpupillary 48-75mm		●
	Built-in Digital Camera, 3.0 Mega Pixels	○	○
Eyepiece	WF10×/20	●	●
	WF15×/16	○	○
	WF20×/12	○	○
Objective	Infinite Plan Achromatic Objective 4×(NA0.10, W.D.15.5mm), 10×(NA0.25, W.D.5.02mm), 40×(NA0.65,W.D.0.60mm), 100×(NA1.25, W.D.0.13mm)	●	●
	Infinite Plan Achromatic Objective 20×(NA0.40, W.D.0.81), 60×(NA0.80, W.D.0.27)	○	○
Nosepiece	Backward Quadruple Nosepiece	●	●
	Backward Quintuple Nosepiece	○	○
Focusing	Coaxial Coarse & Fine Adjustment, Fine Division 0.002mm, Coarse Stroke 37.7mm per Rotation	●	●
Stage	Rectangular 216×150mm, Cross Travel 78×54mm, Using Low-positioned X/ Y Coaxial Control Knob, Can Hold Two Sides	●	●
Condenser	Abbe Condenser NA1.25 with Aperture Diaphragm	●	●
Illumination	LED illumination 3W, brightness adjustable	●	●
	12V/20W Halogen Lamp, Brightness Adjustable	○	○
Optional	Photo attachment, Video attachment, Polarization set, Phase contrast kit	○	○
Dimension & G.W.	38cm*26cm*51cm, 9kg	●	●

Note: ●Standard Outfit, ○Optional

**Sample Images**



BS-2073 Series Biological Microscope



BS-2073B



BS-2073T



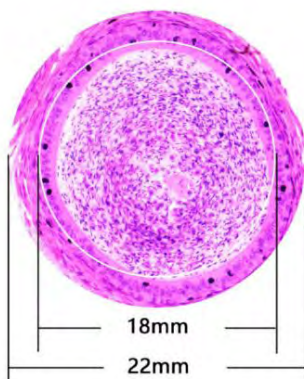
BS-2073FB(LED)

Introduction

BS-2073 series microscopes are high level microscopes which are specially designed for college education, medical and laboratory research. With excellent optical quality, large field of view, excellent objective lens performance, clear and reliable imaging. Ergonomically designed to provide better comfort and experience, focus on the user's operating habits, and constantly optimize the details. The modular design allows for various viewing modes such as brightfield, darkfield, fluorescence, and simple polarizing. The intelligent design makes the microscope teaching more flexible and the teaching effect is better. Low maintenance costs and environmentally friendly.

Features

1. Excellent Optical Design



- (1) NIS infinite Optical System. NIS infinite plan objectives can provide high contrast and very flat image up to FN22mm, the system always brings you sharp, high resolution and high signal to noise ratio imaging.
- (2) 22mm Wide Field of View. The microscopes achieve the wide field of 22mm view with 10× eyepieces. The eyepiece adopts a flat field distortion-free design to prevent the edge of the field from being imaginary and stray light.

(3) Various Observation methods. Besides bright field observation, dark field, fluorescent and simple polarizing observation methods are optional.

Observation Methods	Bright Field	Dark Field	Fluorescent	Simple Polarizing
	●	●	●	●



- (4) Multifunctional Universal Condenser. BS-2073 series microscopes adopt a universal condenser for bright field and dark field. The observation methods could be quickly switched by changing the dark field slider. The bright field slider is universal for 4x-100x objectives, simple and fast to use. The aperture diaphragm of the condenser is easily set to get exact value of diaphragm to correspond with different objectives.



- (5) LED EPI-Fluorescent Illumination. The LED EPI-Fluorescent Illumination is safe and convenient. There is no need to warm up or cool down, and also no need to align the bulb. The life time of LED bulb is up to 5000 hours. There are two filters position available and switch is fast and easy.

**2. Infinite Plan Objectives**

The BS-2073 series microscopes have been fully optimized for various of microscopic applications, especially for beginners and the users with long time operation. The objectives provide high quality images and are easy to use.



- (1) Plan Objective. With infinite plan objective, clear and flat image is over the entire field of view, image reproduction is better.
- (2) 100x Water-immersion Objective. Ordinary 100x oil-immersion objective needs to use cedar oil as the observation medium. After use, it needs to be cleaned with ether alcohol or xylene, which is easy to cause air pollution and improper cleaning. The water-immersion objective uses water as the medium, it is easy to clean, it also reduces the damage to the user's health and environmental pollution.

- (3) 40× LWD Objective. The working distance of 40× objective can be up to 1.5mm, avoiding the contamination from residual immersion oil or water when converted from 100× to 40× objective.

### 3. This is an unbounded microscope

Multifunctional digital head is optional, the user does not have to be confined in front of the microscope. Instead, it can be used for mobile microscope teaching and outdoor field observation through mobile terminals and external mobile power. The objective, eyepiece and observation tube have been effectively anti-mold treated, so it can ensure a consistently clear image and extend the life of the microscope, even when working in hot and humid environments.



- (1) Multifunctional Digital Head. The built-in camera, supporting Android, IOS, Windows operating system, wired and Wifi modes. Images can be output to the external device in real time, there is no data cable connection, the operator can move more freely.



- (2) Professional microscopic imaging software. Microscopic imaging observation, analysis and processing can be performed on external devices, including photographing, measurement, image adjustment, storage, synthesis, etc.

- (3) Perform image preview and processing by scan with Mobile devices. By scanning the QR code on the microscope, installing the APP and identifying the microscope, you can view the microscopic image on your phone and tablet.



- (4) External rechargeable battery can be used as the power source. A USB charging port is reserved on the back of the microscope, external rechargeable portable battery can be connected to this port and used as power source of the microscope. So this microscope can be used outdoor or during power outages.

### 4. Easier to store and transport

The microscope is compact and can be placed in an ordinary classroom closet. It has a special carrying handle, and it is also light weight and stable. There is a cord rest on back of the microscope to store the long power cord, improve the cleanliness of the laboratory and reduce the tripping accident which may be caused by the long power cord during the carrying process. The wooden storage box is optional, it is very convenient for storage and carrying.



**5. Ergonomic Design**

In daily scientific research teaching and pathological diagnosis, working in front of the microscope for a long time has become normal, this always leads to fatigue and physical discomfort, thereby reducing work efficiency. BS-2073 series microscopes have adopted high eye-point, low-hand focus mechanism, low-hand stage and other ergonomic designs to ensure the user can perform microscope operation in the most comfortable situation. The focus knob, illumination control knob and stage handle are all proximal. The user can put both hands on the table while working, and can operate the microscope with minimal movement.



**Application**

BS-2073 series microscopes are ideal instrument in biological, histological, pathological, bacteriology, immunizations and pharmacy field and can be widely used in medical and sanitary establishments, laboratories, institutes, academic laboratories, colleges and universities.

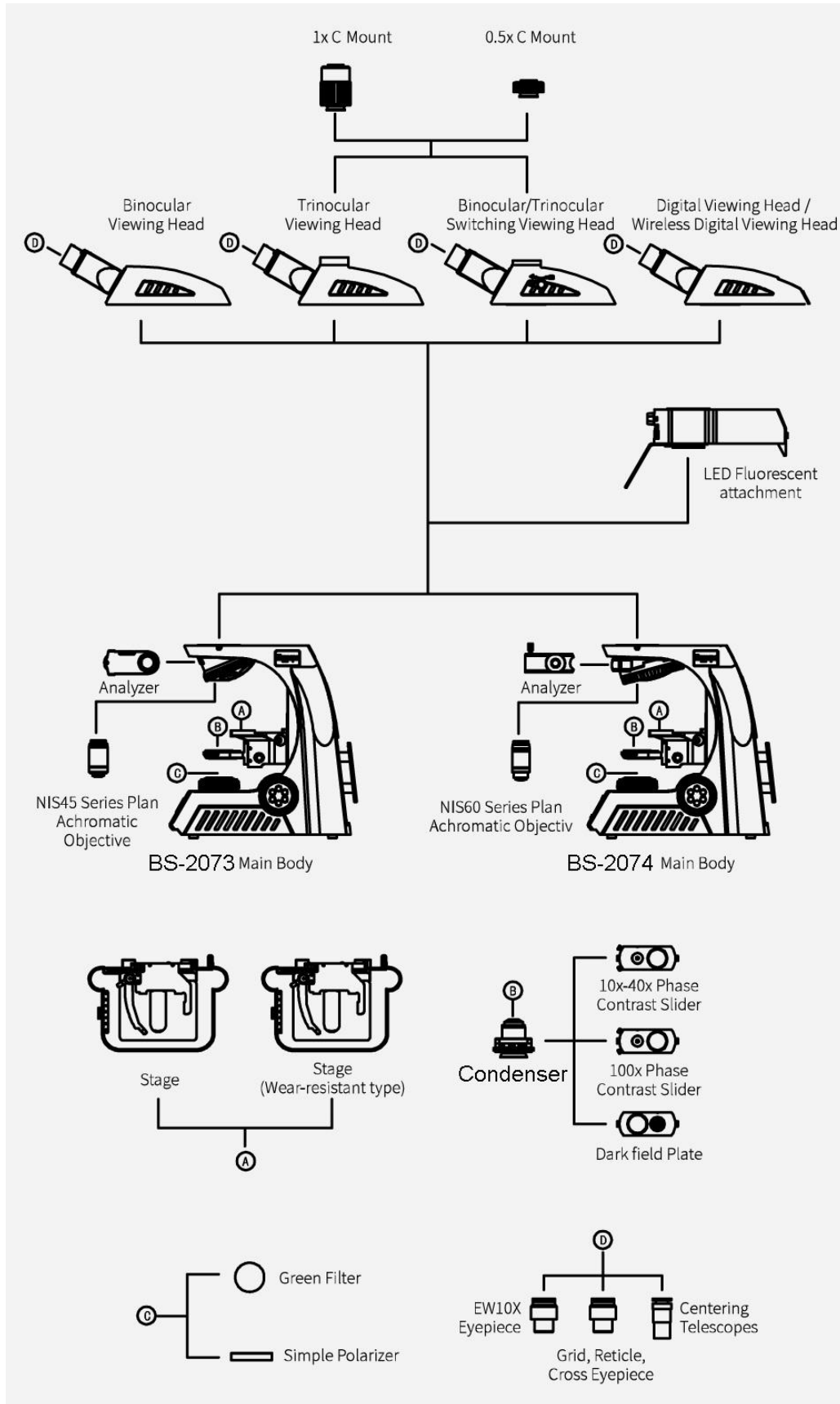
**Specification**

Item	Specification	BS-2073B	BS-2073T
Optical System	Infinite Optical System	•	•
Eyepiece	Extra wide field eyepiece EW10×/22mm	•	•

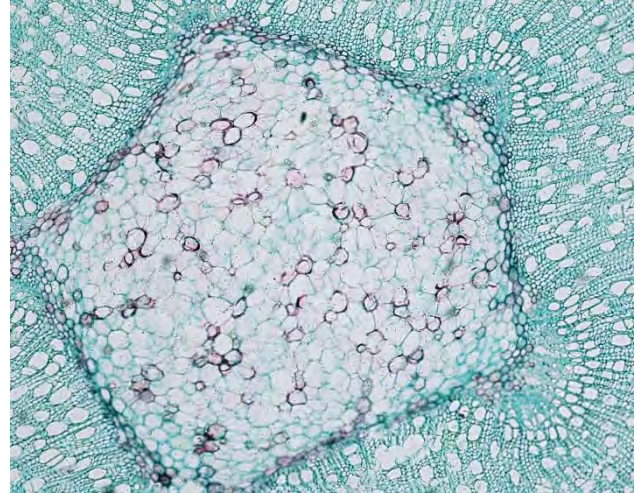
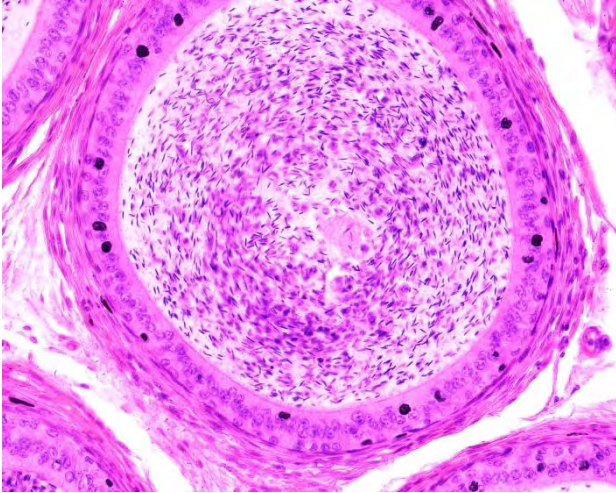
	Wide field eyepiece WF15×/16	○	○
	Wide field eyepiece WF20×/12	○	○
Viewing Head	Seidentopf binocular viewing head, inclined at 30°, 360° rotatable, interpupillary 47-78mm, anti-fungus, tube diameter 30mm	●	
	Seidentopf trinocular viewing head, inclined at 30°, 360° rotatable, interpupillary 47-78mm, splitting ratio 5:5, anti-fungus, tube diameter 30mm		●
	Seidentopf binocular viewing head with built-in 5.0mp digital camera, usb2.0 output interface, inclined at 30°, 360° rotatable, interpupillary 47-78mm, anti-fungus, tube diameter 30mm	○	○
	Seidentopf binocular viewing head with built-in 5.0mp digital camera, HDMI and Wifi output interface, inclined at 30°, 360° rotatable, interpupillary 47-78mm, anti-fungus, tube diameter 30mm	○	○
Objective	NIS45 Infinite Plan Achromatic Objective 4× (N.A.:0.10, W.D.:20.6mm)	●	●
	NIS45 Infinite Plan Achromatic Objective 10× (N.A.:0.25, W.D.:18.0mm)	●	●
	NIS45 Infinite Plan Achromatic Objective 40× (N.A.:0.65, W.D.:1.5mm)	●	●
	NIS45 Infinite Plan Achromatic Objective 100× (Oil, N.A.:1.25, W.D.:0.16mm)	●	●
	NIS45 Infinite Plan Achromatic Objective 20× (N.A.:0.40, W.D.:6.4mm)	○	○
	NIS45 Infinite Plan Achromatic Objective 60× (N.A.:0.80, W.D.:0.3mm)	○	○
	NIS45 Infinite Plan Achromatic Objective 100× (Water, N.A.:1.10, W.D.:0.2mm)	○	○
Nosepiece	Backward quintuple nosepiece	●	●
Stage	Rackless stage, size 230mm*150mm, moving range 78mm*54mm	●	●
Condenser	Inserted abbe condenser NA1.25 (Including empty plate)	●	●
	Bright field-dark field plate	○	○
Focusing	Coaxial coarse and fine adjustment, coarse stroke 37.7mm per rotation, fine stroke 0.2mm per rotation, fine division 0.002mm, moving range 30mm	●	●
Illumination	1W LED illumination, brightness adjustable	●	●
Fluorescent Attachment	3W LED, two filter cubes (B, B1, G, U, V, R, Auramine O can be combined), fly-eye lens illumination	○	○
Other Accessories	1× C-mount adapter	○	○
	0.5× C-mount adapter	○	○
	Simple polarization set	○	○
	Digital Camera	○	○
Filter	Green	○	○
	Blue, Yellow, Red	○	○
Package	1pc/carton, Carton size: 48cm*33cm*60cm, Net/Gross Weight: 10.5kg/12.5kg	●	●

Note: ●Standard Outfit, ○Optional

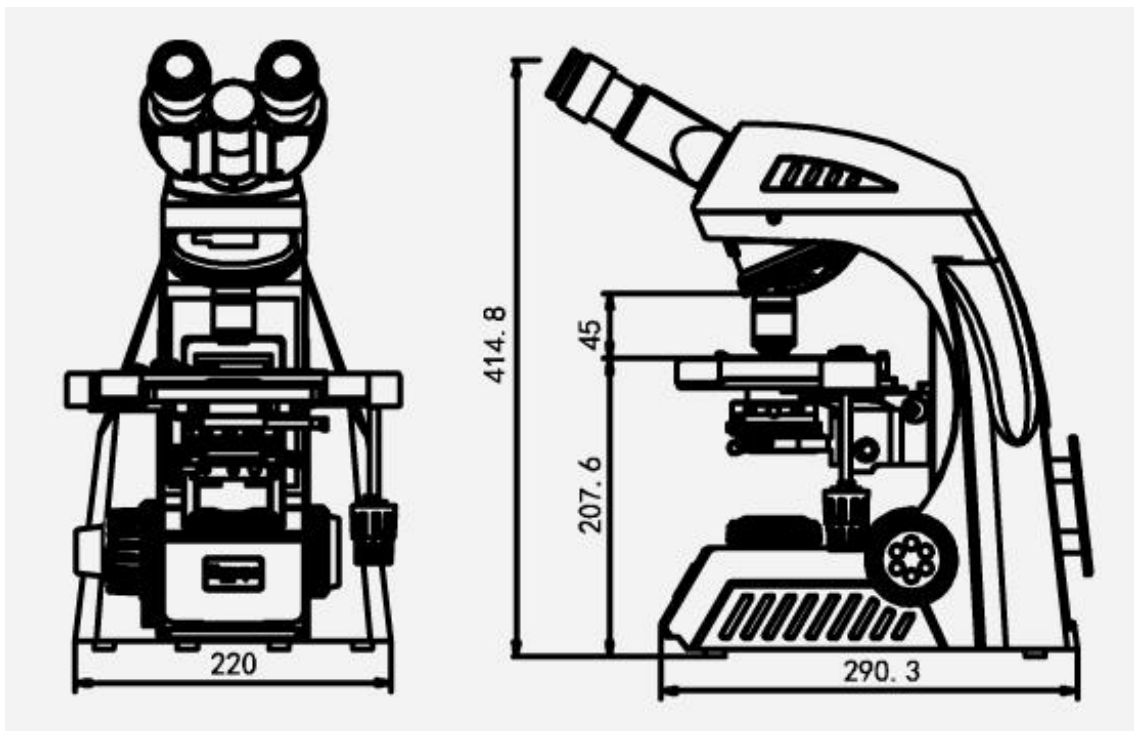
System Diagram



Sample Image



Dimension



Unit:mm

BS-2074 Series Biological Microscope



BS-2074B



BS-2074T



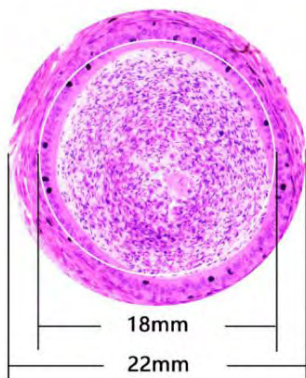
BS-2074FB(LED)

Introduction

BS-2074 series microscopes are high level microscopes which are specially designed for college education, medical and laboratory research. With excellent optical quality, large field of view, excellent objective lens performance, clear and reliable imaging. Ergonomically designed to provide better comfort and experience, focus on the user's operating habits, and constantly optimize the details. The modular design allows for various viewing modes such as brightfield, darkfield, phase contrast, fluorescence and simple polarizing. The intelligent design makes the microscope teaching more flexible and the teaching effect is better. Low maintenance costs and environmentally friendly.

Features

1. Excellent Optical Design



- (1) NIS infinite Optical System. NIS infinite plan objectives can provide high contrast and very flat image up to FN22mm, the system always brings you sharp, high resolution and high signal to noise ratio imaging.
- (2) 22mm Wide Field of View. The microscopes achieve the wide field of 22mm view with 10× eyepieces. The eyepiece adopts a flat field distortion-free design to prevent the edge of the field from being imaginary and stray light.

(3) Various Observation methods. Besides bright field observation, dark field, phase contrast, fluorescent and simple polarizing observation methods are optional.

Observation Methods	Bright Field	Dark Field	Phase Contrast	Fluorescent	Simple Polarizing
	●	●	●	●	●



- (4) Multifunctional Universal Condenser. BS-2074 series microscopes adopt a universal condenser for bright field, dark field and phase contrast. The observation methods could be quickly switched by changing the dark field and phase contrast slider. The phase contrast and bright field slider is universal for 4x-100x objectives, simple and fast to use. The aperture diaphragm of the condenser is easily set to get exact value of diaphragm to correspond with different objectives.



- (5) LED EPI-Fluorescent Illumination. The LED EPI-Fluorescent Illumination is safe and convenient. There is no need to warm up or cool down, and also no need to align the bulb. The life time of LED bulb is up to 5000 hours. There are two filters position available and switch is fast and easy.

**2. Infinite Plan Objectives**

The BS-2074 series microscopes have been fully optimized for various of microscopic applications, especially for beginners and the users with long time operation. The objectives provide high quality images and are easy to use.



- (1) Plan Objective. With infinite plan objective, clear and flat image is over the entire field of view, image reproduction is better.
- (2) 100x Water-immersion Objective. Ordinary 100x oil-immersion objective needs to use cedar oil as the observation medium. After use, it needs to be cleaned with ether alcohol or xylene, which is easy to cause air pollution and improper cleaning. The water-immersion objective uses water as the medium, it is easy to clean, it also reduces the damage to the user's health and environmental pollution.

- (3) 40× LWD Objective. The working distance of 40× objective can be up to 1.5mm, avoiding the contamination from residual immersion oil or water when converted from 100× to 40× objective.

### 3. This is an unbounded microscope

Multifunctional digital head is optional, the user does not have to be confined in front of the microscope. Instead, it can be used for mobile microscope teaching and outdoor field observation through mobile terminals and external mobile power. The objective, eyepiece and observation tube have been effectively anti-mold treated, so it can ensure a consistently clear image and extend the life of the microscope, even when working in hot and humid environments.



- (1) Multifunctional Digital Head. The built-in camera, supporting Android, IOS, Windows operating system, wired and Wifi modes. Images can be output to the external device in real time, there is no data cable connection, the operator can move more freely.



- (2) Professional microscopic imaging software. Microscopic imaging observation, analysis and processing can be performed on external devices, including photographing, measurement, image adjustment, storage, synthesis, etc.

- (3) Perform image preview and processing by scanning with Mobile devices. By scanning the QR code or microscope, installing the APP and identifying the microscope, you can view the microscopic image on your phone and tablet.

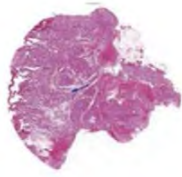


- (4) External rechargeable battery can be used as the power source. A USB charging port is reserved on the back of the microscope, external rechargeable portable battery can be connected to this port and used as power source of the microscope. So this microscope can be used outdoor or during power outages.

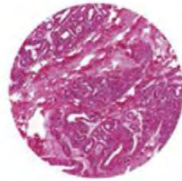
### 4. Intelligent operating system

- (1) Coded Nosepiece.

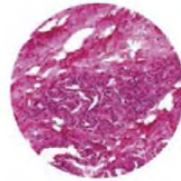
The BS-2074 series microscope can memorize the illumination brightness when using each objective. When the objective has been changed, the light intensity will be automatically adjusted to reduce visual fatigue and improve work efficiency.



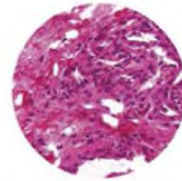
4X



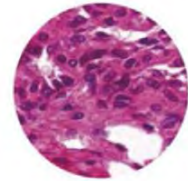
10X



20X



40X



100X



- (2) Use a dimming knob to achieve multiple functions.
  - One Click: Enter standby status
  - Double Clicks: Light lock or unlock
  - Rotation: Adjust brightness
  - Press + Up-spin: Switch to the upper light source
  - Press + Down-spin: Switch to the under light source
  - Press 3 seconds: Set the time of turning off the light after leaving

- (3) The display of microscope working status.

The LCD on the front of the microscope can display the working status of the microscope, including magnification, light intensity, sleepy model and so on.



Start& working mode



Lock mode



ECO mode



Sleep mode

### 5. Easier to store and transport

The microscope is compact and can be placed in an ordinary classroom closet. It has a special carrying handle, and it is also light weight and stable. There is a cord rest on back of the microscope to store the long power cord, improve the cleanliness of the laboratory and reduce the tripping accident which may be caused by the long power cord during the carrying process. The wooden storage box is optional, it is very convenient for storage and carrying.



**6. Ergonomic Design**

In daily scientific research teaching and pathological diagnosis, working in front of the microscope for a long time has become normal, this always leads to fatigue and physical discomfort, thereby reducing work efficiency. BS-2074 series microscopes have adopted high eye-point, low-hand focus mechanism, low-hand stage and other ergonomic designs to ensure the user can perform microscope operation in the most comfortable situation. The focus knob, illumination control knob and stage handle are all proximal. The user can put both hands on the table while working, and can operate the microscope with minimal movement.



**Application**

BS-2074 series microscopes are ideal instrument in biological, histological, pathological, bacteriology, immunizations and pharmacy field and can be widely used in medical and sanitary establishments, laboratories, institutes, academic laboratories, colleges and universities.

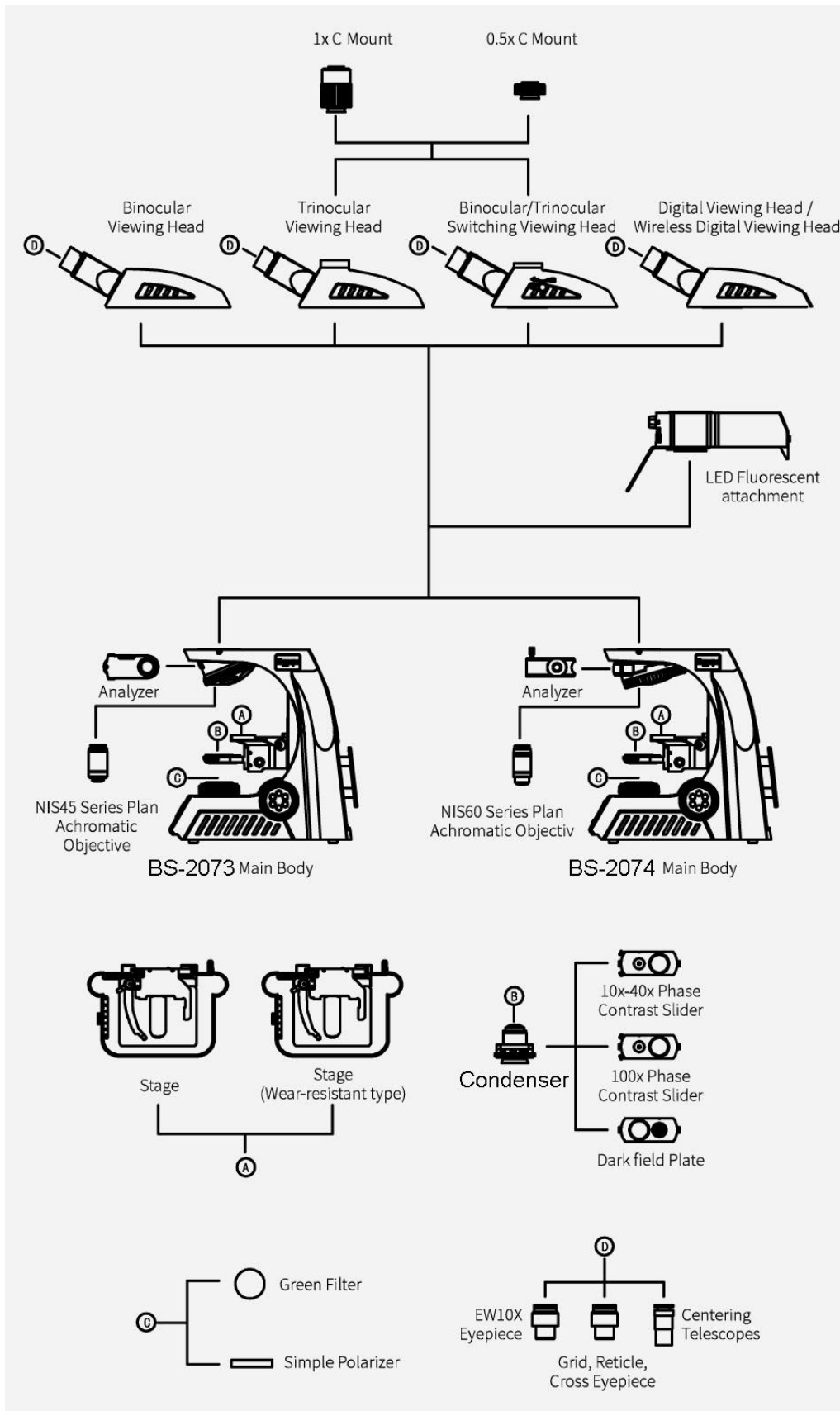
**Specification**

Item	Specification	BS-2074B	BS-2074T
Optical System	Infinite Optical System	•	•
Eyepiece	Extra wide field eyepiece EW10x/22mm	•	•

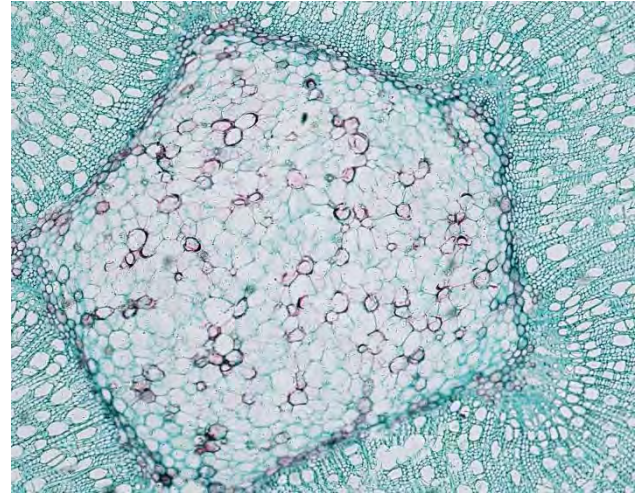
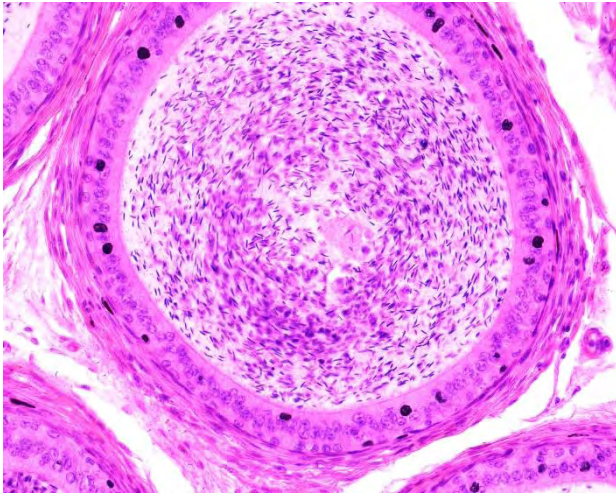
	Wide field eyepiece WF15×/16mm	○	○
	Wide Field Eyepiece WF20×/12mm	○	○
Viewing Head	Seidentopf binocular viewing head, inclined at 30°, 360° rotatable, interpupillary 47-78mm, anti-fungus, tube diameter 30mm	●	
	Seidentopf trinocular viewing head, inclined at 30°, 360° rotatable, interpupillary 47-78mm, splitting ratio 5:5, anti-fungus, tube diameter 30mm		●
	Seidentopf binocular viewing head with built-in 5.0mp digital camera, HDMI and WIFI output interface, inclined at 30°, 360° rotatable, interpupillary 47-78mm, anti-fungus, tube diameter 30mm	○	○
Objective	NIS60 Infinite Plan Achromatic Objective 4× (N.A.:0.10, W.D.:30mm)	●	●
	NIS60 Infinite Plan Achromatic Objective 10× (N.A.:0.25, W.D.:10.2mm)	●	●
	NIS60 Infinite Plan Achromatic Objective 40× (N.A.:0.65, W.D.:1.5mm)	●	●
	NIS60 Infinite Plan Achromatic Objective 100× (Water, N.A.:1.10, W.D.:0.2mm)	○	○
	NIS60 Infinite Plan Achromatic Objective 20× (N.A.:0.40, W.D.:4.0mm)	○	○
	NIS60 Infinite Plan Achromatic Objective 60× (N.A.:0.80, W.D.:0.3mm)	○	○
	NIS60 Infinite Plan Achromatic Objective 100× (Oil, N.A.:1.25, W.D.:0.3mm)	●	●
	NIS60 Infinite Plan Phase Contrast Achromatic Objective 10×, 20×, 40×, 100×	○	○
	NIS60 Infinite Plan Semi-APO Fluorescent Objectives 4×, 10×, 20×, 40×, 100×	○	○
Nosepiece	Backward quintuple nosepiece (Coding)	●	●
Stage	Rackless stage, size 230×150mm, moving range 78×54mm	●	●
Condenser	Inserted abbe condenser NA1.25 (Including empty plate)	●	●
	Bright field-phase contrast plate (4X-100X universal)	○	○
	Bright field-dark field plate	○	○
Focusing	Coaxial coarse and fine adjustment, coarse stroke 37.7mm per rotation, fine stroke 0.2mm per rotation, fine division 0.002mm, moving range 30mm	●	●
Illumination	3W S-LED (LCD display magnification, timing sleep, brightness indication and lock, etc.)	●	●
Fluorescent Attachment	3W LED, two filter cubes (B, G, U, V, R, Auramine O can be combined), fly-eye lens illumination	○	○
Other Accessories	1× C-mount adapter	○	○
	0.5× C-mount adapter	○	○
	Simple polarization set	○	○
	Digital camera	○	○
Filter	Green	○	○
	Blue, Yellow, Red	○	○
Package	1pc/carton, Carton size: 48cm*33cm*60cm, Net/Gross Weight: 10.5kg/12.5kg	●	●

Note: ●Standard Outfit, ○Optional

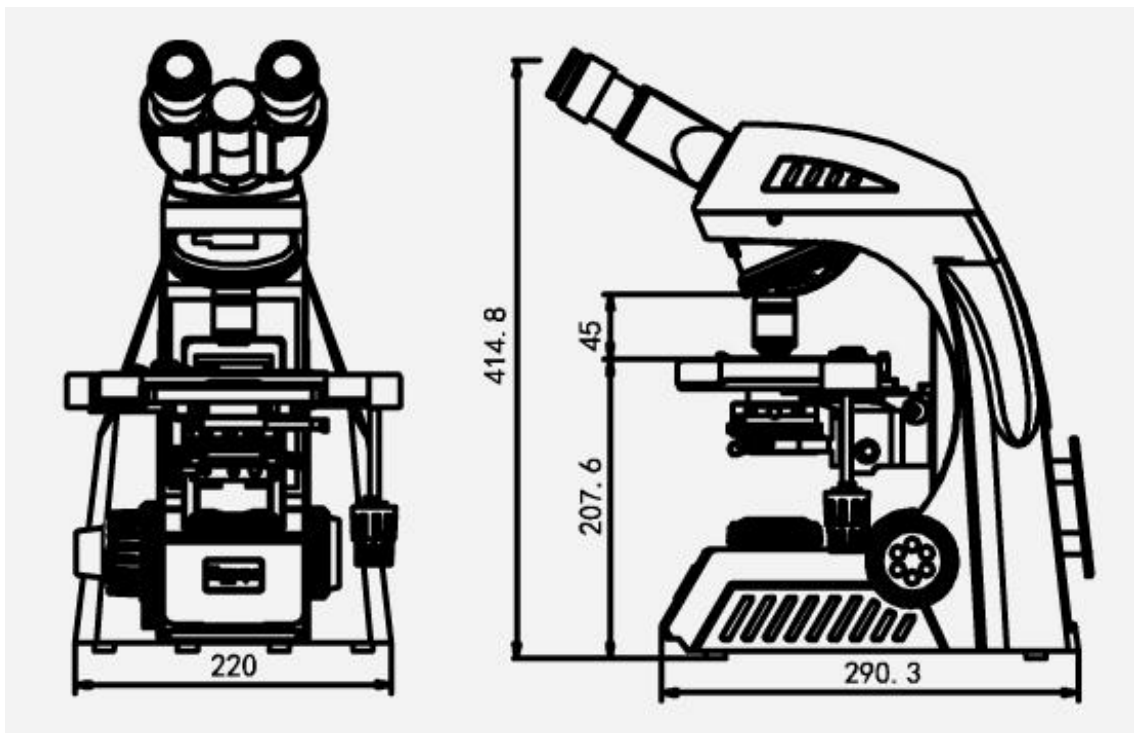
System Diagram



Sample Image



Dimension



Unit: mm

**BS-2076 Series Research Biological Microscope**

BS-2076T

**Introduction**

The latest BS-2076 series microscopes are designed for professional laboratory microscopic observation. On the one hand it has upgraded optical system, NIS infinity optics system provides excellent extendibility for this microscope, high numerical aperture (NA) plan achromatic objective and various types of optical components which have adopted multilayer coating technology could ensure the high image quality. On the other hand, improving comfort and operation convenience continuously, and the LCD screen in front of the microscope displays real-time working status of microscope, universal condenser, stopper that can be used to set the upper limit of the stage height etc., these structures ensure that even beginners can use it smoothly. Ergonomic design helps you to stay focused for longer by reducing the strain on your body, which is the best choice for scientific research experimenters and medical examiners for microscopic observation.

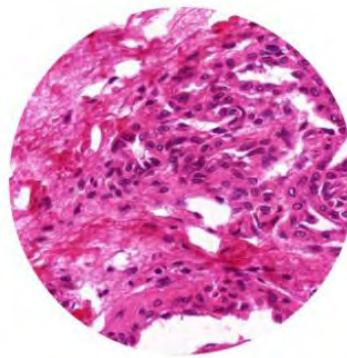
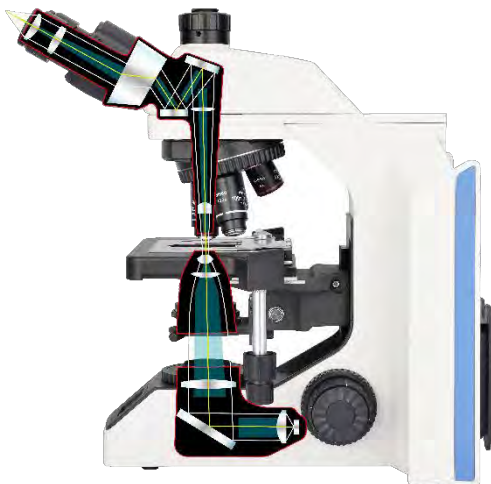
**Features****1. High quality Infinite Plan Achromatic Objectives.**

BS-2076 has adopted NIS series infinite plan achromatic objectives, which feature flat, sharp images up to the periphery of the field of view. High numerical aperture(NA) and long working distances, high resolution, can restore the real colors and realize accurate observation of samples.

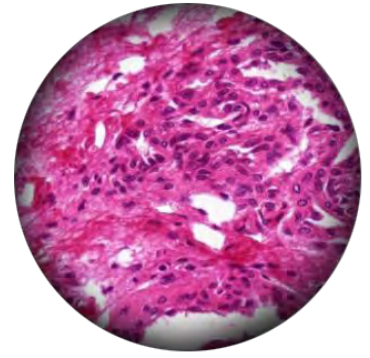


**2. Kohler illumination, uniform brightness throughout the field of view.**

Adding a Kohler mirror in front of light source to provide bright and uniform field of view. Work together with the infinite optical system and high-resolution objective, provides you perfect microscopic imaging.



Kohler Illumination



Critical Illumination

**3. Comfortable and worry-free focus knob.**

Low position focus knob design, different areas on the specimen slide can be easily explored while resting your hands on the table, with adjustable torque could improve comfort. BS-2076 is equipped with a stopper that can be used to set the upper limit of the stage height, the stage stops at the set height even when the focus knob is turned, thereby eliminating the risk of over-focusing and breaking the slides or damaging the objectives.



#### 4. Put slide by one hand.

Slides can be quickly slid in and out with one hand. The universal sample holder is suitable for a variety of slide types, such as Hemocytometer.



#### 5. Easy-to-rotate coded quintuple nosepiece.

High-precision machining ensures smoothness and durability in use. The coded nosepiece features an easy grip for smooth rotation, and accommodates up to five objectives, users can also choose 2X objective with large field of view, phase contrast and semi-APO objectives.



#### 6. Uniform and stable brightness.

The LED light source with color temperature adjustment function, which could produce daylight lighting conditions, so that the sample presents a natural color. The designed life span of LED lamp is 50,000 hours, which not only reduces maintenance costs, but also keeps the brightness stable during use.

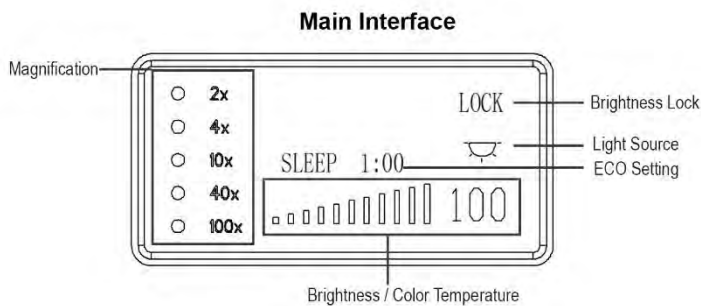
#### 7. Universal condenser is more convenient to use.

Users can switch from 4X to 100X without moving the top lens. Contrast adjustment is performed by adjusting the iris diaphragm.



**8. Working status display.**

Working status including magnification, brightness, color temperature, stand by status are shown on the LCD screen which is in front of microscope.

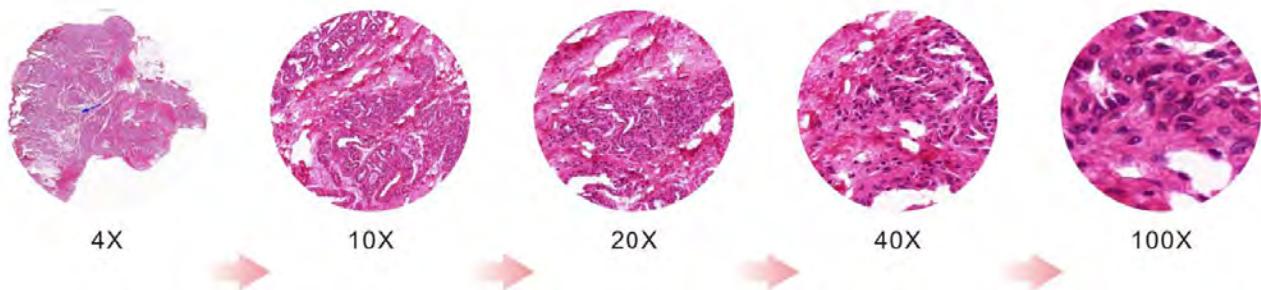


**9. Smart illumination management design.**

Longtime microscope observation requires frequent magnification switching, brightness adjustment, color temperature adjustment, etc. BS-2076 simplifies these repetitive mechanical operations and displays status on the LCD to improve work efficiency and provide comfortable operation experience.

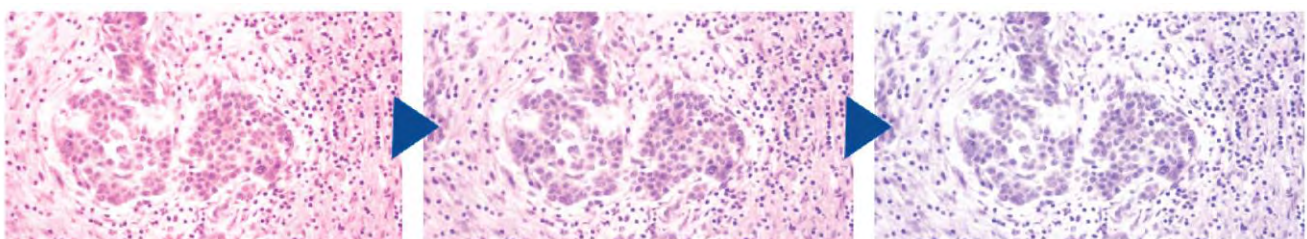
**(1) Maintains comfortable brightness when switching magnifications.**

BS-2076 features intelligent Light Intensity Management which automatically remembers and sets the light intensity level for each objective, with this function, users can increase comfort and save time when it requires frequent magnification changes.



**(2) Color temperature adjustable.**

With color temperature adjustment function, the LED light source produces daylight lighting conditions, so that the sample presents a natural color. Since the color temperature can be changed according to observation demand, the brightness and color temperature could keep users feel comfortable.



**(3) Realize various functions with one brightness control knob.**

- \*Single click: enter standby status
- \*Double click: light intensity lock or unlock
- \*Rotate: adjust brightness
- \*Press and rotate up direction: adjust brightness
- \*Press and rotate down direction: adjust color temperature
- \*Hold the press for 3s: setting ECO

#### **(4) Automatically power off after a period of inactivity.**

BS-2076 is equipped with an ECO mode which automatically turns off the illumination after a certain period of inactivity, the length of the inactivity period is adjustable, with ECO mode, it helps you save power and extend microscope life.

#### **10. Easier transportation and storage.**

BS-2076 is equipped with a special handle, which is light and stable. Its back board is designed with a hub device, which effectively accommodates excessive long power cords and improves cleanliness of the laboratory. At the same time, it also reduces trip accidents caused by excessive long power cords during transportation.



## **Application**

BS-2076 series research microscopes are ideal instruments in biological, histological, pathological, bacteriological, hematological, immunological, pharmaceutical and life science fields, they could be widely used in medical and sanitary establishments, laboratories, institutes, academic laboratories, colleges and universities for teaching, research and examinations.

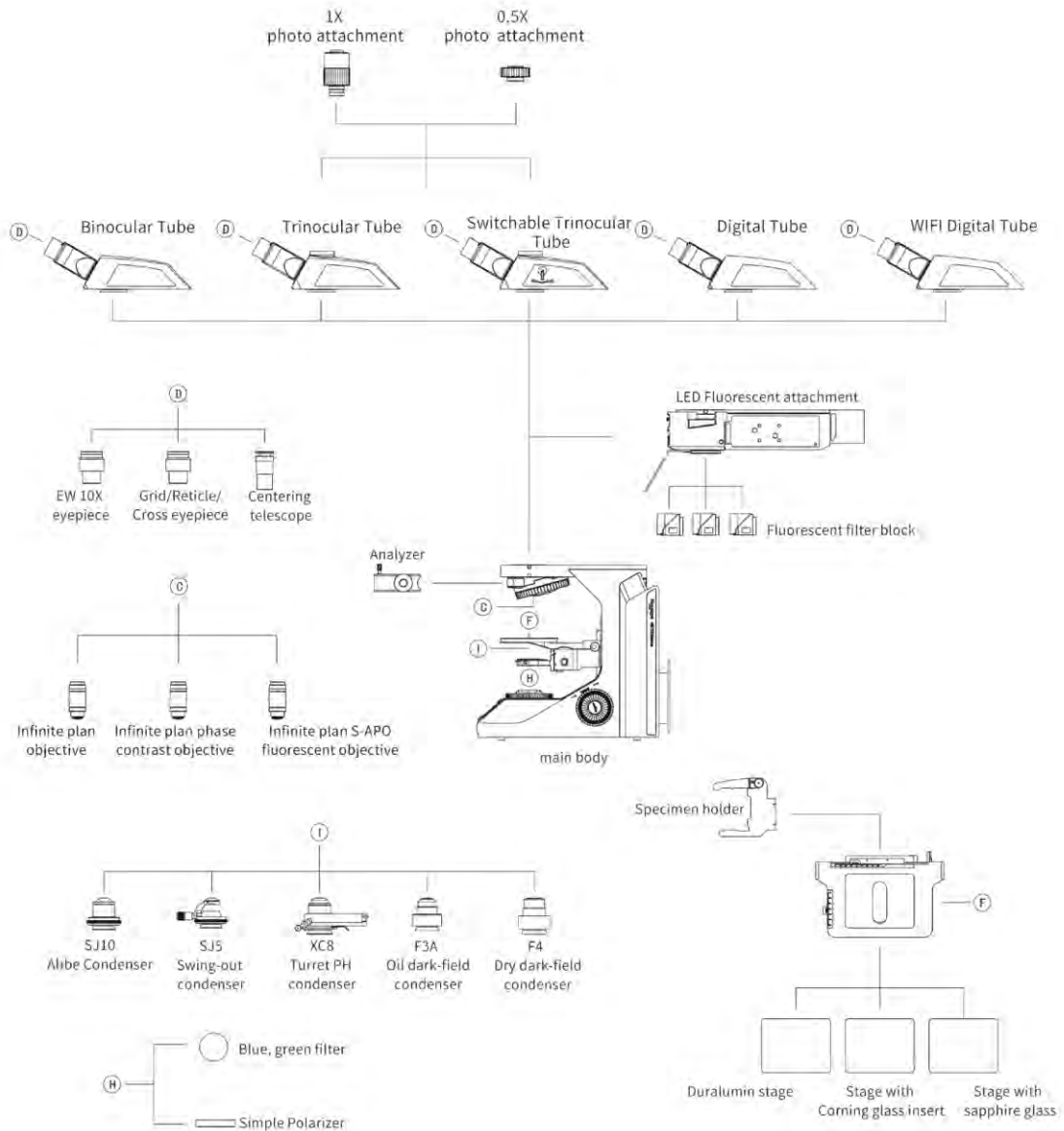
**Specification**

Item	Specification	BS-2076B	BS-2076T	
Optical System	NIS60 Infinite Color Corrected Optical System	●	●	
Viewing Head	Seidentopf Binocular Head, 30° inclined, 360° rotation, interpupillary distance: 47mm-78mm	●	○	
	Seidentopf Trinocular Head, 30° inclined, interpupillary distance: 47mm-78mm; splitting ratio(fixed): Eyepiece:Trinocular=50:50	○	●	
	Seidentopf Trinocular Head, 30° inclined, interpupillary distance: 47mm-78mm; splitting ratio(adjustable): Eyepiece:Trinocular=100:0/0:100	○	○	
	Ergo Tilting Seidentopf Binocular Head, adjustable 0-35° inclined, interpupillary distance: 47mm-78mm	○	○	
	Ergo Tilting Trinocular Head, adjustable 0-35° inclined, interpupillary distance 47mm-78mm; splitting ratio Eyepiece:Trinocular=100:0 or 20:80 or 0:100	○	○	
	Seidentopf Binocular Head with built-in USB2.0 digital camera, 30° inclined, 360° rotation, interpupillary distance: 47mm-78mm	○	○	
	Seidentopf Binocular Head with built-in WIFI & HDMI digital camera, 30° inclined, 360° rotation, interpupillary distance: 47mm-78mm	○	○	
Eyepiece	Super wide field plan eyepiece SW10X/22mm, diopter adjustable	●	●	
	Extra wide field plan eyepiece EW12.5X/17.5mm, diopter adjustable	○	○	
	Wide field plan eyepiece WF15X/16mm, diopter adjustable	○	○	
	Wide field plan eyepiece WF20X/12mm, diopter adjustable	○	○	
Objective	Infinite Plan Achromatic Objective	N-PLN 2X/NA=0.06, WD=7.5mm	○	○
		N-PLN 4X/NA=0.10, WD=30mm	●	●
		N-PLN 10X/NA=0.25, WD=10.2mm	●	●
		N-PLN 20X/NA=0.40, WD=12mm	●	●
		N-PLN 40X/NA=0.65, WD=0.7mm	●	●
		N-PLN 100X(Oil)/NA=1.25, WD=0.2mm	●	●
		N-PLN 50X(Oil)/NA=0.95, WD=0.19mm	○	○
		N-PLN 60X/NA=0.80, WD=0.3mm	○	○
		N-PLN-I 100X (Oil, with Iris Diaphragm)/NA=0.5-1.25, WD=0.2mm	○	○
		N-PLN 100X(Water)/NA=1.10, WD=0.2mm	○	○
	Infinite Plan Phase Contrast Objective	N-PLN PH 10X/NA=0.25, WD=10.2mm	○	○
		N-PLN PH 20X/NA=0.40, WD=12mm	○	○
		N-PLN PH 40X/NA=0.65, WD=0.7mm	○	○
		N-PLN PH 100X(Oil)/NA=1.25, WD=0.2mm	○	○
	Infinite Plan Semi-apochromatic Fluorescent Objective	N-PLFN 4X/NA=0.13, WD=17.2mm	○	○
		N-PLFN 10X/NA=0.30, WD=16.0mm	○	○
		N-PLFN 20X/NA=0.50, WD=2.1mm	○	○
		N-PLFN 40X/NA=0.75, WD=1.5mm	○	○
		N-PLFN 100X(Oil)/NA=1.4, WD=0.16mm	○	○
Nosepiece	Backward Quintuple Coded Nosepiece (with DIC slot)	●	●	

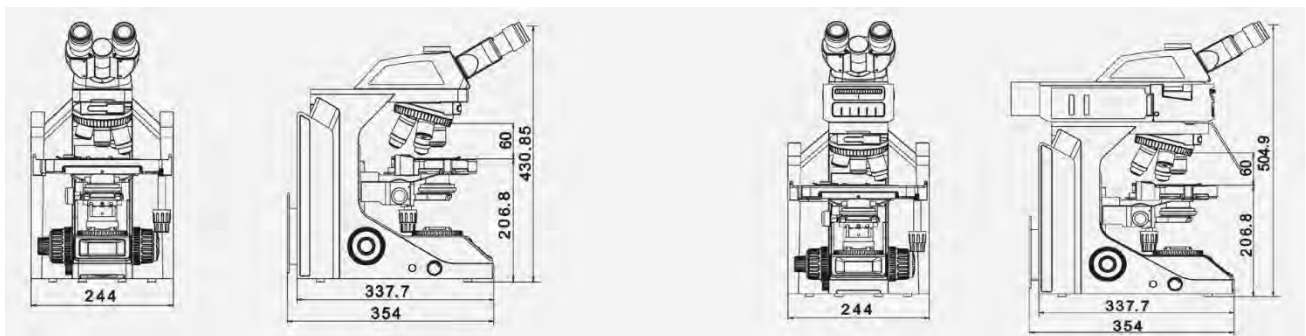
Condenser	Abbe Condenser N.A.0.9, with Iris diaphragm	●	●
	Swing-out achromatic condenser N.A.0.9/0.25, with Iris diaphragm	○	○
	NA1.25 Sliding-in Turret Phase Contrast Condenser	○	○
	NA0.7-0.9 Dark-field Condenser (Dry), used for objectives lower than 100X	○	○
	NA1.3-1.26 Dark-field Condenser (Oil), used for 100X objective	○	○
Transmitted Illumination	3W S-LED lamp, center pre-set, intensity adjustable; LCD screen displays magnification, time sleeping, brightness and lock, color temperature adjustable	●	●
LED Fluorescent Attachment	LED fluorescent attachment with LED illumination, 4-position fluorescent turret, with iris diaphragm, B,G,U,R fluorescent filters are available	○	○
Mercury Fluorescent Attachment	Turret with 6 filter block cubes position, with iris field diaphragm and aperture diaphragm, central adjustable; with filter slot; with B, G, U fluorescence filters (B, G, U, V, R, FITC, DAPI, TRITC, Auramine, Texas Red and mCherry fluorescent filters are available).	○	○
	100W mercury lamp house, filament center and focus adjustable; with reflected mirror, mirror center and focus adjustable.	○	○
	Digital power controller, wide voltage 100-240VAC	○	○
	ND6/ND25 Filter	○	○
Focusing	Low-position coaxial coarse and fine focusing, fine division 1μm, Moving range 28mm	●	●
Stage	Double Layer Rackless Stage 235x150mm, moving range 78x54mm, hard oxidized plate; can be upgraded to tempered glass stage or sapphire stage, precision: 0.1mm	●	●
DIC Kit (Should work with Semi-APO objectives)	10X, 20X/40X, 100X Warrior Prism (works in the DIC Turret Condenser)	○	○
	Polarizer for DIC Kit	○	○
	10X-20X DIC insert plate (can be inserted into the DIC slot on nosepiece)	○	○
	40X-100X DIC insert plate (can be inserted into the DIC slot on nosepiece)	○	○
	DIC Turret Condenser	○	○
Other Accessories	0.5X C-mount Adapter	○	○
	1X C-mount Adapter	○	○
	Dust Cover	●	●
	Power Cord	●	●
	Cedar Oil 5ml	●	●
	Simple Polarizing kit	○	○
	Calibration slide 0.01mm	○	○
	Multi Viewing Attachment for 2/3/5/7/10 person	○	○

Note: ● Standard Outfit, ○ Optional

## System Diagram

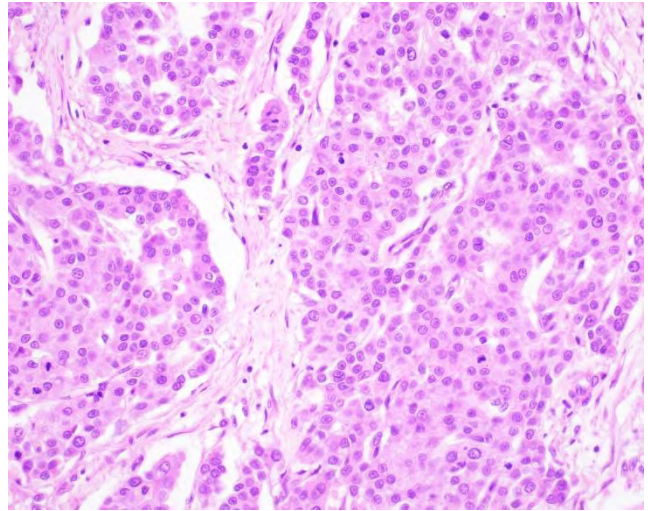
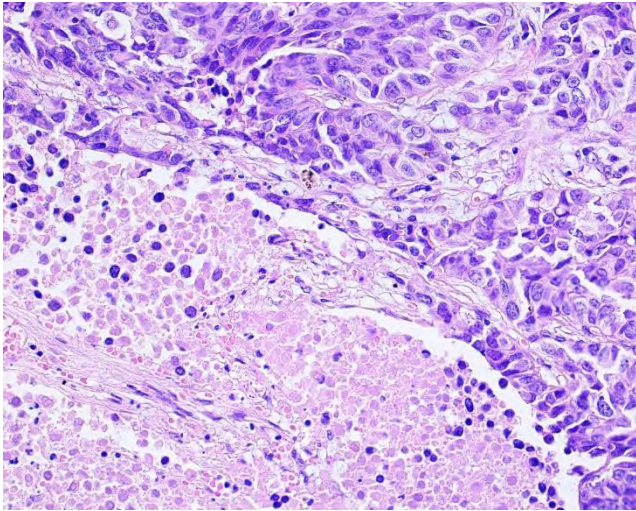


## Dimension



Unit: mm

Sample Image



**BS-2078 Series Biological Microscope**

BS-2078B

**Introduction**

BS-2078 series microscopes are high level microscopes which are specially designed for college education, medical and laboratory study. It adopts an Infinite optical system, beautiful structure and ergonomic design. With modular design, it can be equipped with various accessories to meet different needs. With an innovative optical and structure design, excellent optical performance and easy to operate system, these biological microscopes make your works enjoyable.

**Feature****1. Stage**

280mm\*160mm rackless integrated large size mechanical stage, travel range 80\*52mm.

## 2. Coaxial coarse and fine focusing



Coaxial coarse and fine focusing system (scale 1 $\mu$ m) with focusing upper limiting device. Coarse stroke 30mm.

## 3. Management System



Only available for LED illumination. With the LCD display, it shows logo when power on and the shows current magnification of objective. It can show working brightness and has current brightness memory. It supports working time setting, LED color temperature adjustable within 3500K-6000K, brightness adjustment automatically upon different objectives.

## 4. Brand new Koehler illumination system

Brand new Koehler illumination system ensures excellent optical performance.



5W LED Illumination



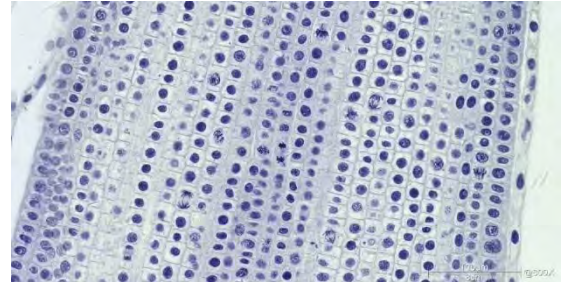
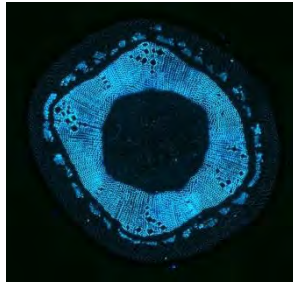
50W/100W Halogen Illumination

## Application

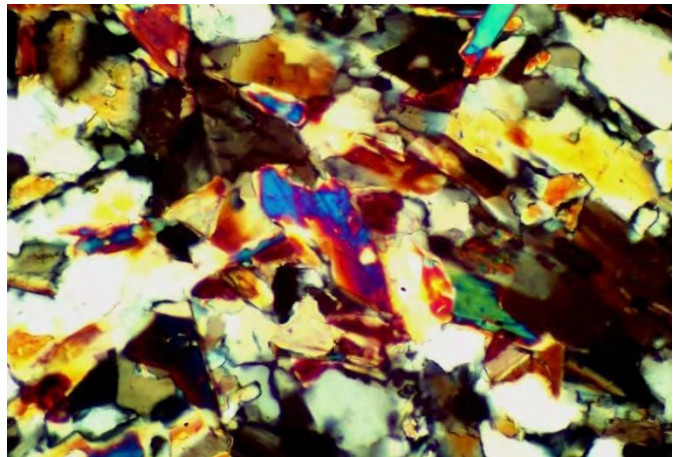
### 1. Bright observation



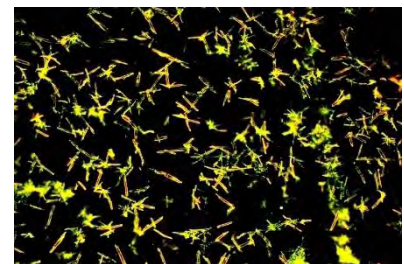
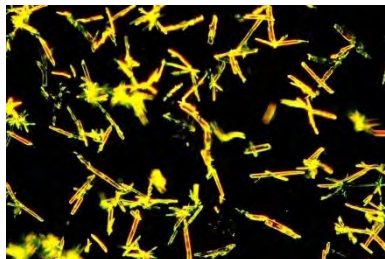
Swing-out condenser



### 2. Polarizing observation



### 3. Dark field observation



### 4. Phase contrast observation



Qunituple turret phase contrast unit 10X/20X/40X/100X

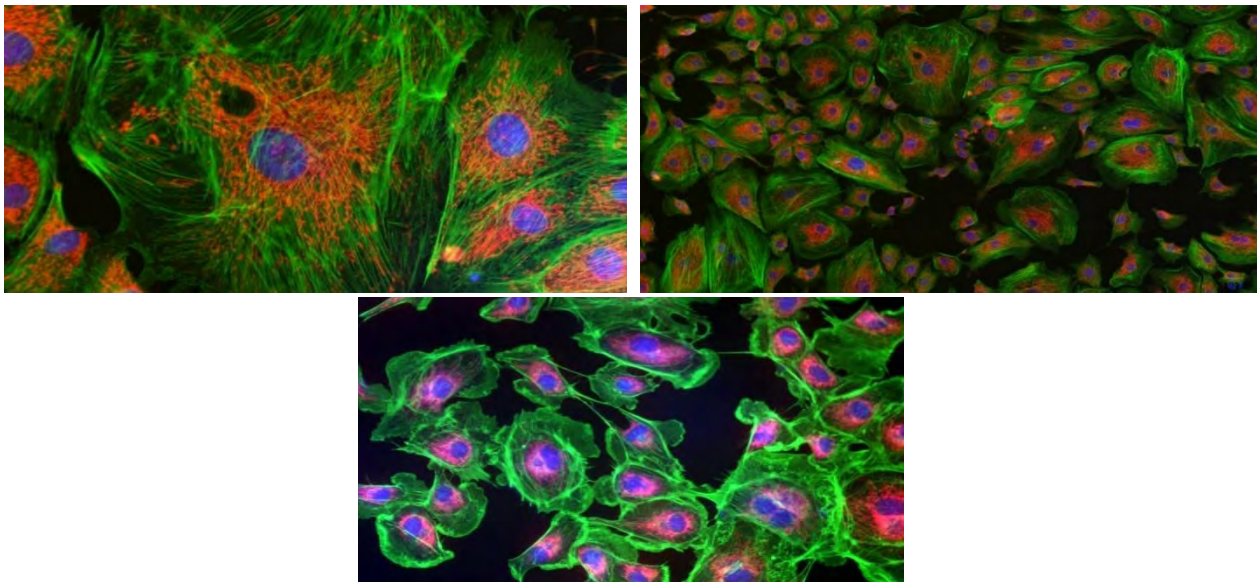
5. Fluorescence observation



Integrated EPI LED fluorescence device



BS-2078BF



Specification

Item	Specification	BS-2078A	BS-2078B
Optical System	Color Corrected Infinite Optical System	•	•
Viewing Head	Inclined 30° trinocular tube, rotatable 360°, interpupillary distance: 48-76mm, splitting ratio: eyepiece: trinocular=100:0 or 20:80	•	

	Inclined 30° trinocular tube, rotatable 360°, interpupillary distance: 48-76mm, splitting ratio: eyepiece: trinocular=100:0 or 20:80 or 0:100		•
Eyepiece	Wide field plan eyepiece WF10X/25mm, with adjustable diopter	•	•
	Wide field plan eyepiece WF10X/23mm, with adjustable diopter	○	○
Infinity Plan Achromatic Objectives	2X/NA=0.06, WD=7.2mm	○	○
	4X/NA=0.11, WD=12.1mm	•	○
	10X/NA=0.25, WD=10.0mm	•	○
	20X/NA=0.45, WD=3.33mm	•	○
	40X (S)/NA=0.7, WD=2.61mm	•	○
	100X (S, Oil)/NA=1.25, WD=0.25mm	•	○
Infinity Plan Semi-Apochromatic Objectives	4X/NA=0.10, WD=16.2mm	○	•
	10X/NA=0.3, WD=9.6mm	○	•
	20X/NA=0.45, WD=2.8mm	○	•
	40X (S)/NA=0.7, WD=0.55mm	○	•
	100X (S, Oil)/NA=1.25, WD=0.21mm	○	•
Nosepiece	Sextuple nosepiece	•	•
Stage	Rackless integrated stage with two slide holders. Stage size: 280mm(X)*160mm(Y), moving range: 80mm*52mm.	•	•
Condenser	Swing-out condenser NA 0.9/0.13	•	•
	Dark field condenser, dry, apply to 4X-40X objective	○	○
	Dark field condenser, wet, apply to 100X objective	○	○
Koehler Illumination	5W LED illumination	•	•
	12V/50W halogen lamp	○	○
	12V/100W halogen lamp	○	○
Polarizing Unit	Analyzer and polarizer	○	○
Phase Contrast Unit	Quintuple hole turret unit with 10X, 20X, 40X, 100X phase contrast objectives	○	○
Fluorescent Attachment	B/G epi fluorescence unit, 5W LED fluorescence lamp	○	○
	B/G/UV/V epi fluorescence unit, 5W LED fluorescence lamp	○	○
Video Adapter	0.35X C-mount adapter, adjustable focus	○	○
	0.5X C-mount adapter, adjustable focus	○	○
	0.75X C-mount adapter, adjustable focus	○	○
	1X C-mount adapter, adjustable focus	○	○
Filter	Frosted glass	•	•
	Blue filter	○	○
	Green filter	○	○
	Yellow filter	○	○
Display	Work status display screen, only for LED illumination. It shows magnification of objectives and working brightness. Brightness memory, working time setting and controlling the color temperature of the LED.	○	○
Packing	1 carton/set, Packing Size: 560mm × 350mm × 520mm,	•	•

	Gross Weight: 20.5 kgs, Net Weight: 15 kgs		
--	--	--	--

Note: ●Standard Outfit, ○Optional

## Accessories

### 1. Objectives



Infinity Semi-Apochromatic Objectives

Items	Objective	NA (mm)	W.D. (mm)
Infinity Semi-Apochromatic Objective (FN25)	PLAN S-APO 4X	0.10	16.20
	PLAN S-APO 10X	0.30	9.60
	PLAN S-APO 20X	0.45	2.80
	PLAN S-APO 40X(S)	0.70	0.55
	PLAN S-APO 100X (S, oil)	1.25	0.21
Infinity Plan Achromatic Objective (FN25)	PLAN 4X	0.11	12.1
	PLAN 10X	0.25	10.0
	PLAN 20X	0.45	3.33
	PLAN 40X (S)	0.70	2.61
	PLAN 100X (S, oil)	1.25	0.25

### 2. Optional Fluorescence

Item	Exciter	Dichroic	Emitter	Noted
FL-B(Blue)	EX450/60	DM505	EM520LP	
FL-G(Green)	EX540/30	DM565	EM590LP	
FL-UV (Ultraviolet)	EX375/28	DM415	EM435LP	
FL-V(Violet)	EX405/30	DM430	EM470LP	
FL-B(Chroma39002)	EX470/40	DM505	EM535/40	EGFP/FITC/Cy2/AlexaFluor 488
FL- G(Chroma39004)	EX530/40	DM565	EM605/55	TRITC/Cy3/TagRFP/AlexaFluor 546
FL-UV (Chroma39000)	EX375/28	DM415	EM460/50	DAPI/Hoechst/AlexaFluor 350
FL- Auramine (Chroma19008)	EX450/50	DM485	EM495LP	For Tuberculosis

3. Viewing head

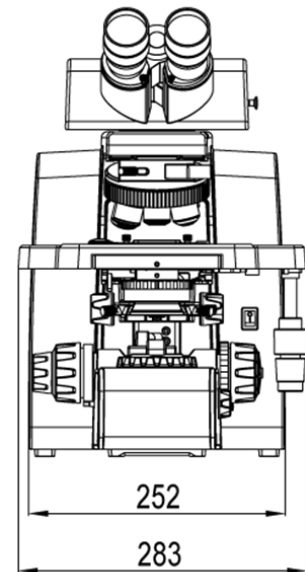
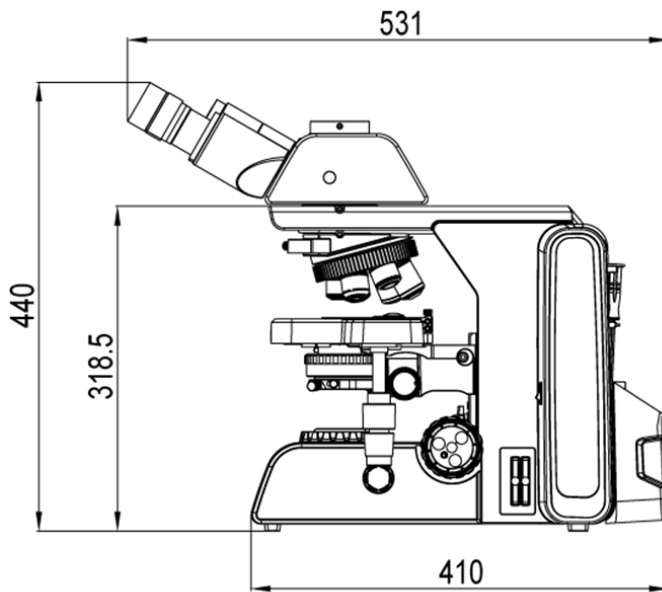


Viewing head with splitting ratio of 100:0 or 20:80 (eyepiece: trinocular) for BS-2078A



Viewing head with splitting ratio of 100:0 or 20:80 or 0:100 (eyepiece: trinocular) for BS-2078B

Dimension



BS-2078A/B

Unit: mm

## System Diagram

