

1. BS-2036F Series (LED) Fluorescence Biological Microscope



BS-2036FB(LED)



BS-2036FT(LED)

Introduction

BS-2036F(LED) Series LED fluorescence microscopes are newly developed microscopes, the microscopes use LED as the light source, the life span of the LED lamp is much longer than mercury lamp, the performance is also better. It has 6 turret positions for filter cubes, more filter cubes can be used without change the blocks.

Features

1. Excellent fluorescence image with infinite optical system.
2. LED illumination with 50,000 hours life span.
3. Convenient to use, no need warm-up.
4. No need for cooling due to LED cold light source.
5. 6 positions for filter cubes.

Application

BS-2036F(LED) series LED Fluorescence microscopes are used to study the absorbing, transportation, chemicals distribution and positioning in cells. They are widely used in disease examination, immune diagnosis and life science areas.

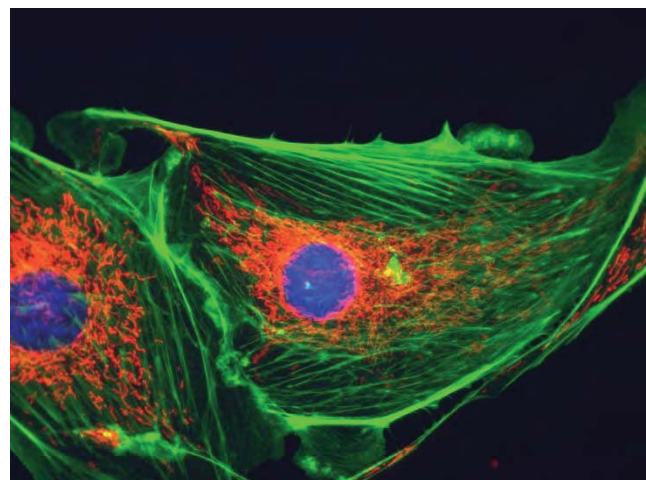
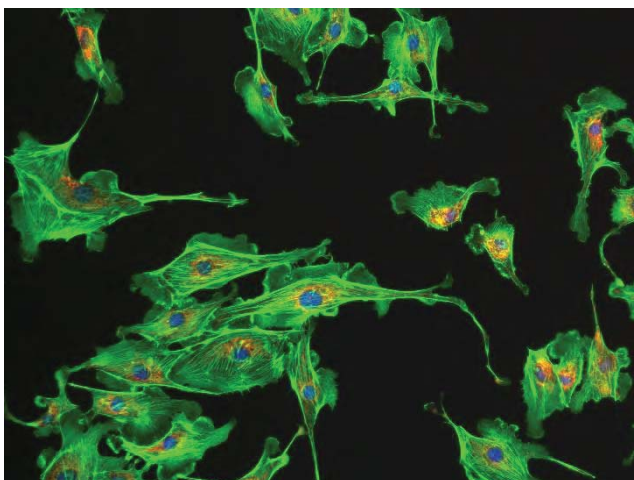
Specifications

Item	Specification	BS-2036 FB(LED)	BS-2036 FT(LED)
Optical System	Infinite Optical System	•	•
Viewing Head	Seidentopf Binocular Viewing Head, Inclined at 30°, 360° Rotatable, Interpupillary 50-75mm	•	
	Seidentopf Trinocular Viewing Head, Inclined at 30°, 360° Rotatable, Interpupillary 50-75mm		•
	Seidentopf Binocular/Trinocular Viewing Head, Inclined at 30°, 360° Rotatable,	○	○

	Interpupillary 48-75mm					
Eyepiece	WF10×/20mm				●	●
	WF16×/13mm				○	○
	Reticule Eyepiece WF10×/20mm (0.1mm)				○	○
Objective	Infinite E-Plan Achromatic Objective 4×, 10×, 40×, 100×(Oil)				●	●
	Infinite Plan Achromatic Objective 4×, 10×, 20×, 40× (S), 60× (S), 100× (Oil) (S)				○	○
Nosepiece	Backward Quadruple Nosepiece				●	●
	Backward Quintuple Nosepiece				○	○
Focusing	Coaxial Coarse & Fine Focusing knobs, Travel Range: 26mm, Scale:2um				●	●
Stage	Stage Size: 145×140mm, Cross Travel 76×52mm, Two Slide Holder				●	●
	Rackless Double Layers Mechanical Stage, Size: 182×140mm, Cross Travel 77×33mm, Two Slide Holder				○	○
Condenser	Abbe Condenser NA1.25 with Iris Diaphragm				●	●
Transmitted Illumination	12V/20W Halogen Lamp, Brightness Adjustable				●	●
	12V/30W Halogen Lamp, Brightness Adjustable				○	○
	3W-LED Illumination Systems (non-rechargeable), Brightness Adjustable				○	○
	0.3W-LED Illumination Systems (Rechargeable), Brightness Adjustable				○	○
Optional Accessories	Field Diaphragm, Photo adapters(for DSLR cameras), Video adapters(1X, 0.5X), Polarization set, Phase contrast kit, filters, mirror, Cable Winding Device				○	○
Reflected Light Source		Excitation	Dichroic Mirror	Barrier Filter		
	Blue excitation	420-490	505	520	●	●
	Green excitation	500-550	575	590	●	●
	Ultraviolet Excitation	330-380	400	435	○	○
	Violet Excitation	380-420	430	460	○	○
Fluorescent Lamp	3W LED Lamp				●	●
Package	42cm*28cm*45cm, 40cm*20cm*40cm, 12kg				●	●

Note: ●Standard Outfit, ○Optional

Sample Images



2. BS-2036F2 Series (LED) Fluorescence Biological Microscope



BS-2036F2B (LED)



BS-2036F2T (LED)

Introduction

BS-2036F2(LED) Series LED fluorescence microscopes are newly developed microscopes, the microscopes use LED as the light source, the life span of the LED lamp is much longer than mercury lamp, the performance is also better. It has 2 positions for filter cubes, the fluorescence light source can be automatically changed after you change the fluorescence filter.

Features

1. Excellent fluorescence image with infinite optical system.
2. LED illumination with 50,000 hours life span.
3. Convenient to use, no need warm-up.
4. No need for cooling due to LED cold light source.
5. 2 positions for filter cubes, compact and take small space.

Application

BS-2036F2(LED) series LED Fluorescence microscopes are used to study the absorbing, transportation, chemicals distribution and positioning in cells. They are widely used in disease examination, immune diagnosis and life science areas in Medical colleges, universities, hospitals and clinics.

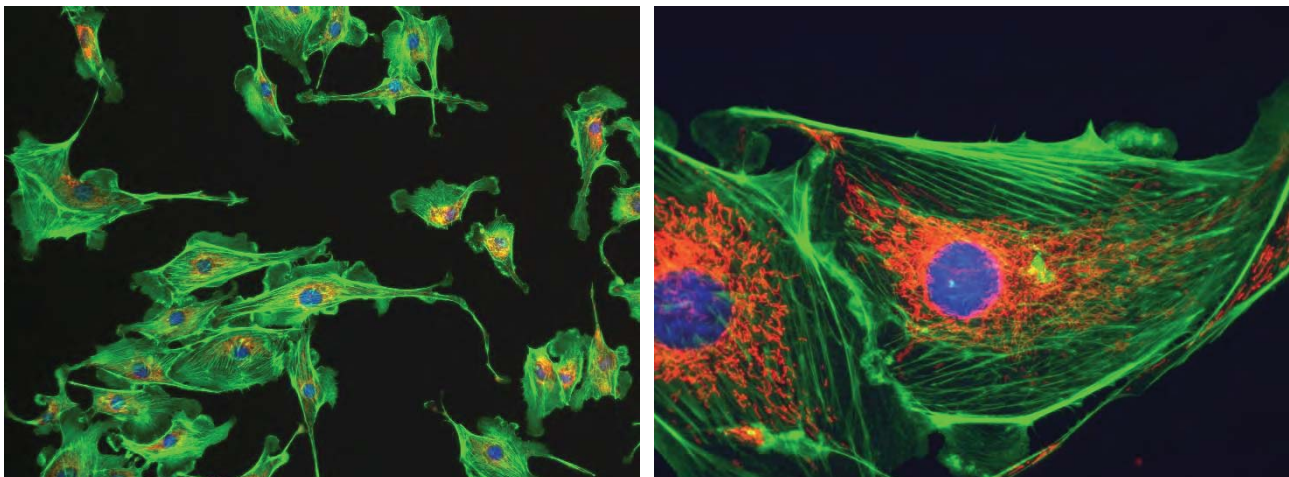
Specifications

Item	Specification	BS-2036 F2B(LED)	BS-2036 F2T(LED)
Optical System	Infinite Optical System	•	•
Viewing Head	Seidentopf Binocular Viewing Head, Inclined at 30°, 360° Rotatable, Interpupillary 48-75mm	•	
	Seidentopf Trinocular Viewing Head, Inclined at 30°, 360° Rotatable, Interpupillary 48-75mm, Light Distribution 20:80		•

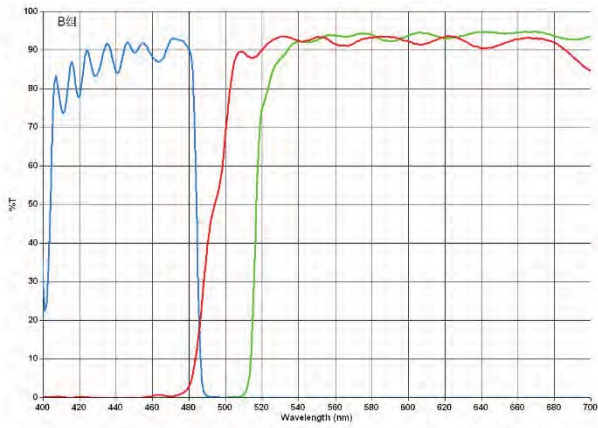
Eyepiece	WF10×/20mm				●	●
	WF16×/13mm				○	○
	Reticule Eyepiece WF10×/20mm (0.1mm)				○	○
Objective	Infinite Plan Achromatic Objective 4×, 10×, 40×, 100×(Oil)				●	●
	Infinite Plan Achromatic Objective 20×, 60× (S), 100× (Dry, S)				○	○
	Infinite UPlan fluorescence objective 10×, 20×, 40×, 100×				○	○
Nosepiece	Backward Quadruple Nosepiece				●	●
	Backward Quintuple Nosepiece				○	○
Focusing	Coaxial Coarse & Fine Focusing knobs, Travel Range: 26mm, Scale:2um				●	●
Stage	Stage Size: 145×140mm, Cross Travel 76×52mm, Scale0.1mm, Two Slide Holder				●	●
	Rackless Double Layers Mechanical Stage, Size: 140×135mm, Cross Travel 75×35mm, Scale0.1mm, Two Slide Holder				○	○
Condenser	Abbe Condenser NA1.25 with Iris Diaphragm				●	●
Transmitted Illumination	3W-LED Illumination, Brightness Adjustable				●	●
	12V/20W Halogen Lamp, Brightness Adjustable				○	○
	12V/30W Halogen Lamp, Brightness Adjustable				○	○
Fluorescence Attachment	Epi fluorescence unit (2 positions for Uv /V/B/G fluorescence filters), 5W-LED fluorescent lamp				●	●
Fluorescence filters		Excitation	Dichroic Mirror	Barrier Filter		
	Blue excitation	420-490	505	520	●	●
	Green excitation	500-550	575	590	●	●
	Ultraviolet Excitation	330-380	400	435	○	○
	Violet Excitation	380-420	430	460	○	○
Filter	Blue /Green /Yellow				○	○
Optional Accessories	Field Diaphragm, Photo adapters(for DSLR cameras), Video adapters(1X, 0.5X), Polarization set, Phase contrast kit, mirror, Cable Winding Device				○	○
Package	42cm*28cm*45cm, 40cm*20cm*40cm, 12kg				●	●

Note: ●Standard Outfit, ○Optional

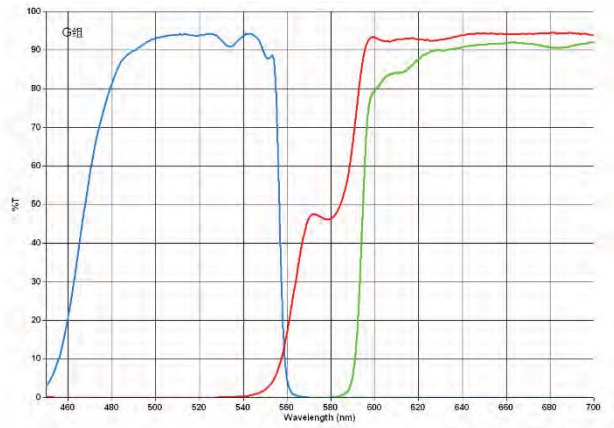
Sample Images



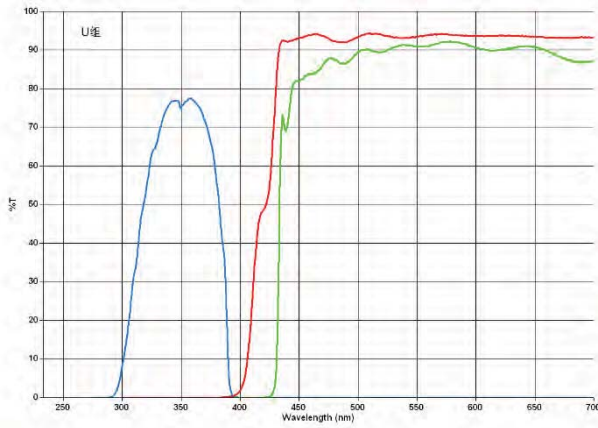
Fluorescence Filters



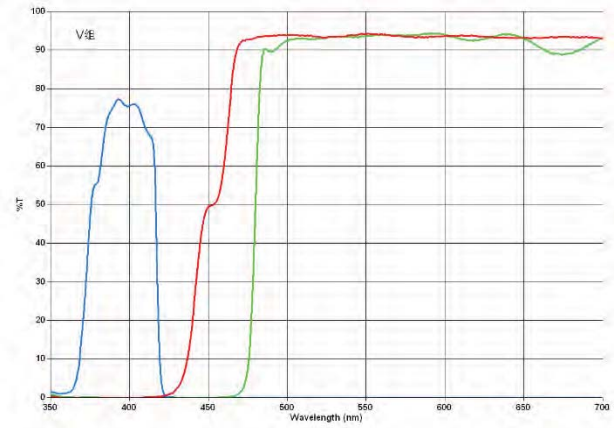
Blue



Green



UV



V