

1. BS-2010D/E/F Biological Microscope



BS-2010D



BS-2010E



BS-2010F

Introduction

BS-2010 series biological microscopes are more comfortable and reliable operation with modern design. These microscopes are economical microscope with all basic features for educational use in elementary and middle school.

Features

1. More comfortable and reliable operation with modern design.
2. Affordable price with reliable performance, long working life.
3. Smart and occupy small space.

Applications

These microscopes are economical microscope with all basic features for educational use in elementary and middle schools.

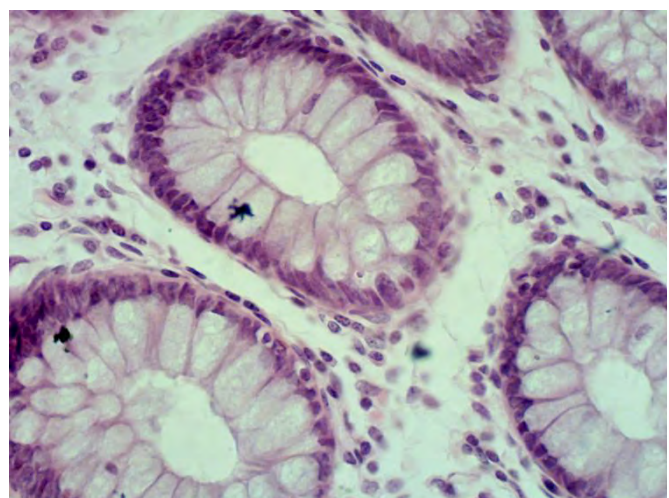
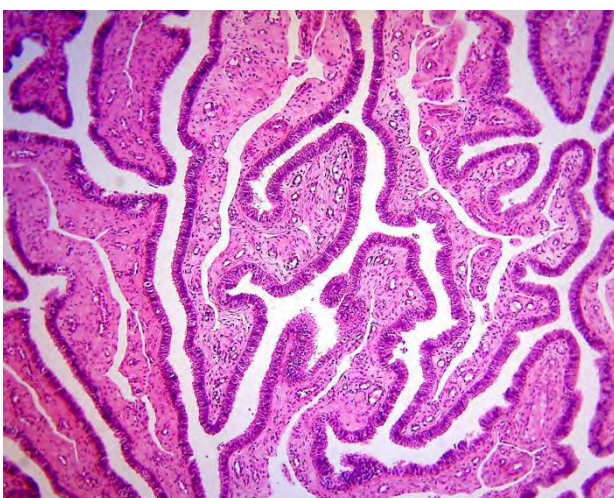
Specifications

| Item | Specification | BS-2010B | BS-2010C | BS-2010D | BS-2010E | BS-2010F |
|--------------|-------------------------------------------------------------------------------------------|----------|----------|----------|----------|----------|
| Viewing Head | Monocular, Inclined at 45°, 360° Rotatable | • | • | • | | |
| | Sliding Binocular Head, Inclined at 45°, 360° Rotatable, interpupillary distance 55-75mm | | | | • | |
| | Sliding Trinocular Head, inclined at 45°, 360° Rotatable, interpupillary distance 55-75mm | | | | | • |

| | | | | | | |
|--------------|--------------------------------------------------------------------------------------------|---|---|---|---|---|
| Eyepiece | WF10×/18mm | ● | ● | ● | ● | ● |
| | WF5×/20mm, WF16×/11mm, WF25×/8mm | ○ | ○ | ○ | ○ | ○ |
| | WF10×/18mm with Pointer | ○ | ○ | ○ | ○ | ○ |
| Nosepiece | Triple Nosepiece | ● | ● | ● | | |
| | Quadruple Nosepiece | | | | ● | ● |
| Objective | Achromatic Objective 4×, 10×, 40×(S) | ● | ● | ● | ● | ● |
| | Achromatic Objective 20×, 60× | ○ | ○ | ○ | ○ | ○ |
| | Achromatic Objective 100× | ○ | ○ | ○ | ● | ● |
| Stage | Plain Stage with Slide Clips 110×120mm | ● | | | | |
| | Plain Stage with Attachable Mechanical ruler 110×120mm/ 60×30mm | | ● | | | |
| | Double Layers Mechanical Stage 110×120mm/ 70×20mm | | | ● | ● | ● |
| Focusing | Coaxial Coarse and Fine Adjustment, Moving Range 10mm | ● | ● | ● | ● | ● |
| Condenser | Single Lens NA 0.65 with Iris Diaphragm | ● | | | | |
| | Abbe NA 1.2 with Iris Diaphragm & Blue Filter, Spiral Adjustment for Condenser | | ● | | | |
| | Abbe NA 1.2 with Iris Diaphragm & Blue Filter, Rack and Pinion Adjustment for Condenser | | | ● | ● | ● |
| Illumination | 1W LED Illumination, Brightness Adjustable | ● | ● | ● | ● | ● |
| | Mirror | ○ | ○ | ○ | ○ | ○ |
| Spare Parts | Dust Cover | ● | ● | ● | ● | ● |
| Package | Styrofoam & Carton, Dimension 28×20×40 cm, 4kg | ● | ● | ● | ● | ● |
| | Wooden Case & Carton, Aluminum Case & Carton | ○ | ○ | ○ | ○ | ○ |
| Power Supply | AC100-220V power adapter, microscope input voltage 5V | ● | ● | ● | ● | ● |

Note: ● Standard Outfit, ○ Optional

Sample Images



2. BS-2010MD/BD Digital Microscope



BS-2010MD



BS-2010BD

Introduction

BS-2010MD/BD digital microscope feature a built-in 1.3MP Digital Camera and professional software offering high resolution and user friendly operation. This combination of microscope, digital imaging system and software is easy to operate and offers outstanding performance. It can preview, take photos, videos and do measurement. LED illumination saves energy and has long working life.

Feature

1. Built-in 1.3 Mega Pixel CMOS camera, vivid images and real color reproduction.
2. High definition images and videos, high frame rate.
3. Professional image analyze software supports Windows Vista / Win 7/8/10 32bit & 64 bit Operation System.
4. Support Multi-language (Arabic, Chinese, English, French, German, Japanese, Polish and etc.).
5. Compact and flexible, ideally suited for desktop, laboratory worktable.

Application

BS-2010MD/BD digital microscopes are primarily designed for school students to do image analysis and distant sharing. The microscopes also provide a superior cost effective solution for computer interactive laboratory, clinical environments and individuals as hobby etc.

Specification

| Item | Specification | BS-2010MD | BS-2010BD |
|---------------|----------------------------------------------------------------------|-----------|-----------|
| Viewing Head | Monocular head, Inclined at 45°, 360° Rotatable | ● | |
| | Binocular head, Inclined at 45°, 360° Rotatable, 55-75mm | | ● |
| Camera System | Resolution: 1280×1024(1.3MP) | ● | ● |
| | Output: USB2.0 | ● | ● |
| | Operation System: Windows 2000/XP/VISTA/Win 7/8/10 | ● | ● |
| | Software: ScopelImage 9.0 | ● | ● |
| Eyepiece | Wide Field Eyepiece: WF10×/18mm | ● | ● |
| | WF5×/20mm, WF16×/11mm, WF25×/8mm | ○ | ○ |
| Objective | Achromatic Objective: 4×, 10×, 40×(S), 100×(S, Oil) | ● | ● |
| | Achromatic Objective: 20×, 60× | ○ | ○ |
| Stage | Double Layers Mechanical Stage: 110×120mm, Moving Range X-Y: 70×20mm | ● | ● |
| Condenser | Abbe NA 1.25 Condenser with Iris Diaphragm (Φ2-Φ28mm) | ● | ● |
| Focusing | Coaxial Coarse and Fine Adjustment, Moving Range 10mm | ● | ● |
| Illumination | 1W LED illumination, brightness adjustable | ● | ● |
| Accessories | Operation manual, dust cover, AC adapter and USB cable | ● | ● |
| Package | 1pc/carton, 28cm×22cm×40cm, 5kg | ● | ● |

Note: ● Standard Outfit, ○ Optional

Sample Image

