

BLM1-380 Digital Microscope



BLM1-380

Introduction

BLM1 series digital microscope features a compact and beautiful exterior design, integrating continuous zoom optical module and high-definition camera. The screen, camera and ring lamp are all powered by one power supply, avoiding the mess of mixed wires. The customers can freely choose with or without a screen according to the needs. Compared with traditional optical microscopes, BLM1 series with display and built-in camera, is easy to observe and operate, also available for digital magnification and data storage. We are committed to providing users with easy and comfortable operating experience by reducing the tiredness caused by long time operations. BLM1-380 is applied to industrial market, with better product reliability.

Feature

1. Larger field of view

BLM1-380 maximizes the theoretical value of the imaging range of the internal optical system. The actual field of view increased by more than 33% compared to BLM1-370, resulting a larger field of view and wider observation range.

2. More reasonable working distance

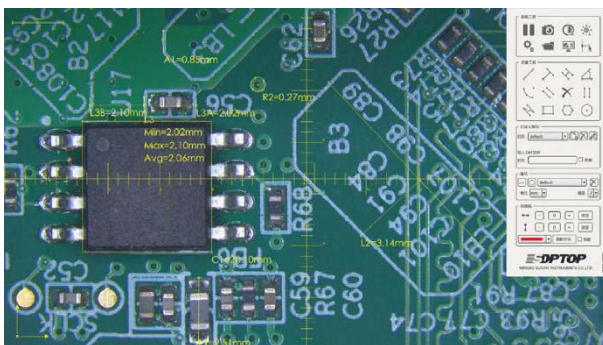
The working distance of 0.5X main objective shortens to 110mm, reducing work tiredness caused by excessive working distance. The users can fully place their elbows on the workbench to optimize the operating feel.

3. High frame digital camera



2.0 mega pixels camera with 12-inch HD display (1920*1080, 60fps), low image noise and high contrast ratio, presents smooth and un-delayed imaging under high resolution.

4. Software



With simple but functional software, BLM1-380 is able to take photos and video, and also available to be upgraded with measuring function if the customers need.

Basic measuring function, can be used to measure length, perimeter, area, angle etc. The line width, color and typeface are able to be personalized. The flat and practical user interface, is easy and effective to be operated.

5. Data Storage

External USB disk (2.0), supporting up to 128G, real-time image storage, meeting the need of storage and recording.



Photograph type

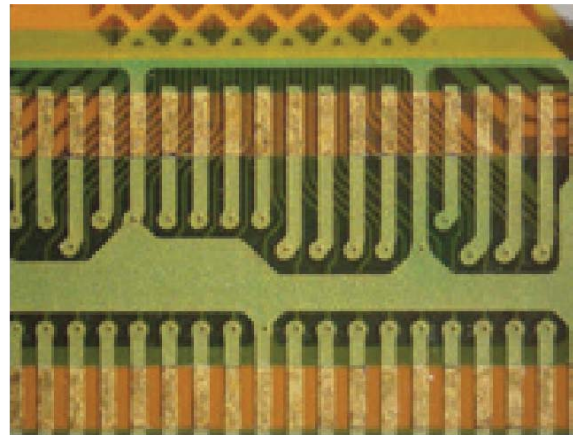


Measure type

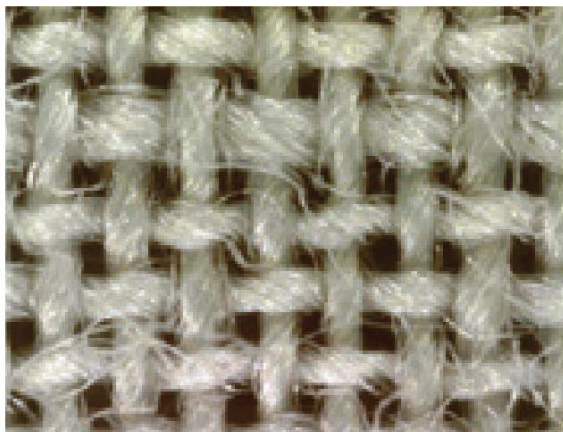
Application



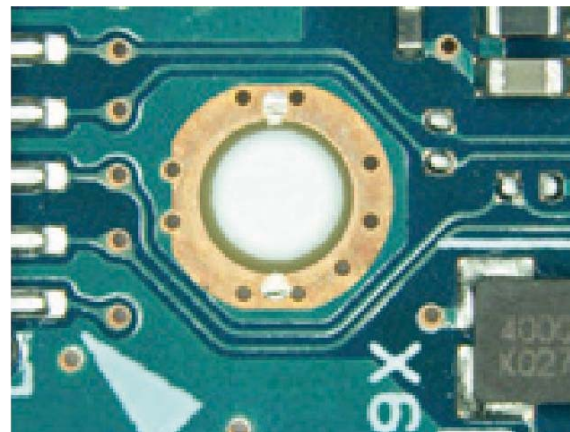
Plant Morphology



FPCB



Fiber



PCB

Specification

Item	Specification	BLM1-380A	BLM1-380B	BLM1-380C	BLM1-380D	
Objectives	Main Objectives					
Microscope Body	Digital lens body set, continuous zoom objective 0.7X-5X. Built-in camera module, sensor size: 1/2 ", COMS 2M, frame rate 60fps, external USB storage (up to 128G), with power indicator light and photography button. Output interface: HDMI, USB2.0, support for wireless mouse	●	●	●	●	
	Digital lens body set, continuous zoom objective 0.7X-5X. Built-in camera module with measuring software, sensor size: 1/2 ", COMS 2M, frame rate 60fps, external USB storage (up to 128G), with power indicator light and photography button. Output interface: HDMI, USB2.0, support for wireless mouse		●			
	Digital lens body set, 12-inch high-definition LCD (-5 ° ~15 ° tilting), resolution 1920X1080, with HDMI interface. Continuous zoom objective 0.7X-5X. Built-in camera module, sensor size: 1/2 ", COMS 2M, frame rate 60fps, external USB storage (up to 128G), with power indicator light and photography button. Output interface: HDMI, USB2.0, support for wireless mouse				●	
	Digital lens body set, 12-inch high-definition LCD (-5 ° ~15 ° tilting), resolution 1920X1080, with HDMI interface. Continuous zoom objective 0.7X-5X. Built-in camera module with measuring software, sensor size: 1/2 ", COMS 2M, frame rate 60fps, external USB storage (up to 128G), with power indicator light and photography button. Output interface: HDMI, USB2.0, support for wireless mouse					●
Illumination	LED ring lamp with 56 bulbs, intensity adjustable, color temperature 5000-5500K	●	●	●	●	
	LED ring lamp with two circles, intensity separately adjustable, color temperature 5000-5500K	○	○	○	○	
Base	Large flat base, lifting range 225mm	●	●	●	●	
	Large flat base, lifting range 225mm. LED with adjustable brightness	○	○	○	○	
Other	12V/3.3A switch power adapter with power switch connection cable	●	●	●	●	
	5m HDMI cable	●	●			

0.2m HDMI cable			●	●
32 GB USB disk	○	○	○	○
Wireless mouse	○	○	○	○
Internal hexagonal Spanner M2	●	●	●	●
Internal hexagonal Spanner M3	●	●	●	●

Note: ● Standard Outfit, ○ Optional

Accessories

1. Main objectives

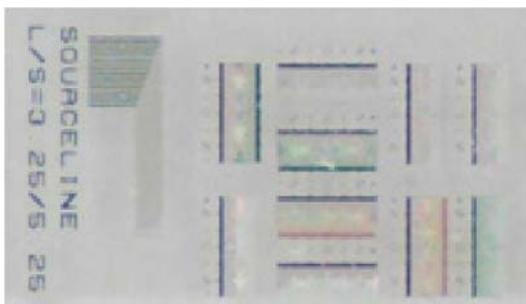


There are different main objectives to expand zoom range, for observing the sample in full-scale or in detail.

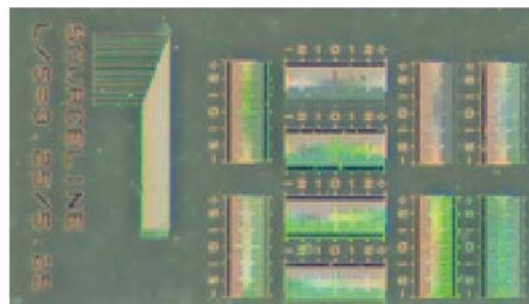
2. LED ring lamp with two circle bulbs



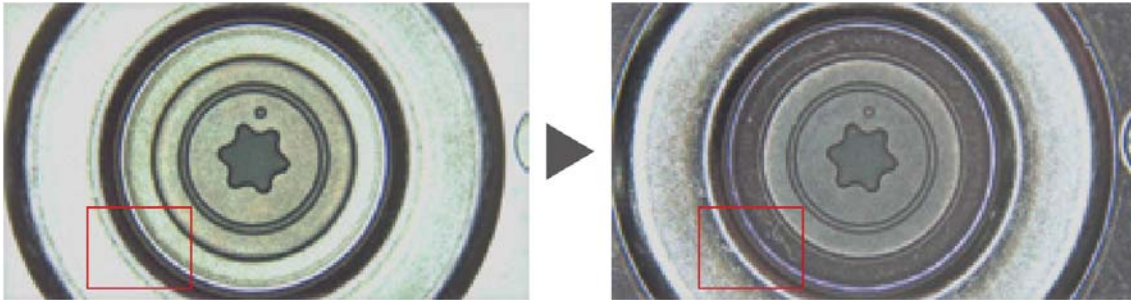
There are separated switches for intensity control of inner and outer circle lamp. Outer circle as oblique illumination, is available to present more details. Inner circle as near coaxial light, improve the accuracy and reproducibility of the image.



Cellphone LCD: under inner light



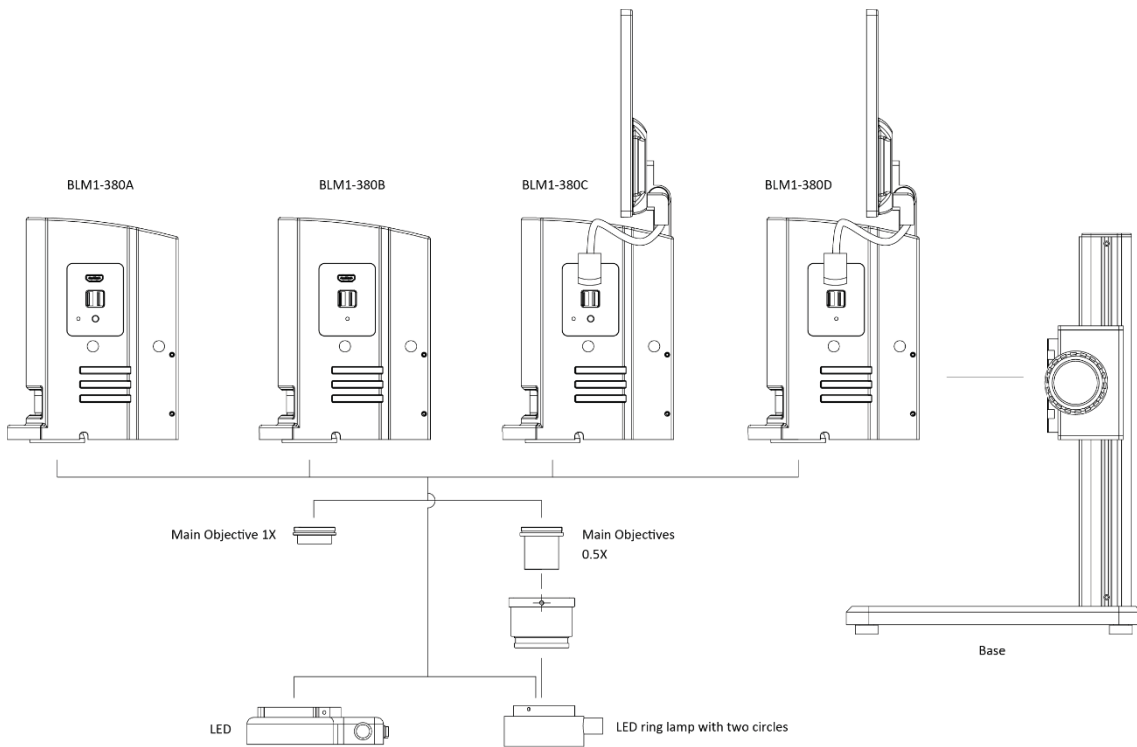
under outer circle light



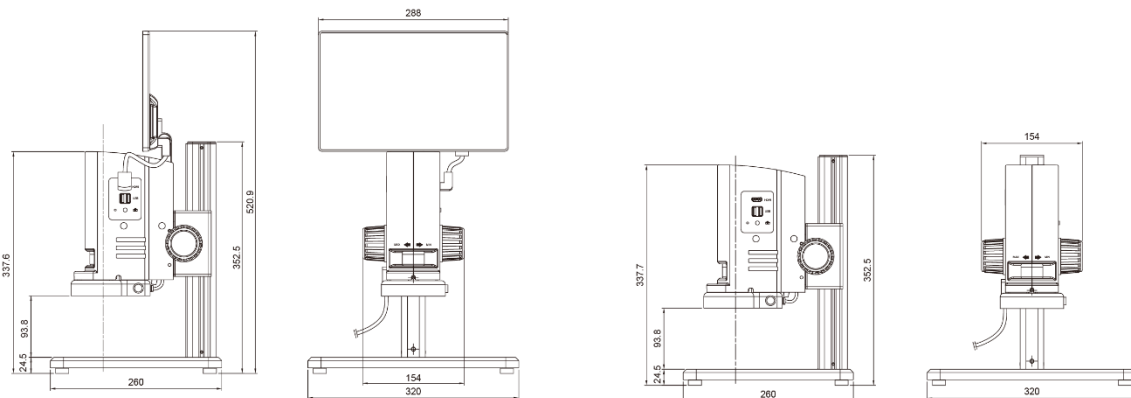
HDD Disc: under outer circle light

under inner circle light

System Diagram



Dimension



Unit: mm