

BLM1-370 Digital Microscope



BLM1-370

## Introduction

BLM1 series digital microscope features a compact and beautiful exterior design, integrating continuous zoom optical module and high-definition camera. The screen, camera and ring lamp are all powered by one power supply, avoiding the mess of mixed wires. The customers can freely choose with or without a screen according to the needs. Compared with traditional optical microscopes, BLM1 series with display and built-in camera, is easy to observe and operate, also available for digital magnification and data storage. We are committed to providing users with easy and comfortable operating experience by reducing the tiredness caused by long time operations. BLM1-370 is applied to educational market, with more available features.

## Feature

### 1. Screen with adjustable tilting angle



The screen tilting angle is adjustable and ergonomic, providing a comfortable observation experience for different users.

### 2. Multiplex signals collection



BLM1-370 with multi-channel signals transmission, support for USB and HDMI output at the same time without interference on each other.

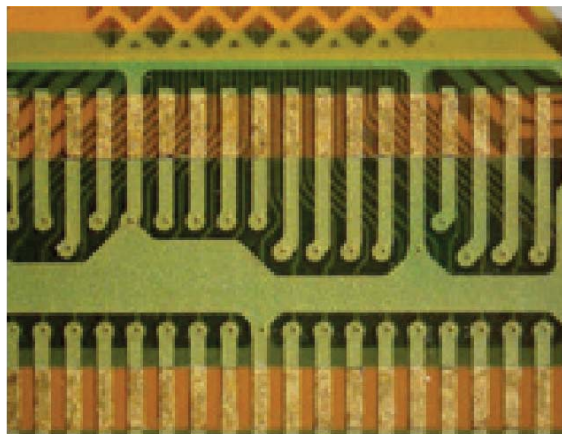
### 3. Adjustable zoom lens

BLM1-370 has a zoom range of 0.7X-5X and 7:1 continuous magnification. The large stroke focusing mechanism provides a wider workspace with a 225mm focusing range and a maximum working distance of 170mm, meeting the measurement needs of samples at different heights.

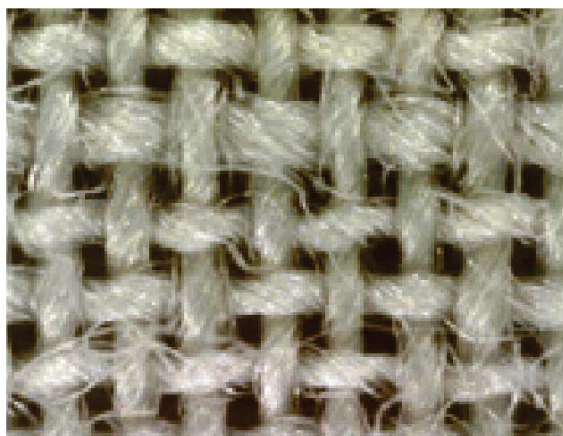
### Application



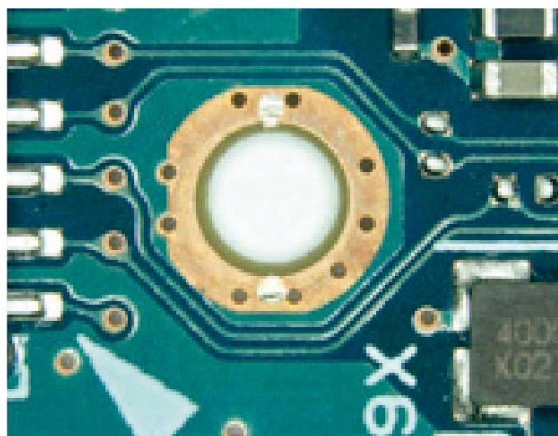
Plant Morphology



FPCB



Fiber



PCB

### Specification

Item	Specification		BLM1-370A	BLM1-370B
Objectives	Main Objectives	1X objective, WD=105mm	●	●
		1.4X objective, WD=100mm (not suitable for LED ring lamp with two circles)	○	○
		0.5X objective, WD=170mm (not suitable for LED ring lamp with two circles)	○	○

Microscope Body	Lens body set, continuous zoom objective 0.7X~5X. Built-in camera module, with real-time HDR and OSD manual, sensor size: 1/3 ", COMS 4M, RAM 16G, support for SD card. Output interface: HDMI, Mini USB	●	
	Lens body set, IPS 10 inch high definition touch screen (-5°~15° tilting). Continuous zoom objective 0.7X~5X. Built-in camera module, with real-time HDR and OSD manual, sensor size: 1/3 ", COMS 4M, RAM 16G, support for SD card. Output interface: HDMI, Mini USB		●
Illumination	LED ring lamp with 56 bulbs, intensity adjustable, color temperature 5000-5500K	●	●
	LED ring lamp with two circles, intensity separately adjustable, color temperature 5000-5500K	○	○
Base	Large flat base, lifting range 225mm	●	●
	Large flat base, lifting range 225mm. LED with adjustable brightness	○	○
Other	12V/3.3A switch power adapter (elbow)	●	●
	5m HDMI cable	○	○
	1.5m USB cable	○	○
	32 GB SD storage card	○	○
	Internal hexagonal Spanner M2	●	●
	Internal hexagonal Spanner M4	●	●

Note: ● Standard Outfit, ○ Optional

## Accessories

### 1. Main objectives

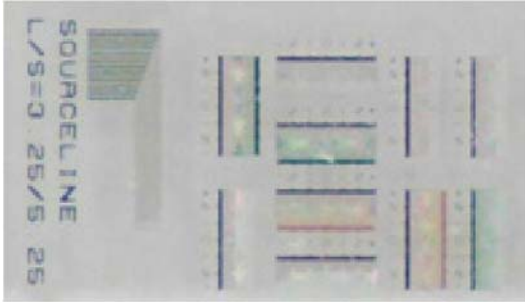


There are different main objectives to expand zoom range, for observing the sample in full-scale or in detail.

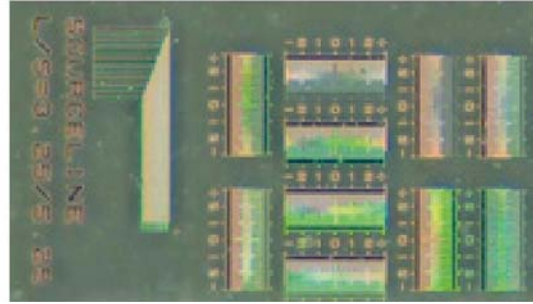
### 2. LED ring lamp with two circle bulbs



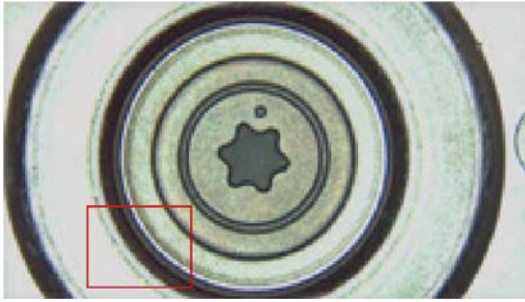
There are separated switches for intensity control of inner and outer circle lamp. Outer circle as oblique illumination, is available to present more details. Inner circle as near coaxial light, improve the accuracy and reproducibility of the image.



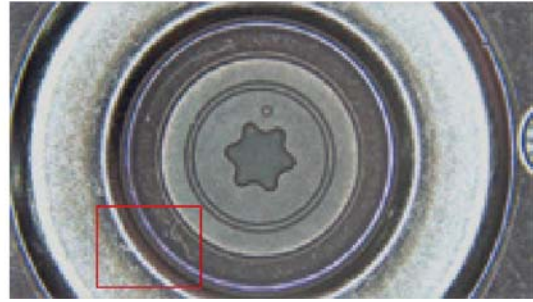
Cellphone LCD: under inner light



under outer circle light

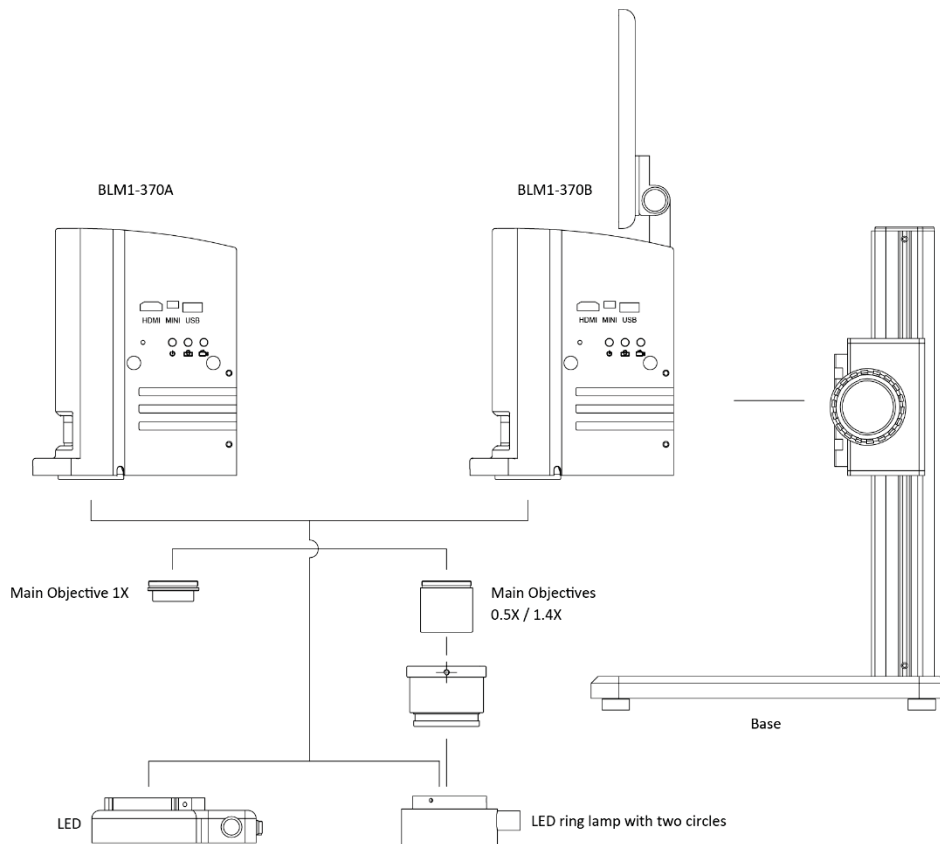


HDD Disc: under outer circle light

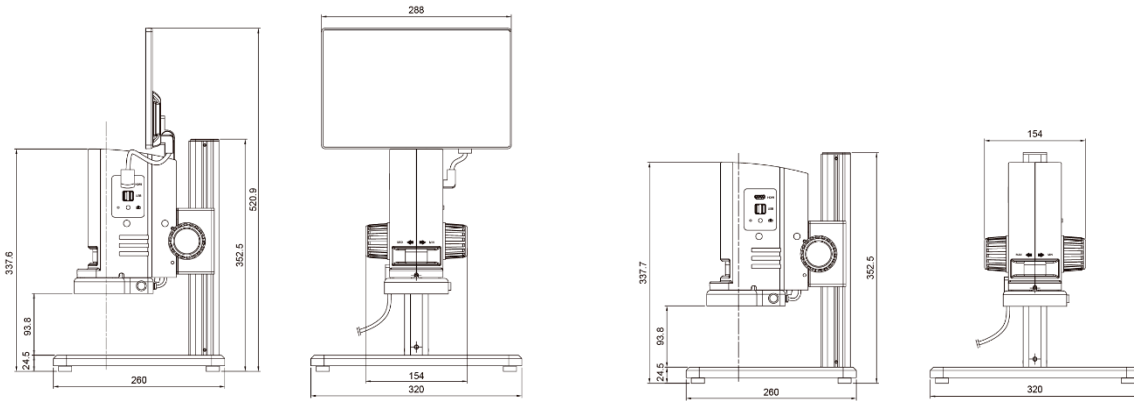


under inner circle light

## System Diagram



Dimension



Unit:mm