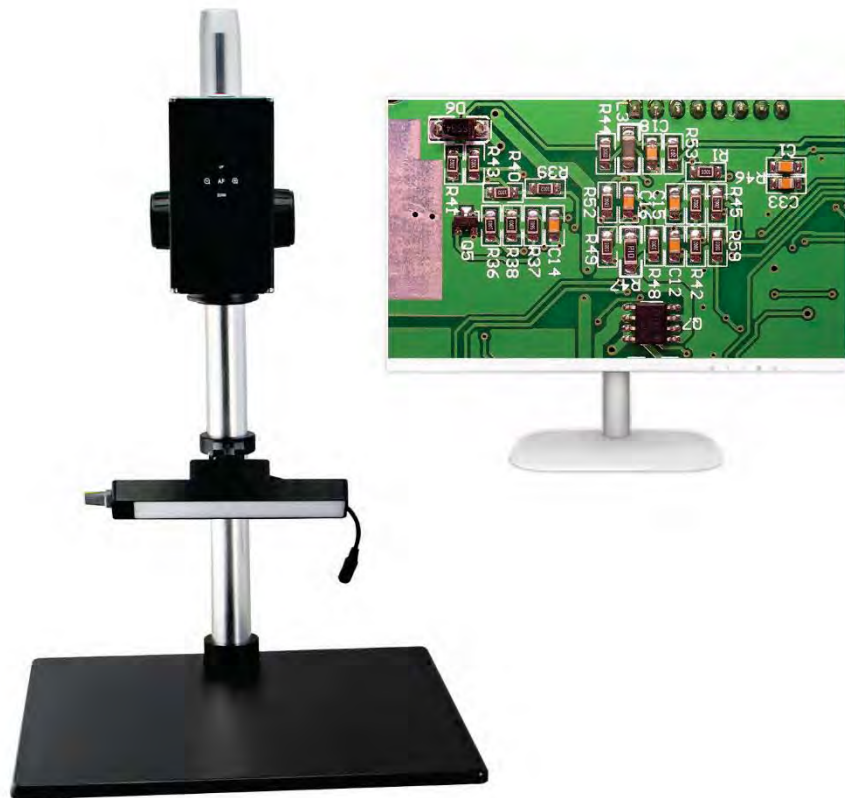


BMM2-1080A Big FOV Auto Focus Microscope

BMM2-1080A with monitor

Introduction

BMM2-1080A Big FOV Auto Focus Microscope adopt auto focus system, focusing accurately, quickly and smoothly. Integrated lens, operated with mouse and pictures can be save on USB disk in real time. A variety bracket and arms for option. This microscope is designed for the applications in the fields of machine vision, industrial inspection and scientific research.

Features**1. Auto focus function**

The auto focus function realizes the variability of working distance, focusing accurately, quickly and conveniently. With built-in auto focus system, fast, accurate and smooth focusing can be achieved.

2. Built-in integrated lens

No additional lens. Built-in integrated lens with a variety of bracket or arm, more flexible application.

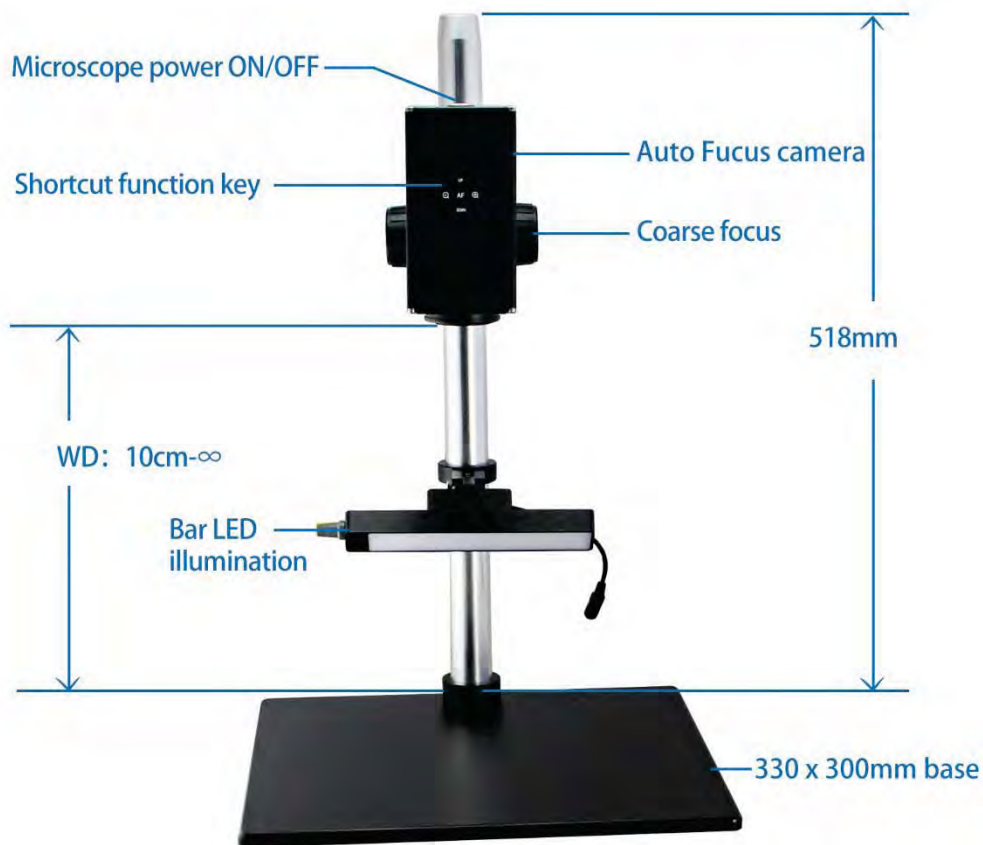
3. USB disk storage function

BMM2-1080A can take photos of the samples and save it on a USB disk in real time.

4. Mouse operation

Mouse operation is convenient and quick.

Product Details








Main Function


Shortcut function key



 Multiple increase shortcut key


 Multiple decrease shortcut key


 Auto focus shortcut key

 Auto white balance shortcut key

 Auto exposure shortcut key

 Photo trigger shortcut key

 Photo browsing shortcut key

 Image freezing shortcut key



Focusing control:

- One key focusing mode
- Auto focusing mode
- Manual focusing mode

Application

BMM2-1080A Big FOV Auto Focus Microscope is widely used in educational demonstration, agriculture research, industrial material, semi-conductor, integrated circuit board inspection area and so on. Widely used in electric equipment, semi-conductor, LCD and LED, for digital image observation, inspection and measurement.

Specification

Item	Specification	BMM2-1080A
Lens Magnification	1X-14X	●
Built-in Camera	1/2.5", resolution :1920*1080, pixel size: 3.24μm, frame rate: 60fps, HDMI output	●
Focusing	Auto Focus	●
Ring Light	BAL-80A LED Ring light, brightness adjustable	○
	BAL-52AP LED polarizing ring light, brightness adjustable	○
	BAL-52ASL LED side ring light, brightness adjustable	○
	BAL-228A Four-zone lighting control separately big area LED ring light	○
	BAL-228AG LED four-zone ring light with frosted glass	○
	BAL-16P LED polarizing ring light, brightness adjustable	○
	BAL-52A LED Ring light, brightness adjustable	○
Back Light	BTL-60A LED back light	○
Point Light	BPL-3A LED point light, 3W, brightness adjustable.	○
	BPL-3MC LED multi color point light, 3W, white, purple, blue, yellow, red, green and mixed light, brightness adjustable	○
	BPL-4A LED point light with numerically adjustable light adapter, 4W, brightness adjustable	○
Bar Light	BBL-5A bar LED illuminator, 60 LED, 12V/5W	●
Cold Light Source	BSL-3B LED light source with dual goose neck light guide, 6.5W	○
	BSL-15A-2 Cold LED light source with Dual Light Guide, 15W LED lamp	○
	BSL2-150A-2 Cold light source with Dual Light Guide, 21V/150W Halogen lamp	○
Stage	BMS-302 X-Y moving stage	○
	BMS-303 X-Y moving stage	○
	BMS-311 X-Y measuring stage	○
	BMS-316A X-Y measuring stage	○
	BMS-316B X-Y measuring stage	○
	BMS-400A large working stage	○
	BMS-260A XY working stage	○

Stand and Focus Arm	Round type column plain stand with coarse focus arm. Height: 518mm.	●
	BA1 Round type column plain stand with coarse focus arm. Stroke: 50mm.	○
	BA2 Round type column plain stand with coarse focus arm, transmitted 12V/5W LED illumination, brightness adjustable. Stroke: 50mm.	○
	BA3 Round type column plain stand with coarse and fine focus arm. Stroke: 67mm, fine precision: 0.002mm.	○
	BA4 Round type column plain stand with coarse and fine focus arm, transmitted 12V/5W LED illumination, brightness adjustable. Stroke: 67mm, fine precision: 0.002mm.	○
	BA5 Square type column plain stand with coarse focus arm. Stroke: 150mm.	○
	BA6 Square type column plain stand with coarse focus arm, transmitted 12V/5W LED illumination, brightness adjustable. Stroke: 150mm.	○
	BA7 Square type column plain stand with coarse and fine focus arm. Stroke: 260mm, fine precision: 0.002mm.	○
	BA8 Square type column plain stand with coarse and fine focus arm, transmitted 12V/5W LED illumination, brightness adjustable. Stroke: 260mm, fine precision: 0.002mm.	○
	BA9 multi-angle column plain stand with coarse focus arm. Stroke: 60mm.	○
	BA10 multi-angle column plain stand with coarse and fine focus arm. Stroke: 60mm, fine precision: 0.002mm.	○
	BA11 universal boom stand with coarse focus arm. Column height: 320mm, horizontal column length: 340mm, Φ 32mm, 360° rotatable. Base size: 330mm*300mm. Stroke: 50mm.	○
	BA12 universal boom stand with coarse and fine focus arm. Column height: 320mm, horizontal column length: 340mm, Φ 32mm, 360° rotatable. Base size: 330mm*300mm. Stroke: 65mm, fine precision: 0.002mm.	○
	BA13 Round type column large plain stand with coarse focus arm. Column height: 320mm, Φ 25mm, stroke: 50mm, base size: 380mm*260mm. Gross weight: 1.5kg.	○
	BFA-1 coarse focus arm. Stroke: 50mm.	○
	BFA-2 coarse and fine focus arm. Stroke: 65mm, fine precision: 0.002mm.	○
	BFA-3 multi-angle coarse focus arm, angle adjustable. Stroke: 50mm.	○
	BFA-4 multi-angle coarse and fine focus arm, angle adjustable. Stroke: 60mm, fine precision: 0.002mm.	○
	BFA-5 electric coarse and fine focus arm, supporting manual focusing and electric focusing. It has 5 preset positions, paired with 5 different magnification objectives. Stroke: 65mm, fine precision: 0.005mm.	○
	BFA-6 N interface coarse focus arm. Stroke: 50mm.	○
BFA-7 N interface coarse and fine focus arm. Stroke: 65mm, fine precision: 0.002mm.	○	

Note: ●Standard Outfit, ○Optional

Optical Parameter

Model	BMM2-1080A
Resolution	1920*1080
Pixel Size	3.24μm
Optical Size	1/2.5"
Color Depth	12:12:12 RGB
Frame Rate	60 fps
Color Adjustment	Manual / Auto
Luminance Adjustment	Manual / Auto
Storage function	Take photo saved with BMP /JPG format, supporting online preview
Lens Magnification	1X-14X
Working distance	100mm-∞
Power Input	DC 12V, 2A
Work Moisture	5%-85%
Work Temperature	0-60°C
Display Interface	HDMI Output
Stand	330*300mm base size, height: 518mm, coarse focus

Optical Magnification	FOV (100mm working distance)	FOV (300mm working distance)
1X	172mm*92mm	460mm*240mm
2X	96mm*50mm	230mm*130mm
5X	53mm*29mm	116mm*60mm
8X	40mm*22mm	74mm*40mm
10X	34mm*19mm	62mm*34m
14X	24mm*14mm	47mm*26mm